

# HSF

Recommended P.C.B Layout (Top Side)  
(PCB BOARD TOLERANCE ±0.05)

**NOTES:**

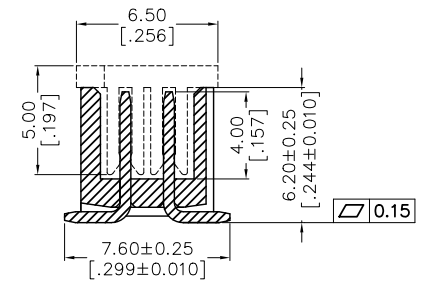
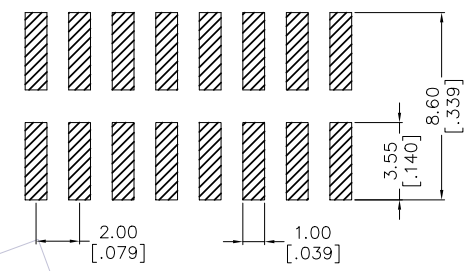
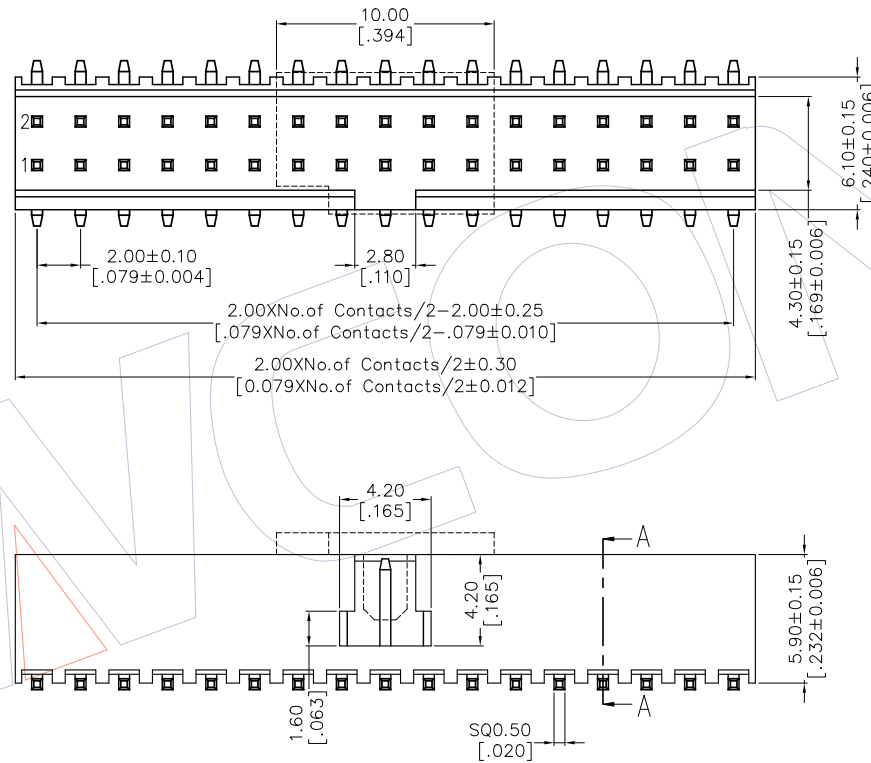
Current Rating: 2.0AMP  
 Contact Resistance: 20mΩ Max  
 Withstand Voltage: 500V AC/DC  
 Insulation Resistance: 1000MΩ Min  
 Operation Temperature: -40℃ to +105℃

Housing Material: PA9T+33%GF Black(UL94V-0)  
 Contact Material: Brass  
 Contact plating: Au or Sn over Ni

## Ordering Information

3122A-XX M XX B K00 X 1

No. of Pins 8-50P	Contact Plating G0=Gold Flash G3=10u"Gold G4=15u"Gold G5=30u"Gold S0=Gold Flash/Tin S3=10u"Gold/Tin S4=15u"Gold/Tin S5=30u"Gold/Tin SN=Tin	Color Insulator B=Black	Packing T=Tube P=Tube+CAP R=Tape&Reel+CAP
----------------------	---	----------------------------	--



		OPERATION		DRAW		DATE		SCALE		PART NO.	
		X.X	±0.40	Liu		2019.08.23		1:1		3122A-XXMXXBK00X1	
		X.XX	±0.25	CHECK		DATE		mm		TITLE:	
		X.XXX	±0.15	APPROVE		DATE		inch		2.00 BOX HEADER SMT	
A0	2019.08.23	NEW						A4		H=5.90 "F" TYPE	
REV	DATE	MODIFICATION DESCRIPTION		CHANGE				SHEET		Customer NO.	
								1/1			
								PROJ.			

# WCON

Http: www.wcon.com

WCON-Dongguan  
 Tel: +86 769 85358920  
 Fax: +86 769 85358915  
 E-mail: sales@wcon.com

WCON-Kunshan  
 Tel: +86 512 57468408  
 Fax: +86 512 57468468  
 E-mail: salesks@wcon.com