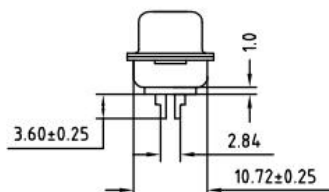
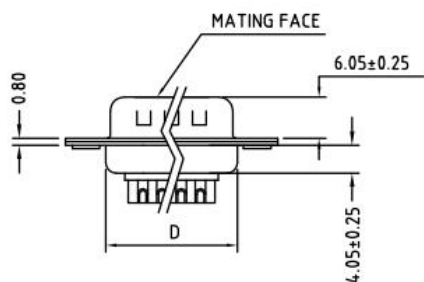
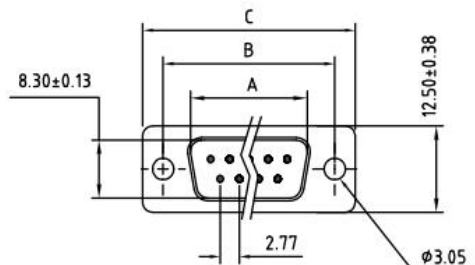


ROHS COMPLIANT

REV.	DESCRIPTION	DATE	ECN NO.
01	NEW DESIGN	2018/06/07	-



No. of Contact	A ±0.25 ±.010	B ±0.13 ±.005	C ±0.38 ±.015	D ±0.25 ±.010
09	16.90	25.00	30.80	19.28
15	25.35	33.30	39.20	27.51
25	39.00	47.04	53.04	41.28
37	55.42	63.50	69.40	57.71

REMARKS:

1. MATERIALS AND FINISH

SHELL : STEEL MATERIAL, FRONT NICKEL FINISHED  
 BACK SHELL TIN FINISHED  
 INSULATOR : PBT THERMOPLASTIC, 30% GLASS  
 FILLED, UL 94V-0 RATED  
 CONTACT MATERIAL : BRASS  
 CONTACT FINISH : FULL GOLD FLASH

2. ELECTRICAL CHARACTERISTICS

CONTACT CURRENT RATING : 5.0 AMPS  
 CONTACT RESISTANCE : 30 MILLIOHMS MAX.  
 DIELECTRIC WITHSTANDING VOLTAGE : 1000 V AC MIN.  
 INSULATION RESISTANCE : 5000 MEGAOHMS MIN.  
 TEMPERATURE RATING : -55°C ~ +105°C

DRAWN:	JEFF.ZHOU	2018.06.07
CHECKED:	CHENG.LIU	2018.06.07
APPROVED:	JINGUO.YANG	2018.06.07
	Sheet 1 of 1	Code 000
Dimensions in mm(inches)		Scale 1:1
TOLERANCE UNLESS SPECIFIED: .XX ± 0.13		Angles:±2°

东莞市赢海电子有限公司

TITLE:  
D-SUB Male Solder Type

REV. 01 Part No: GDM09M-180°