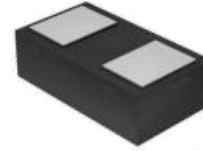
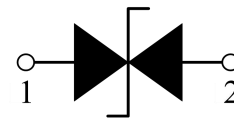


**1. Features**

- Capacitance: 15pF(typ.)
- Reverse Working Voltage: 5V
- IEC 61000-4-2 (ESD Air):  $\pm 25\text{KV}$   
IEC 61000-4-2 (ESD Contact):  $\pm 25\text{KV}$   
IEC 61000-4-5 (Lightning 8/20 $\mu\text{s}$ ): 8A

**2. Pin Description****3. Applications**

- Smart Phone and Tablet PC
- TV and Set Top Box
- Wearable Devices
- PDA

**4. Schematic Diagram****5. Order Information**

Type	Package	Size (mm)	Delivery Form	Delivery Quantity
PESD5V0S1BL	DFN1006	1.00x0.60x0.37	7" T&R	10,000

**6. Limiting Values( $T_A = 25\text{ }^\circ\text{C}$ , unless otherwise specified)**

Symbol	Parameter	Conditions	Min	Max	Unit
$V_{\text{ESD}}$	Electrostatic Discharge Voltage	IEC 61000-4-2; Contact Discharge	-	$\pm 25$	kV
		IEC 61000-4-2; Air Discharge	-	$\pm 25$	kV
$P_{\text{PP}}$	Peak Pulse Power	$t_p = 8/20\ \mu\text{s}$	-	80	W
$I_{\text{PPM}}$	Rated Peak Pulse Current	$t_p = 8/20\ \mu\text{s}$	-	8	A
$T_A$	Ambient Temperature Range	-	-55	125	$^\circ\text{C}$
$T_{\text{stg}}$	Storage Temperature Range	-	-55	150	$^\circ\text{C}$

**7. Electrical Characteristics( $T_A = 25\text{ }^\circ\text{C}$ , unless otherwise specified)**

Symbol	Parameter	Conditions	Min	Typ.	Max	Unit
$V_{\text{RWM}}$	Reverse Working Voltage	$T_A = 25\text{ }^\circ\text{C}$	-	-	5.0	V
$V_{\text{BR}}$	Breakdown Voltage	$I_R = 1\text{mA}$ ; $T_A = 25\text{ }^\circ\text{C}$	5.6	6.5	8.4	V
$I_R$	Reverse Leakage Current	$V_{\text{RWM}} = 5\text{V}$ ; $T_A = 25\text{ }^\circ\text{C}$	-	-	0.1	$\mu\text{A}$
$V_C$	Clamping Voltage	$I_{\text{PP}}=1\text{A}$ , $t_p = 8/20\ \mu\text{s}$	-	-	6	V
		$I_{\text{PP}}=8\text{A}$ , $t_p = 8/20\ \mu\text{s}$	-	-	10	V
$C_J$	Junction Capacitance	$V_R = 0\text{V}$ , $f = 1\text{ MHz}$	-	15	18	pF



### 8. Typical Characteristics

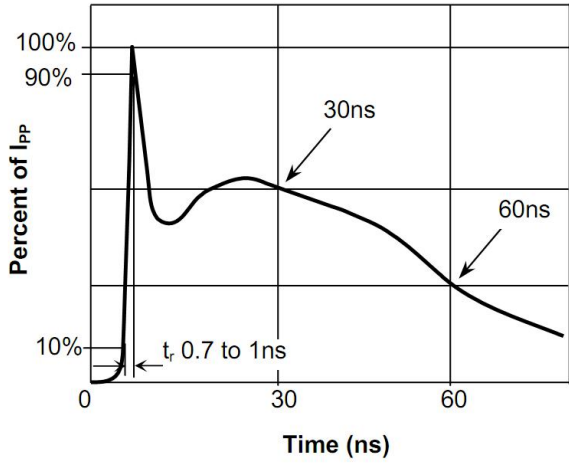


Fig.1 Pulse Waveform-ESD (IEC61000-4-2)

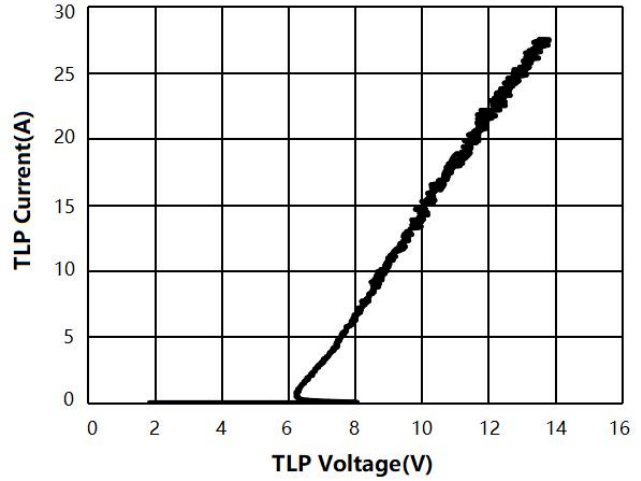


Fig.2 Transmission Line Pulse (TLP)

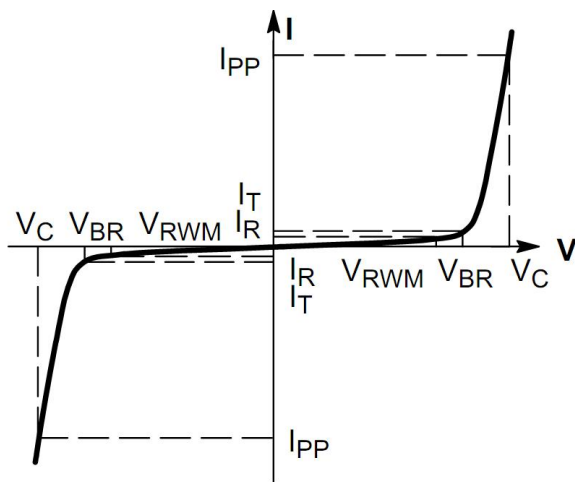


Fig.3 V-I Characteristics for Bidirectional Diode

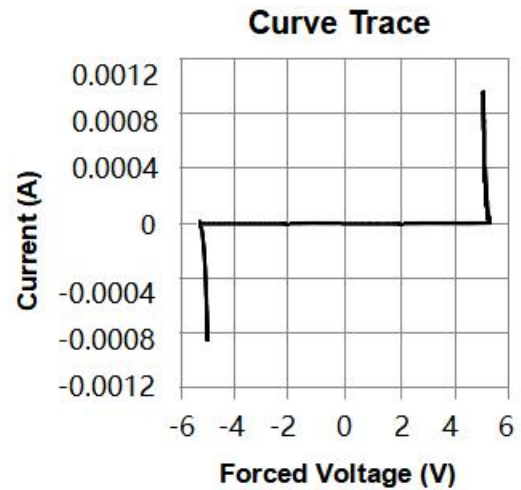


Fig.4 IV Curve

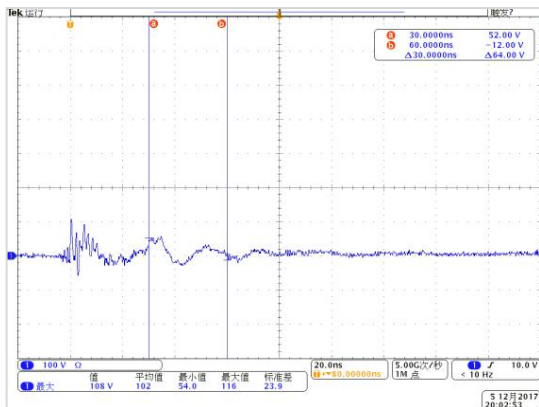


Fig.5 Clamping Voltage at IEC61000-4-2 +8kV Pulse Waveform

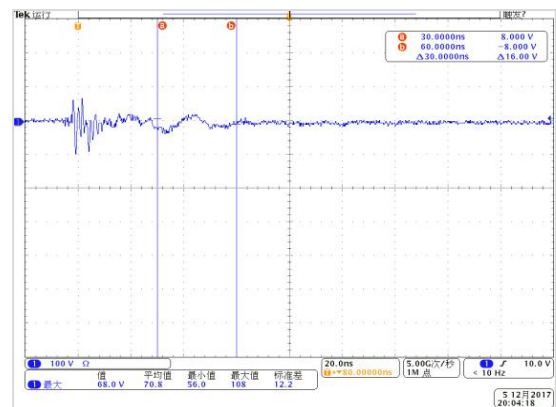
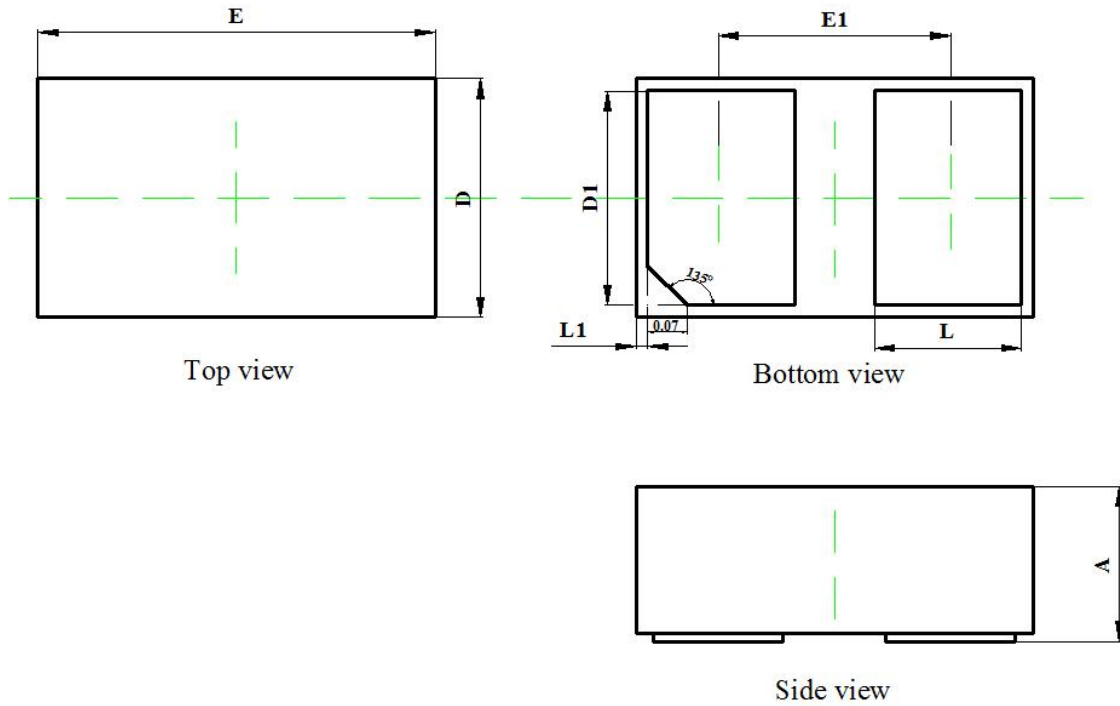


Fig.6 Clamping Voltage at IEC61000-4-2 -8kV Pulse Waveform

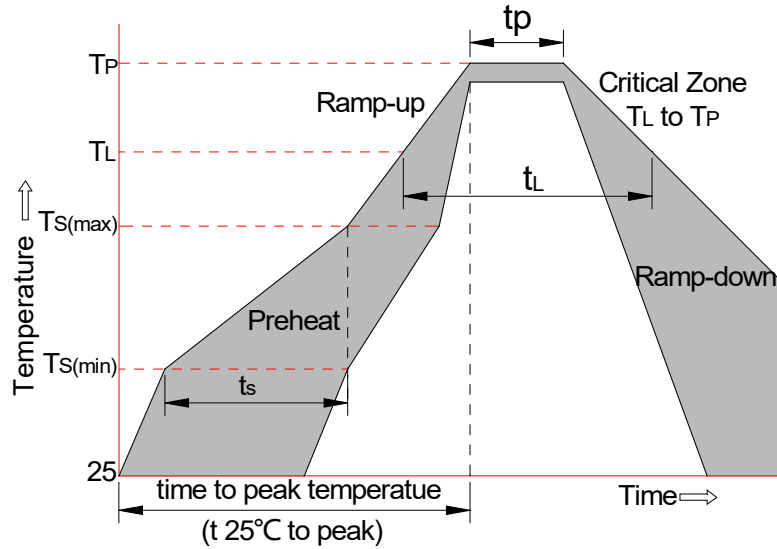


### 9. Package Outline Dimensions

DFN1006 Package Outline



Symbol	Dimensions In Millimeters		Dimensions In Inches	
	Min	Max	Min	Max
A	0.350	0.450	0.014	0.018
D	0.550	0.650	0.022	0.026
E	0.950	1.050	0.037	0.041
D1	0.420	0.520	0.017	0.020
E1	0.550	0.650	0.022	0.026
L	0.270	0.370	0.011	0.015
L1	0.000	0.100	0.000	0.004

**10. Soldering Parameters**

Reflow Condition		Pb-Free Assembly
Pre-heat	-Temperature Min ( $T_{s(min)}$ )	+150°C
	-Temperature Max( $T_{s(max)}$ )	+200°C
	-Time (Min to Max) ( $t_s$ )	60-180 secs.
Average ramp up rate (Liquid us Temp ( $T_L$ ) to peak)		3°C/sec. Max
$T_{s(max)}$ to $T_L$ - Ramp-up Rate		3°C/sec. Max
Reflow	-Temperature( $T_L$ )(Liquid us)	+217°C
	-Temperature( $t_L$ )	60-150 secs.
Peak Temp ( $T_p$ )		+260(+0/-5)°C
Time within 5°C of actual Peak Temp ( $t_p$ )		30 secs. Max
Ramp-down Rate		6°C/sec. Max
xTime 25°C to Peak Temp ( $T_p$ )		8 min. Max
Do not exceed		+260°C



## 11. Contact Information

Online product information is available at [www.wdsemi.com](http://www.wdsemi.com)

Buy our products or get free samples, for further information and requests,

Please e-mail us at: [sales1@wdsemi.com](mailto:sales1@wdsemi.com)

## 12. Copyrights & Disclaimer

Information furnished in this document is believed to be accurate and reliable. However, Jiangsu Weida Semiconductor Co., Ltd assumes no responsibility for the consequences of use without consideration for such information nor use beyond it.

Information mentioned in this document is subject to change without notice, apart from that when an agreement is signed, Jiangsu Weida Semiconductor Co., Ltd complies with the agreement.

Products and information provided in this document have no infringement of patents. Jiangsu Weida Semiconductor Co., Ltd assumes no responsibility for any infringement of other rights of third parties which may result from the use of such products and information.