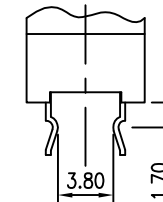
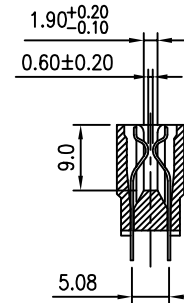


RECOMMENDED PCB LAYOUT
Tolerance: ± 0.05



DETAIL OF KINKED

MATERIAL
INSULATOR: GLASS-REINFORCED THERMOPLASTIC (NY 9T),
UL94V-0 RATED.
CONTACT: COPPER ALLOY.
PLATING: CONTACT AREA- SELECTIVE GOLD OVER NICKEL.
SOLDER AREA- 1u" GOLD OR TIN OVER NICKEL.

ELECTRICAL
DIELECTRIC WITHSTANDING VOLTAGE: 1,000 VAC RMS.
CURRENT RATING: 3 AMP.
INSULATION RESISTANCE: 5,000 MEG. OHMS MIN. AT 500 VDC.
CONTACT RESISTANCE: 20 MILLI OHMS MAX.

MECHANICAL
INSERTION FORCE: 340 GRAMS MAX PER CONTACT PAIR.
WITHDRAWAL FORCE: 28 GRAMS MIN PER CONTACT PAIR.

ENVIRONMENTAL
TEMPERATURE RANGE: -55° TO +85°.

PART NO.

Series No.	SA	98	XX	X	XX	X	Tail Type
SA: Slot 180°							D: No Kink
No Of Pins							02: 2 Pair Kinks
Contact							04: 4 Pair Kinks
B: BRASS+ PBT							06: 6 Pair Kinks
B9: Brass + NY9T							08: 8 Pair Kinks
P9: Phosphor Bronze + NY9T							16: 16 Pair Kinks
Soldertail Plating							Gold Plating
9: 1u" Gold							01: 1u" Gold
L: Lead Free, Bright							10: 10u" Gold
							15: 15u" Gold
							30: 30u" Gold

Pair Of Kinks	Kink Position
4 Pair	A3,A26,A27,C16 & B3,B26,B27,D16
6 Pair	A3,A4,A28,A29,C15,C16 & B3,B4,B28,B29,D15,D16
8 Pair	A2,A3,A24,A25,A28,A29,C16,C17 & B2,B3,B24,B25,B28,B29,D16,D17
16 Pair	A2,A3,A4,A14,A15,A16,A17,A28,A29,A30,A31,C1,C2,C3,C16,C17 & B2,B3,B4,B14,B15,B16,B17,B28,B29,B30,B31,D1,D2,D3,D16,D17

REV	ECN NO.	NAME	DATE	TOLERANCE	
				LINEAR	ANGLES
C	11052	Terry	Jul,07,2011	X.±0.40	X'±
B	11046	Terry	Jun,21,2011	.X±0.30	.X'±
A	07037	Schumi	Jul,04,2007	.XX±0.20	.XX'±
REV	ECN NO.	NAME	DATE	.XXX±0.10	.XXX'±

UMax conn 东莞市友贸实业有限公司 DONGGUAN UMAX ENTERPRISE LIMITED		APPD: Jason	MAT'L:
		CHKD: Schumi	FINISH:
DRWN: Schumi	Q'TY:		

TITLE: CARDEDGE SLOT 98 P, 2.54mm PITCH			
PART NO. SA98XXXXXD			
DWG NO. SA09807002			
	UNITS	SCALE	SHEET
	MM	1 : 1	1 OF 1
	REV	C	
	CUSTOMER		