

NOTES1:

UL Standard

1. Rated voltage/current : 300V / 8A
2. Withstanding voltage : AC1600V/1Min.
3. Insulation Resistance:1000MΩ Min
4. Contact Resistance:20mΩ Max

IEC Standard

1. Pollution degree	2	2	3
Overvoltage category	II	III	III
Rate impulse voltage(KV)	2.5KV	2.5KV	2.5KV
Rate voltage(V)	320V	250V	160V
Rate current(A)	5A		

NOTES2:

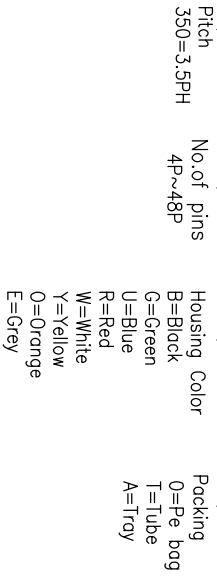
1. Dimension shall be interpreted per ASME Y14.5-2009
2. Pitch : 3.50mm, Poles : N=02~24P
3. Operating temperature: -40°C~+105°C
4. Undimensioned tolerances:

Pitch range in mm	Nominal dimension range					
	Over	Over	Over	Over	Over	Over
6	10	30	60	100	150	0.1/10
TO 6	TO 10	TO 30	TO 60	TO 100	TO 150	<
TO 10	TO 24	TO 30	TO 60	TO 100	TO 150	<

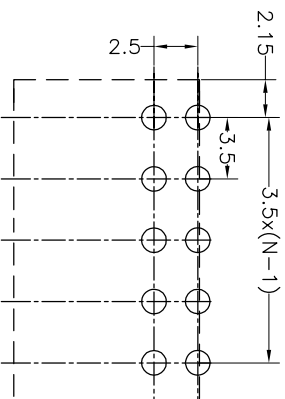
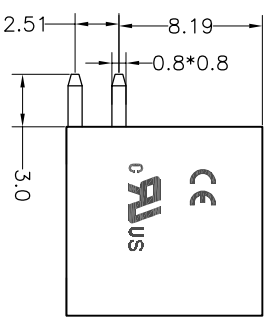
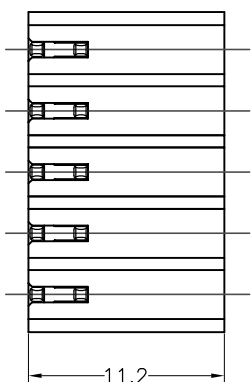
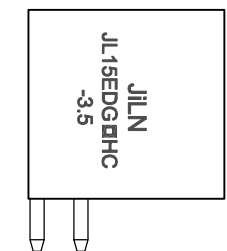
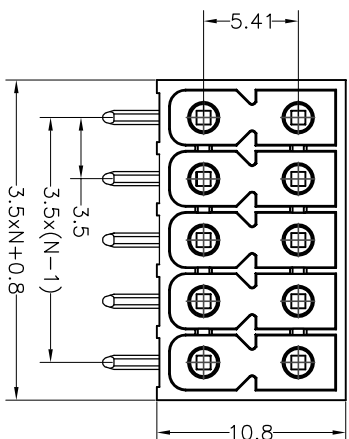
5. RoHS Compliance

# Ordering Information

## JL15EDGRHC - 350 XX B 02



REVISION RECORD				
REV	ECN	DESCRIPTION	DRFT	DATE
A0		NEW		21.11.5



Recommended P.C.B Layout(Top Side)

DRAW	SHUANGPING ZHENG		SCALE	FIT	<b>东莞市锦凌电子有限公司</b> DONGGUAN JINLING ELECTRONIC CO., LTD	
CHECK	LICHAO LIU		UNIT	mm		
APPROVE	YONGLANG GAO		SIZE	A4	PART NO.	
			SHEET	1/1	JL15EDGRHC-350XXB02	
			PROJ.		TITLE:	
					JL15EDGRHC-THR-3.5-2XN插拔式公座/黑色/PC3.0	