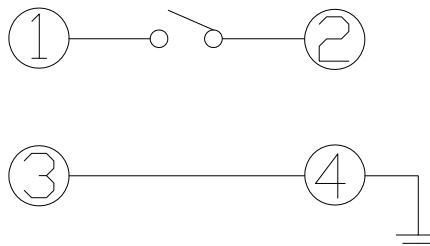


GT-TC183X-HXXX-LX

G-SWITCH

- A=160gf
 - B=250gf
 - C=100gf
 - D=70gf
 - E=130gf
 - F=320gf
 - G=400gf
- L1=100,000 Cycles (A, B)
 L3=300,000 Cycles (A, B, C, D, E)
 L5=500,000 Cycles (A, B, C, D, E)
- H=050 (5.0) A=3.5



CIRCUIT DIAGRAM

注：按键柄为硅胶材质

G-Switch Specification:

Operating temperature range: -30°C to $+85^{\circ}\text{C}$

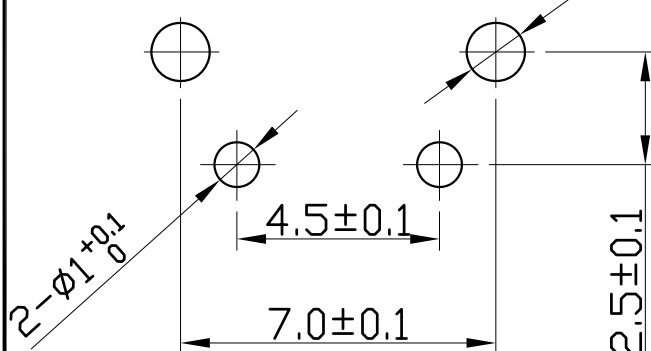
Rating: 50mA. 12V DC

Insulation resistance: $\geq 100\text{M}\Omega$ min. 100V DC

Dielectric strength: 250V AC for 1 min

Contact resistance: $\leq 100\text{m}\Omega$ max.

Travel: $0.25 \pm 0.1\text{mm}$



P.C.B LAND DIMENSION



	G-Switch Electronic Technology CO.,Ltd.		
	DESIGN 陈锋枫 CHECKED APPROVED http://www.dg-switch.com TEL: 0769-82388879	DATE 2016.05.29 DATE DATE	TITLE: GT-TC183X-HXXX-LX REV.: X1 SCALE: 4:1 UNIT: mm SIZE: A4 SHEET: 1/1

1
2
3
4
5

1
2
3
4
5