

Quad TRI-STATE[®] Line Driver

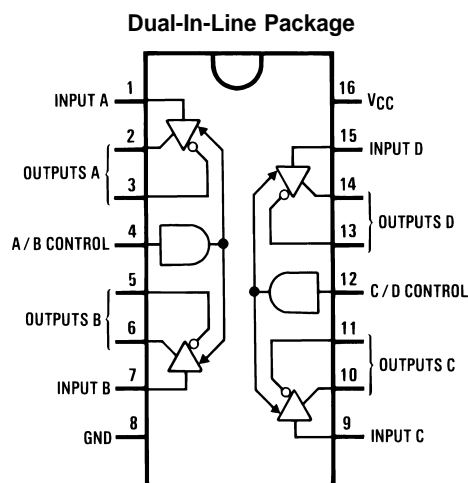
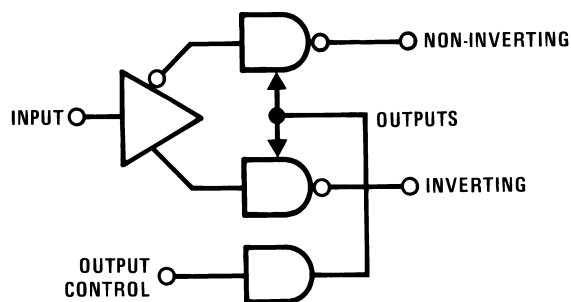
General Description

National's quad RS-422 driver features four independent drivers which comply with EIA Standards for the electrical characteristics of balanced voltage digital interface circuits. The outputs are TRI-STATE structures which are forced to a high impedance state when the appropriate output control pin reaches a logic zero condition. All input pins are PNP buffered to minimize input loading for either logic one or logic zero inputs.

Features

- Four independent drivers
- TRI-STATE[®] outputs
- Fast propagation times (typ 10 ns)
- TTL compatible
- 5V supply
- Output rise and fall times less than 15 ns
- Pin compatible with DS8924 and MC3487

Block and Connection Diagrams



Top View(SOP16/DIP16)
Order Number DS3487M or DS3487N

Truth Table

Input	Control Input	Non-Inverting Output	Inverting Output
H	H	H	L
L	H	L	H
X	L	Z	Z

L = Low logic state
H = High logic state
X = Irrelevant
Z = TRI-STATE(high impedance)

ORDERING INFORMATION

DEVICE	Package Type	MARKING	Packing	Packing Qty
DS3487N	DIP16	DS3487	TUBE	1000/box
DS3487M/TR	SOP16	DS3487	REEL	2500/reel

Absolute Maximum Ratings (Note 2)

Supply Voltage	8V
Input Voltage	5.5V
Storage Temperature	-65°C to +150°C
Maximum Power Dissipation (Note 1) at 25°C	
Molded DIP Package	1476 mW
SO Package	1051 mW
Lead Temperature	
(Soldering, 4 seconds)	260°C

Operating Conditions

	Min	Max	Units
Supply Voltage, V_{CC}			
DS3487	4.75	5.25	V
Temperature (T_A)			
DS3487	0	+70	°C

Note 1: Derate DIP molded package 11.9 mW/°C above 25°C. Derate SOP package 8.41 mW/°C above 25°C.

Electrical Characteristics (Notes 3, 4, 5, 6)

Symbol	Parameter	Conditions	Min	Typ	Max	Units		
V_{IL}	Input Low Voltage				0.8	V		
V_{IH}	Input High Voltage		2.0			V		
I_{IL}	Input Low Current	$V_{IL} = 0.5V$			-200	μA		
I_{IH}	Input High Current				$V_{IH} = 2.7V$	50	μA	
					$V_{IH} = 5.5V$	100	μA	
V_{CL}	Input Clamp Voltage	$I_{CL} = -18\text{ mA}$			-1.5	V		
V_{OL}	Output Low Voltage	$I_{OL} = 48\text{ mA}$			0.5	V		
V_{OH}	Output High Voltage	$I_{OH} = -20\text{ mA}$	2.5			V		
I_{OS}	Output Short-Circuit Current		-40		-140	mA		
I_{OZ}	Output Leakage Current (TRI-STATE)				$V_O = 0.5V$	-100	μA	
					$V_O = 5.5V$	100	μA	
I_{OFF}	Output Leakage Current Power OFF	$V_{CC} = 0V$			$V_O = 6V$	100	μA	
					$V_O = -0.25V$	-100	μA	
$ V_{OS} - \bar{V}_{OS} $	Difference in Output Offset Voltage				0.4	V		
V_T	Differential Output Voltage		2.0			V		
$ V_T - \bar{ V_T }$	Difference in Differential Output Voltage				0.4	V		
I_{CC}	Power Supply Current				Active	50	80	mA
					TRI-STATE®	35	60	mA

Switching Characteristics

$V_{CC} = 5V$, $T_A = 25^\circ C$

Symbol	Parameter	Conditions	Min	Typ	Max	Units
t_{PHL}	Input to Output			10	15	ns
t_{PLH}	Input to Output			10	15	ns
t_{THL}	Differential Fall Time			10	15	ns
t_{TLH}	Differential Rise Time			10	15	ns
t_{PHZ}	Enable to Output	$R_L = 200\Omega$, $C_L = 50\text{ pF}$		17	25	ns
t_{PLZ}	Enable to Output	$R_L = 200\Omega$, $C_L = 50\text{ pF}$		15	25	ns
t_{PZH}	Enable to Output	$R_L = \infty$, $C_L = 50\text{ pF}$, S1 Open		11	25	ns
t_{PZL}	Enable to Output	$R_L = 200\Omega$, $C_L = 50\text{ pF}$, S2 Open		15	25	ns

Note 2: "Absolute Maximum Ratings" are those values beyond which the safety of the device cannot be guaranteed. They are not meant to imply that the devices should be operated at these limits. The table of "Electrical Characteristics" provides conditions for actual device operation.

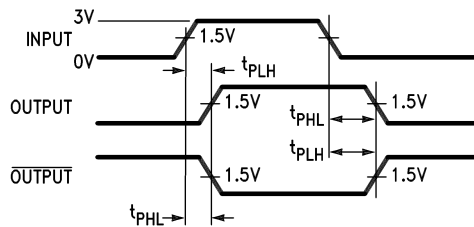
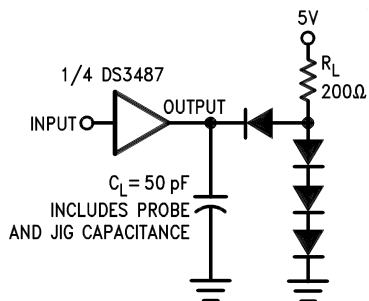
Note 3: Unless otherwise specified min/max limits apply across the 0°C to +70°C range for the DS3487. All typicals are given for $V_{CC} = 5V$ and $T_A = 25^\circ C$.

Note 4: All currents into device pins are positive, all currents out of device pins as negative. All voltages are referenced to ground unless otherwise specified.

Note 5: Only one output at a time should be shorted.

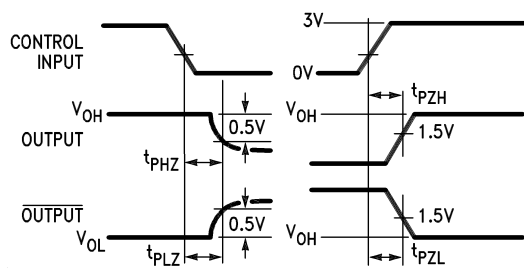
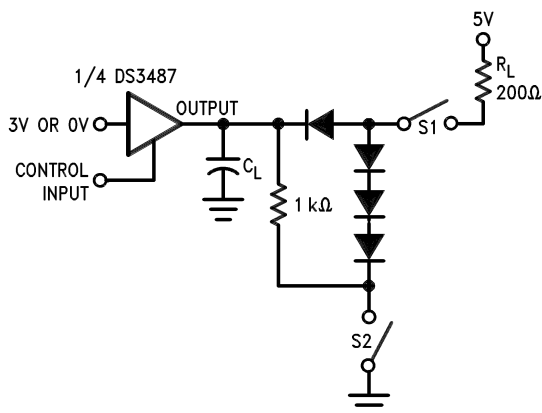
Note 6: Symbols and definitions correspond to EIA RS-422, where applicable.

AC Test Circuits and Switching Time Waveforms



Input pulse: $f = \text{MHz}$, 50%; $t_r = t_f \leq 15 \text{ ns}$.

FIGURE 1. Propagation Delays



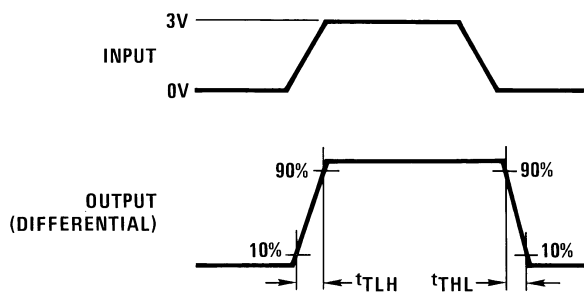
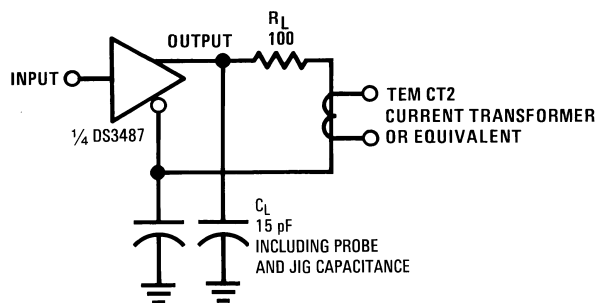
Input pulse: $f = \text{MHz}$, 50%; $t_r = t_f \leq 15 \text{ ns}$.

S1 = open for t_{PZH}

S2 = open for t_{PZL}

S1 and S2 closed except as noted.
 C_L includes probe and jig capacitance.

FIGURE 2. TRI-STATE Enable and Disable Delays

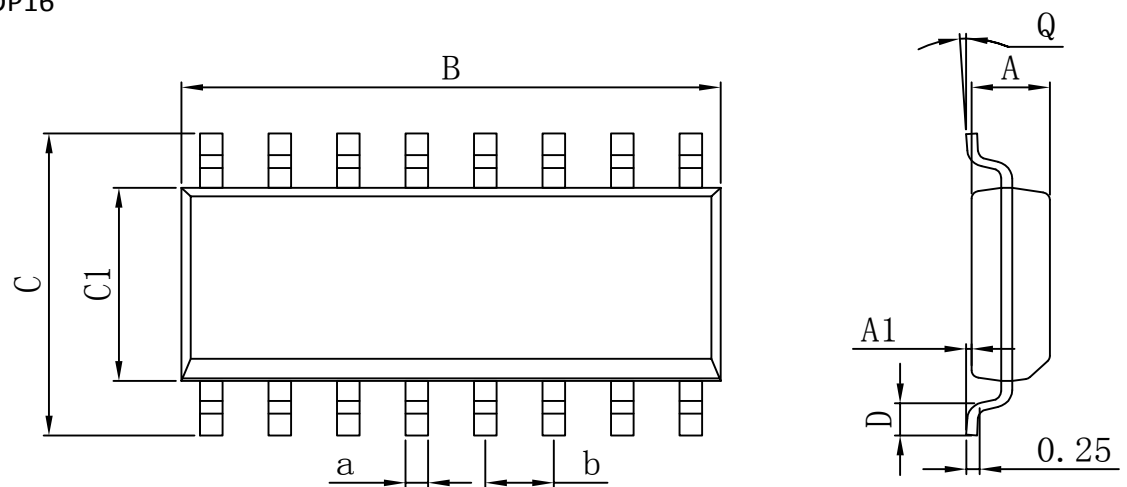


Input pulse: $f = \text{MHz}$, 50%; $t_r = t_f \leq 15 \text{ ns}$.

FIGURE 3. Differential Rise and Fall Times

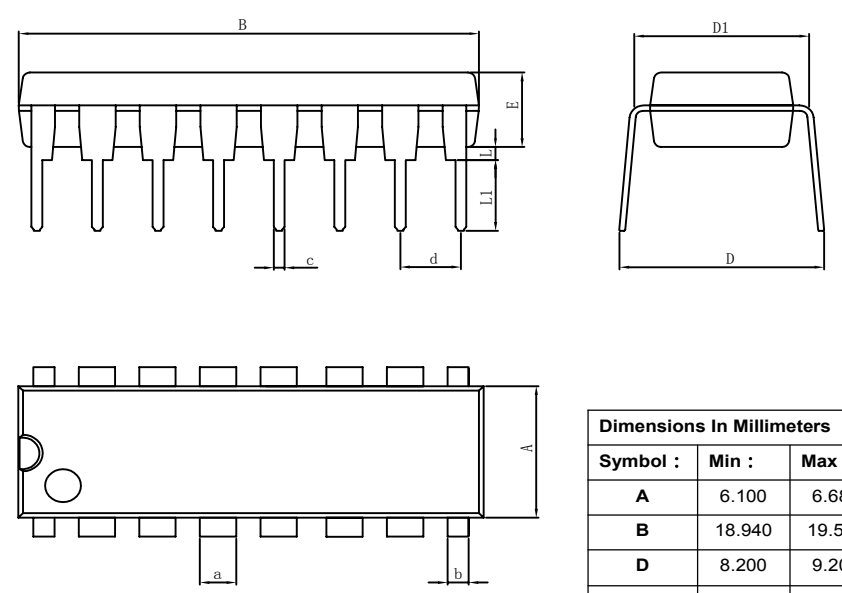
PACKAGE

SOP16



Dimensions In Millimeters					
Symbol :	Min :	Max :	Symbol :	Min :	Max :
A	1.225	1.570	D	0.400	0.950
A1	0.100	0.250	Q	0°	8°
B	9.800	10.00	a	0.420 TYP	
C	5.800	6.250	b	1.270 TYP	
C1	3.800	4.000			

DIP16



Dimensions In Millimeters					
Symbol :	Min :	Max :	Symbol :	Min :	Max :
A	6.100	6.680	L	0.500	0.800
B	18.940	19.560	a	1.524 TYP	
D	8.200	9.200	b	0.889 TYP	
D1	7.42	7.820	c	0.457 TYP	
E	3.100	3.550	d	2.540 TYP	
L	0.500	0.800			

Important statement:

Huaguan Semiconductor Co,Ltd. reserves the right to change the products and services provided without notice. Customers should obtain the latest relevant information before ordering, and verify the timeliness and accuracy of this information.

Customers are responsible for complying with safety standards and taking safety measures when using our products for system design and machine manufacturing to avoid potential risks that may result in personal injury or property damage.

Our products are not licensed for applications in life support, military, aerospace, etc., so we do not bear the consequences of the application of these products in these fields.

Our documentation is only permitted to be copied without any tampering with the content, so we do not accept any responsibility or liability for the altered documents.