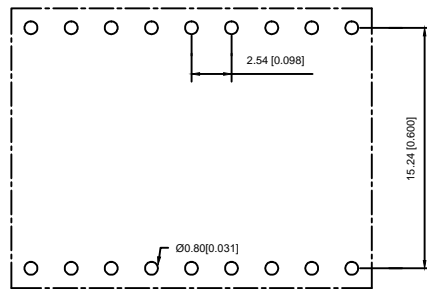
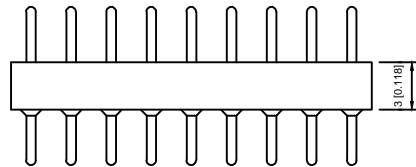
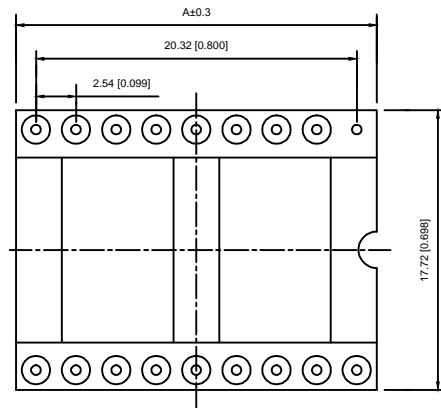
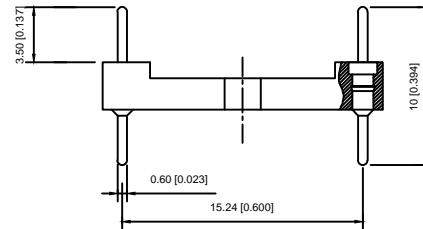


Poles	Dimenslons(mm) A
2*02	5.08
2*03	7.62
2*04	10.16
2*05	12.70
2*06	15.24
2*07	17.78
2*08	20.32
2*09	22.86
2*10	25.40
2*12	30.48
2*14	35.56
2*16	40.64
2*20	50.80
2*21	53.34
2*24	60.96
2*25	63.50



Recommended P.C.B
Layout(±0.05)



Technical Data

Pin(outer sleeve):Brass,machined CuZn38Pb2
 Cllp(Contact 4 Finger):Beryllium copper,heat teated
 Insulator:PPS UL94V-0 colour:black
 Current rating:3Amps
 Maring pin Ø:0.6mm
 Mechanical life:min 500cycles
 Contact resistance:max 10m Ω
 Dielectric strength:min 1000V RMS
 Operating temperature:-40°C to+105°C
 Soldering temperature:+255 °C

X5621W V-2*XX-C1524 D1000

- ① ② ③ ④ ⑤ ⑥

- ① Series.NO.
- ② Category : W-Wafer
- ③ Welding Board Angle : V-Straight 180°
- ④ Row No-Pin No:2*XX-03,04,05,06,07,08,09,10,12,14,16 20,21,24,25
- ⑤ Plastic Height :C=15.24mm
- ⑥ Pin Length :D:1220=12.20mm;42=4.2mm;74=7.40mm;
 7.43=7.43mm;1000=10.0mm;1020=10.20mm;1120=11.20mm;
 1150=11.50mm;1170=11.70;1390=13.90mm;1340=13.40mm
 1370=13.70mm;1420=14.20mm;1520=15.20mm;1620-16.20mm
 1780=17.80mm;1820=18.20mm

X5621WV-2*XX-C1524D1000	PPS 94V-0	Brass	Tin Gold 1u"	X5621F
PART NO	Material	Material(Terminal)	Finish(Terminal)	Mates With XKB Pin Header

DSND	DATE	SCALE: N/A	MODEL TYPE:
DWN	DATE	VIEW:	PART NO.:
CHKD	DATE	UNIT: mm	DWG NO.:
APPD	DATE	SIZE: A4	X5621WV-2*XX-C1524D1000
XKB INDUSTRIAL PRECISION CO.,LIMITED			WEIGHT 1.0g
			SHEET 1/1
			REVISION A0

MARK	DESCRIPTION	DATE	REVISED	APPROVED	UNSPECIFIED TOLERANCES
ΔX					ANGLAR ±5°
ΔX					L ≤ 4 ±0.2
ΔX					4 < L ≤ 16 ±0.3
					16 < L ≤ 63 ±0.4
					L > 63 ±0.5
REVISIONS					UNSPECIFIED TOLERANCES
www.xk-dg.cn www.helloxkb.com www.helloxkb.cn					