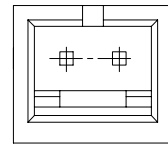
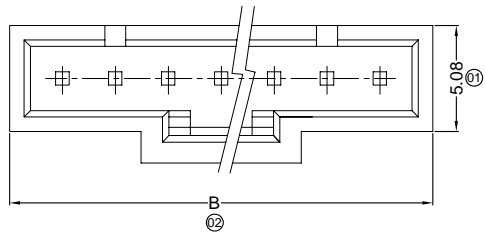
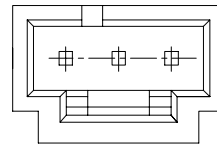


■ Specifications :

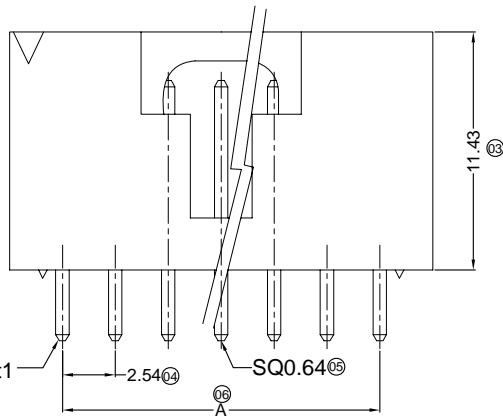
- Voltage rating: 250V AC / DC
- Current rating: 3A AC / DC
- Withstanding voltage: 1500V AC/minute
- Temperature range: -25°C~+85°C
- Insulation resistance: ≥1000MΩ
- Contact resistance: ≤20mΩ
- After environmental testing: ≤30mΩ



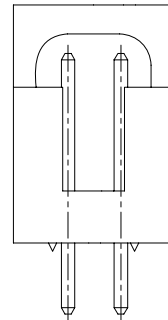
2P



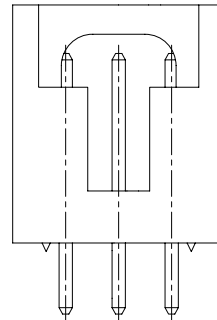
3P



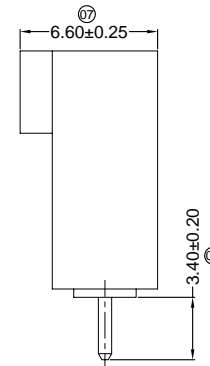
4P-24P



2P



3P

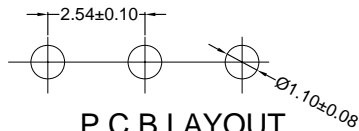


X9556 W V XX- XX X-N0XX XX

(11) (12) (13) (14) (15) (16) (17) (18) (19)

- (11) Series No.
- (12) Category:  
W-wafer
- (13) Welding Board Angle:  
V-180°
- (14) Welding Way:  
Blank-DIP
- (15) Row No.-Pin No.  
XX-Single row
- (16) Special NO.
- (17) Material:  
N0-PA66 94V-0
- (18) Plating Category:  
V\*\* : All Gold-Plated  
\*01-Gold Flash ; \*02-2u" ; \*03-3u" ; \*05-5u"  
\*10-10u" ; \*15-15u" ; \*30-30u" ; \*50-50u"  
SN1-Bright tin plating 70u"  
SN1-Bright tin plating 120u"Min. ;  
SW-Fog Tin plating
- (19) Color:  
Blank-natural color

| Poles | Dimensions (mm) |       |
|-------|-----------------|-------|
|       | A               | B     |
| 2     | 2.54            | 7.62  |
| 3     | 5.08            | 10.16 |
| 4     | 7.62            | 12.70 |
| 5     | 10.16           | 15.24 |
| 6     | 12.70           | 17.78 |
| 7     | 15.24           | 20.32 |
| 8     | 17.78           | 22.86 |
| 9     | 20.32           | 25.40 |
| 10    | 22.86           | 27.94 |
| 11    | 25.40           | 30.48 |
| 12    | 27.94           | 33.02 |
| 13    | 30.48           | 35.56 |
| 14    | 33.02           | 38.10 |
| 15    | 35.56           | 40.64 |
| 16    | 38.10           | 43.18 |
| 17    | 40.64           | 45.72 |
| 18    | 43.18           | 48.26 |
| 19    | 45.72           | 50.80 |
| 20    | 48.26           | 53.34 |
| 21    | 50.80           | 55.88 |
| 22    | 53.34           | 58.42 |
| 23    | 55.88           | 60.96 |
| 24    | 58.42           | 63.50 |



P.C.B LAYOUT

|                  |                   |               |                  |                       |
|------------------|-------------------|---------------|------------------|-----------------------|
| X9556WV-XX-N0V15 | Nylon 66 UL 94V-0 | Brass         | Gold-Plated 15u" | X9556H                |
| X9556WV-XX-N0V01 | Nylon 66 UL 94V-0 | Brass         | Gold-Flash       |                       |
| PART NO          | Material          | Material(Pin) | Finish(Pin)      | Suitable XKB Terminal |

For and on behalf of  
**XKB INDUSTRIAL PRECISION CO., LIMITED**  
 香港星坤工業精密有限公司

|      |             |      |         |          |             |      |
|------|-------------|------|---------|----------|-------------|------|
| △ X  |             |      |         |          | ANGULAR     | ±5°  |
| △ X  |             |      |         |          | L ≤ 4       | ±0.2 |
| △ X  |             |      |         |          | 4 < L ≤ 16  | ±0.3 |
| △ X  |             |      |         |          | 16 < L ≤ 63 | ±0.4 |
| MARK | DESCRIPTION | DATE | REVISED | APPROVED | L > 63      | ±0.5 |

REVISIONS  
 Authorized Signature(s)

|                                       |      |            |                                |
|---------------------------------------|------|------------|--------------------------------|
| DSND                                  | DATE | SCALE: N/A | MODEL TYPE:                    |
| DWN                                   | DATE | VIEW:      | X9556WV-XX-N0XX                |
| CHKD                                  | DATE | UNIT: mm   | 2.54 mm Crimp Style Connectors |
| APPD                                  | DATE | SIZE: A4   | DWG NO.:                       |
| XKB INDUSTRIAL PRECISION CO., LIMITED |      |            | WEIGHT                         |
|                                       |      |            | SHEET                          |
|                                       |      |            | REVISION                       |
|                                       |      |            | 1.0g                           |
|                                       |      |            | 1/1                            |
|                                       |      |            | A0                             |