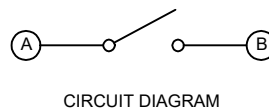
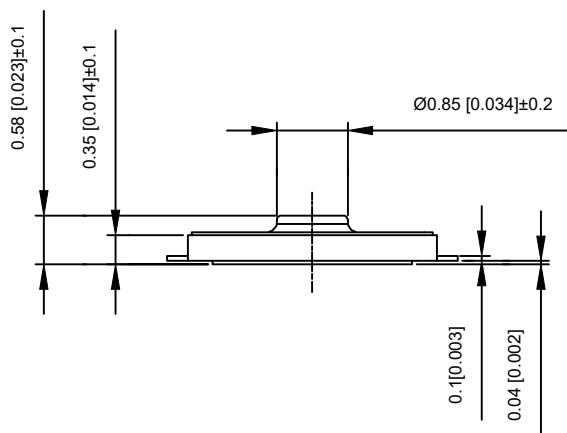


PCB SOLDER LAND DIMENSIONS

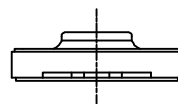
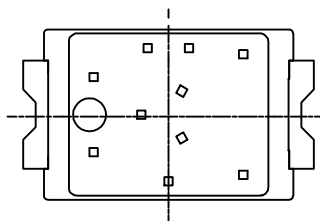
**SPECIFICATION**

Contact Rating: 50mA, 12V DC  
 Contact Resistance: 100mΩ max  
 Insulation Resistance: 100mΩ min. 500V DC  
 Dielectric Strength: 250V AC/1minute  
 Travel: 0.13mm  
 Operating Temp: -30°C ~ +85°C  
 Storage Temp: -30°C ~ +80°C



CIRCUIT DIAGRAM

PAPT NO	TS-2030-2-X
Operating Force	B:160gf C:260gf
Height	H:0.58



ITEM	PAPT NAMF	TER,NO	QTY	MATERIAL	FINISHING	REMARK
⑤	Terminal	—	2	Brass (0.30t)	Plating silvering	—
④	Contact	—	1	F.ag/Sus	Natural	—
③	Base	—	1	Lcp	—	—
②	Cover	—	1	Polyamide	Plating Nickel	—
①	Keystake	—	1	Pet	—	—

REVISIONS					UNSPECIFIED TOLERANCES	DSND	DATE	SCALE: N/A	MODEL TYPE:
ΔX					units: mm	DWN	DATE	VIEW:	TACT SWITCH
ΔX					tolerance: X.X ±0.2mm	CHKD	DATE	UNIT: mm/in	PART NO.:
ΔX					X.XX ±0.1mm	APPD	DATE	SIZE: A4	DWG NO.:
MARK	DESCRIPTION	DATE	REVISED	APPROVED	X.XXX ±0.05mm	KXB INDUSTRIAL PRECISION CO., LIMITED			TS-1105G-X-X-A
www.xk-dg.cn www.helloxkb.com www.helloxkb.cn						WEIGHT	SHEET	REVISION	
						1.0g	1/1	A0	