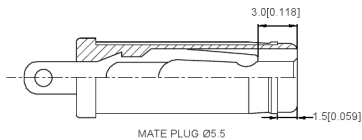
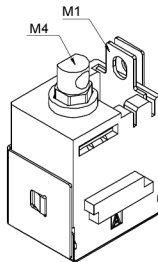


SECTION A-A



MATE PLUG Ø5.5



NOTES:

注释

- 1.CONTACT CURRENT RATING:7A
触点额定电流: 7A
- 2.CONTACT RESISTANCE:50 mΩ MAX
接触电阻: 最大50 mΩ
3. INSULATION RESISTANCE:100MΩ MIN
绝缘电阻: 100MΩ MIN
- 4.DIELECTRIC WITHSTANDING: 500V AC MIN.
耐介质: 至少500V AC.
- 5.DURABILITY:5.000 CYCLES MIN.
耐久性: 至少5.000次循环.
- 6.CONNECTOR MATING FORCES:29.4N(3.00KgF)MAX.;
连接器配合力: 最大29.4N (3.00KgF) 。
- 7.CONNECTOR UNMATING FORCES:2.94N(0.30KgF) MIN
连接器脱离力: 最小2.94N (0.30KgF)

SCHEMATIC	
Model	DC-044AE Ø2.0 mm
Center Pin	Ø2.5 mm

	MATERIAL	PLATING
axis support	Brass	silver
center pin	Brass	silver
plastic	Pbt	
terminal 1	Brass	silver
terminal 2	Phosphor Bronze	silver
terminal 3	Brass	silver

广东星坤科技股份有限公司

生效日期	文件工程章
MARK	DESCRIPTION
REVISIONS	DATE
REVISED	APPROVED
UNSPECIFIED TOLERANCES	

DSND	DATE	SCALE: N/A	MODEL TYPE: DC POWER JACK
DWN	DATE	VIEW:	PART NO.:
CHKD	DATE	UNIT: mm/in	DWG NO.:
APPD	DATE	SIZE: A4	DC-044AE-2.5
WEIGHT	SHEET	REVISION	

UNSPECIFIED TOLERANCES	X.KX ±0.2mm	±5°
	X.XX ±0.1mm	
	X.XXX ±0.05mm	
XKB INDUSTRIAL PRECISION CO.,LIMITED		
1.0g	1/1	A0