

PCB LAYOUT TOP VIEW
TOLERANCES: ±0.05

SPECIFICATIONS:

规格:

1. ELECTRICAL CHARACTERISTICS:

电气特性:

1-1. RATING:

等级:

1-2. CONTACT RESISTANCE: 30MQ MAX. (INITIAL)

接触电阻: 最大30MQ (初始)

1-3. DIELECTRIC WITHSTANDING VOLTAGE: 500V AC FOR ONE MINUTE

介质耐受电压: 500V AC FOR ONE MINUTE

1-4. INSULATION RESISTANCE: 100MQ MIN. MEASURED BY 500V DC

绝缘电阻: 500V 直流电测得的最小值为100MQ

2. MECHANICAL CHARACTERISTICS:

机械特性:

2-1. INSERTION FORCE: 0.3~3.0 KGF

插入力: 0.3~3.0 KGF

2-2. WITHDRAWAL FORCE: 0.3~3.0 KGF

拔出力: 0.3~3.0 KGF

3. LIFE TEST: 5,000 CYCLES MIN.

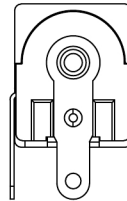
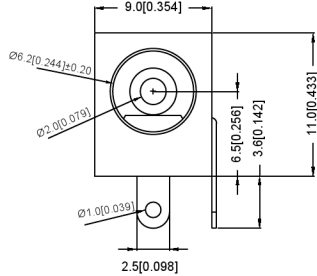
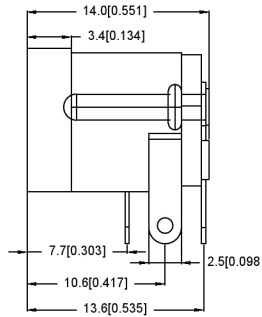
寿命试验: 至少5000次循环。

4. FOR REFLOW SOLDERING LEAD-FREE PROCESS.

用于回流焊无铅工艺。

5. REPRESENT CRITICAL DIMENSIONS.

表示关键尺寸



广东星坤科技股份有限公司
MATING BUCKING
Jack Insertion Depth: 9.0mm

SCHEMATIC	
Model	DC-005
Center Pin	2.0
	2.5
	3.0

	MATERIAL	PLATING
center pin	Brass	silver
terminal 1	Brass	silver
terminal 2	Phosphor Bronze	silver
terminal 3	Brass	silver
plastic	Pbt	

生	日期
效	
Δ	
Δ	
MARK	DESCRIPTION
文件工程章	
REVISIONS	
DATE	REVISED
APPROVED	
UNSPECIFIED TOLERANCES	

ANGLAR	±5°
X.X	±0.2mm
X.XX	±0.1mm
X.XXX	±0.05mm

DSND	DATE	SCALE: N/A	MODEL TYPE: DC POWER JACK
DWN	DATE	VIEW:	PART NO.:
CHKD	DATE	UNIT: mm/in	DWG NO.:
APPD	DATE	SIZE: A4	DC-005-5A-2.0
XKB INDUSTRIAL PRECISION CO., LIMITED			WEIGHT
			1.0g
			SHEET
			1/1
			REVISION
			A0