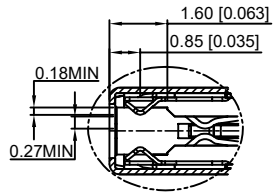
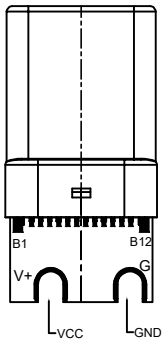
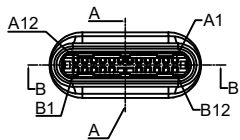
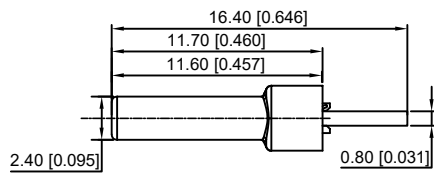
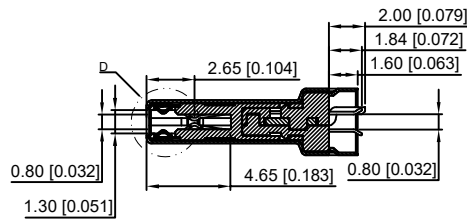


SECT B-B



D
2:1

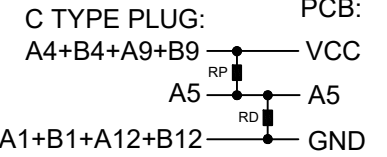


SECT A-A

P/N	R/C
U261-24XXN-4B0140	RP(56KΩ)
U261-24XXN-4B0177	

U261-24XXN-4B0177U

- 1: Au
2: Ni
- 1: Au1u"
2: Au3u"
4: Au15u"
5: Au30u"



A6+A7短路, PCB板不引焊盘

REMARKS:

1.CONTACT INSERTION AND WITHDRAW FORCE:

- 1.Insertion force: 5N-20N max.
2. Withdrawal force: 8N-20N.
- 3.Durability : 10000Cycles.

2.ELECTRIC PROPERTY:

- 1.Contact current rating: 3A.
- 2.Dielectric Strength: 100V AC(RMS).
- 3.Insulation Resistance: 100 megaohms min.
- 4.Contact resistance: 40mOhms MAX.FOR VBUS,GND AND OTHER CONTACT 50mOhms MAX.AFTER ENVIRONMENT TEST

3.AMBIENT TEMPERATURE:

- 1.Operating temperature: -55°C to +85°C.

A12	A11	A10	A9	A8	A7	A6	A5	A4	A3	A2	A1
GND	RX2+	RX2-	Vbus	SBU1	D-	D+	CC	Vbus	TX1-	TX1+	GND
GND	TX2+	TX2-	Vbus	Vconn			SBU2	Vbus	RX1-	RX1+	GND
B1	B2	B3	B4	B5	B6	B7	B8	B9	B10	B11	B12

ITEM	DESCRIPTION	MATERIAL	REMARKS
6	Shrapnel	SUS T=0.10mm	
5	Shell	SUS T=0.15mm	Ovep-plating: Ni
4	Terminal	C7025 T=0.15mm	Ovep-plating:Au Ni/Sn
3	Latch	SUS T=0.4mm	
2	Housing	LCP	UL94-0
1	Housing Stopper	LCP	UL94-0

					ANGULAR	±5°	DSND		DATE		SCALE: N/A	MODEL TYPE:		
					L ≤ 4	±0.2	DWN		DATE		VIEW:	3.1 TYPE C		
					4 < L ≤ 16	±0.3	CHKD		DATE		UNIT: mm/in	PART NO.:		
					16 < L ≤ 63	±0.4	APPD		DATE		SIZE: A4	DWG NO.:		
					L > 63	±0.5						U261-24XXN-4B0177U		
REVISIONS					UNSPECIFIED TOLERANCES		XKB INDUSTRIAL PRECISION CO.,LIMITED					WEIGHT	SHEET	REVISIC
www.xk-dg.cn www.helloxkb.com www.helloxkb.cn												1.0g	1/1	A0