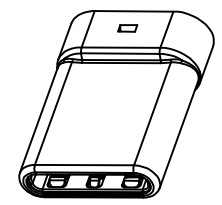
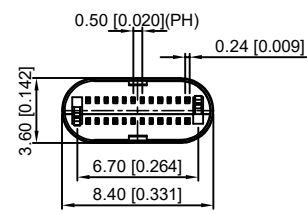
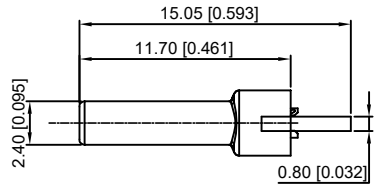
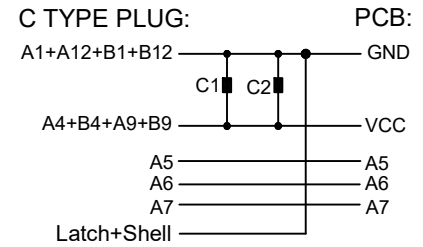


SECT B-B



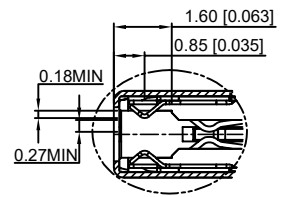
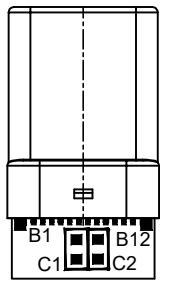
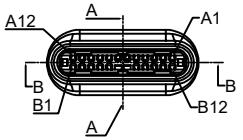
P/N	R/C
U261-24XXN-4B0452	C1, C2(100nF±20%)

U261-24XXN-4B0452
 1: Au
 2: Ni
 1: Au1u"
 2: Au3u"
 4: Au15u"
 5: Au30u"

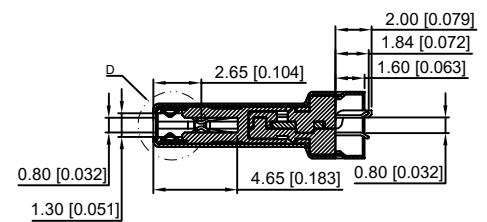


REMARKS:

- CONTACT INSERTION AND WITHDRAW FORCE:
 - Insertion force: 5N-20N max.
 - Withdrawal force: 8N-20N.
 - Durability : 10000Cycles.
- ELECTRIC PROPERTY:
 - Contact current rating: 3A.
 - Dielectric Strength: 100V AC(RMS).
 - Insulation Resistance: 100 megaohms min.
 - Contact resistance:
 - 40mOhms MAX.FOR VBUS,GND AND OTHER CONTACT
 - 50mOhms MAX.AFTER ENVIRONMENT TEST
- AMBIENT TEMPERATURE:
 - Operating temperature: -55°C to +85°C.



D
2:1



SECT A-A

A12	A11	A10	A9	A8	A7	A6	A5	A4	A3	A2	A1
GND	RX2+	RX2-	Vbus	SBU1	D-	D+	CC	Vbus	TX1-	TX1+	GND
GND	TX2+	TX2-	Vbus	Vconn			SBU2	Vbus	RX1-	RX1+	GND
B1	B2	B3	B4	B5	B6	B7	B8	B9	B10	B11	B12

6	Shrapnel	SUS T=0.10mm	
5	Shell	SUS T=0.15mm	Ovep-plating: Ni
4	Terminal	C7025 T=0.15mm	Ovep-plating: Au Ni/Sn
3	Latch	SUS T=0.4mm	
2	Housing	LCP	UL94-0
1	Housing Stopper	LCP	UL94-0
ITEM	DESCRIPTION	MATERIAL	REMARKS

ΔX						ANGLAR	±5°
ΔX						L ≤ 4	±0.2
ΔX						4 < L ≤ 16	±0.3
MARK	DESCRIPTION	DATE	REVISED	APPROVED		16 < L ≤ 63	±0.4
	REVISIONS					L > 63	±0.5
						UNSPECIFIED TOLERANCES	

DSND		DATE		SCALE: N/A	MODEL TYPE: 3.1 TYPE C
DWN		DATE		VIEW:	PART NO.:
CHKD		DATE		UNIT: mm/in	DWG NO.:
APPD		DATE		SIZE: A4	U261-24XXN-4B0452
					WEIGHT: 1.0g
					SHEET: 1/1
					REVISION: A0