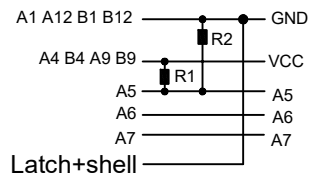


P/N	R/C
U261-24XXN-4B0151	R1(56KΩ)
U261-24XXN-4B0178	R2(6.98KΩ)

U261-24XXN-4B0178

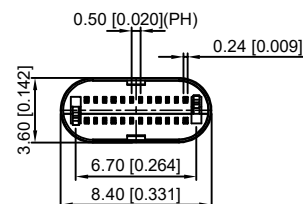
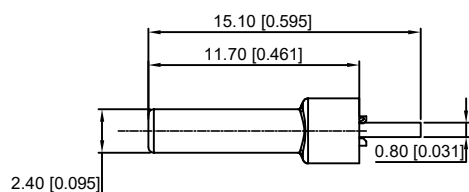
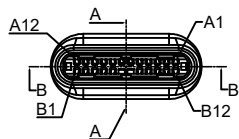
C TYPE PLUG:

PCB:



1: Au
2: Ni

1: Au1u"
2: Au3u"
4: Au15u"
5: Au30u"



REMARKS:

1. CONTACT INSERTION AND WITHDRAW FORCE :

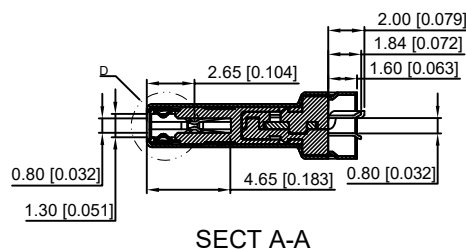
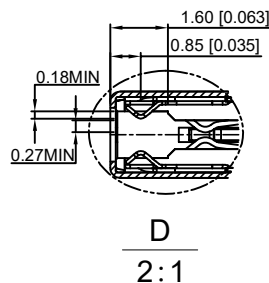
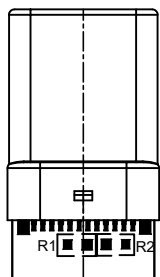
1. Insertion force : 5N-20N max.
2. Withdrawal force : 8N-20N.
3. Durability : 10000Cycles.

2. ELECTRIC PROPERTY :

1. Contact current rating : 3A.
2. Dielectric Strength : 100V AC(RMS).
3. Insulation Resistance : 100 megaohms min.
4. Contact resistance :
40m0hms MAX.FOR VBUS,GND AND OTHER CONTACT
50m0hms MAX.AFTER ENVIRONMENT TEST

3. AMBIENT TEMPERATURE :

1. Operating temperature : -55°C to +85°C.



A12	A11	A10	A9	A8	A7	A6	A5	A4	A3	A2	A1
GND	RX2+	RX2-	Vbus	SBU1	D-	D+	CC	Vbus	TX1-	TX1+	GND
GND	TX2+	TX2-	Vbus	Vconn			SBU2	Vbus	RX1-	RX1+	GND
B1	B2	B3	B4	B5	B6	B7	B8	B9	B10	B11	B12

6	Shrapnel	SUS T=0.10mm	
5	Shell	SUS T=0.15mm	Ovep-plating: Ni
4	Terminal	C7025 T=0.15mm	Ovep-plating: Au Ni/Sn
3	Latch	SUS T=0.4mm	
2	Housing	LCP	UL94-0
1	Housing Stopper	LCP	UL94-0
ITEM	DESCRIPTION	MATERIAL	REMARKS

					DSND		DATE		SCALE: N/A	MODEL TYPE: 3.1 TYPE C		
					DWN		DATE		VIEW:	PART NO.:		
					CHKD		DATE		UNIT: mm/in	DWG NO.:		
					APPD		DATE		SIZE: A4	U261-24XXN-4B0178		
					UNSPECIFIED TOLERANCES					WEIGHT	SHEET	REVISION
					XKB INDUSTRIAL PRECISION CO., LIMITED					1.0g	1/1	A0

MARK	DESCRIPTION	DATE	REVISED	APPROVED
REVISIONS				
www.xk-dg.cn www.helloxkb.com www.helloxkb.cn				

ANGULAR	±5°
L ≤ 4	±0.2
4 < L ≤ 16	±0.3
16 < L ≤ 63	±0.4
L > 63	±0.5