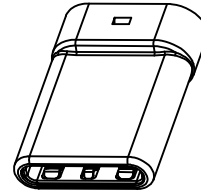


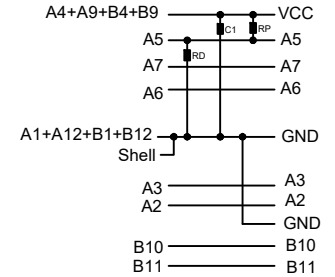
SECT B-B



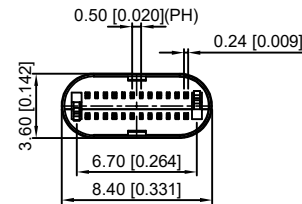
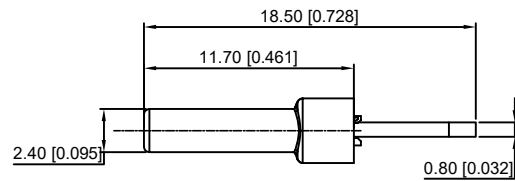
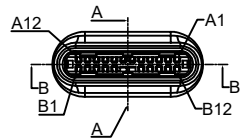
| P/N | R/C |
|-------------------|---------------------------|
| U261-24XXN-4B0281 | C(10nF/30V MIN) |
| U261-24XXN-4B0165 | C(10nF/30V MIN)+RD(5.1KΩ) |
| U261-24XXN-4B0174 | C(10nF/30V MIN)+RP(56KΩ) |

U261-24XXN-4B0165

C TYPE PLUG: PCB:



- 1: Au
- 2: Ni
- 1:Au1u"
- 2:Au3u"
- 4:Au15u"
- 5:Au30u"



REMARKS:

1.CONTACT INSERTION AND WITHDRAW FORCE :

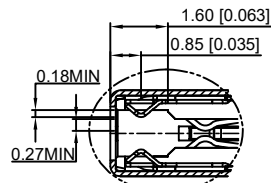
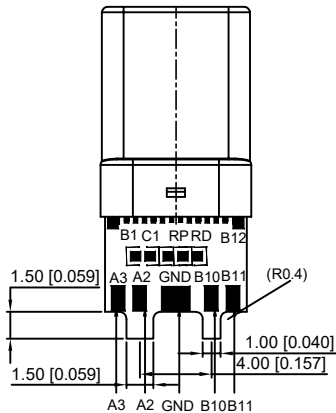
- 1.Insertion force : 5N-20N max.
2. Withdrawal force : 8N-20N.
- 3.Durability : 10000Cycles.

2.ELECTRIC PROPERTY :

- 1.Contact current rating : 3A.
- 2.Dielectric Strength : 100V AC(RMS).
- 3.Insulation Resistance : 100 megaohms min.
- 4.Contact resistance : 40mohms MAX.FOR VBUS,GND AND OTHER CONTACT
50mohms MAX.AFTER ENVIRONMENT TEST

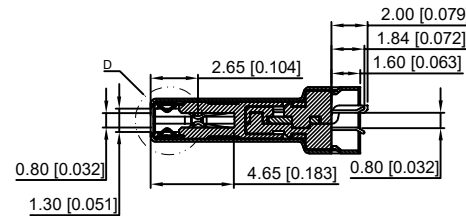
3.AMBIENT TEMPERATURE :

- 1.Operating temperature : -55°C to +85°C.



D

2:1



SECT A-A

| | | | | | | | | | | | |
|-----|------|------|------|-------|----|----|------|------|------|------|-----|
| A12 | A11 | A10 | A9 | A8 | A7 | A6 | A5 | A4 | A3 | A2 | A1 |
| GND | RX2+ | RX2- | Vbus | SBU1 | D- | D+ | CC | Vbus | TX1- | TX1+ | GND |
| GND | TX2+ | TX2- | Vbus | Vconn | | | SBU2 | Vbus | RX1- | RX1+ | GND |
| B1 | B2 | B3 | B4 | B5 | B6 | B7 | B8 | B9 | B10 | B11 | B12 |

| | | | |
|------|-----------------|----------------|-----------------------|
| 6 | Shrapnel | SUS T=0.10mm | |
| 5 | Shell | SUS T=0.15mm | Ovep-plating : Ni |
| 4 | Terminal | C7025 T=0.15mm | Ovep-plating:Au Ni/Sn |
| 3 | Latch | SUS T=0.4mm | |
| 2 | Housing | LCP | UL94-0 |
| 1 | Housing Stopper | LCP | UL94-0 |
| ITEM | DESCRIPTION | MATERIAL | REMARKS |

| | | | | | | |
|--------------------------------------|--|------|--|-------------|------------------------|----------|
| DSND | | DATE | | SCALE: N/A | MODEL TYPE: 3.1 TYPE C | |
| DWN | | DATE | | VIEW: | PART NO.: | |
| CHKD | | DATE | | UNIT: mm/in | DWG NO.: | |
| APPD | | DATE | | SIZE: A4 | U261-24XXN-4B0165 | |
| | | | | WEIGHT | SHEET | REVISION |
| XKB INDUSTRIAL PRECISION CO.,LIMITED | | | | 1.0g | 1/1 | A0 |

| | | | | | | |
|---|-------------|------|---------|----------|-------------|------------------------|
| ΔX | | | | | ANGLAR | ±5° |
| ΔX | | | | | L ≤ 4 | ±0.2 |
| ΔX | | | | | 4 < L ≤ 16 | ±0.3 |
| ΔX | | | | | 16 < L ≤ 63 | ±0.4 |
| MARK | DESCRIPTION | DATE | REVISED | APPROVED | L > 63 | ±0.5 |
| REVISIONS | | | | | | UNSPECIFIED TOLERANCES |
| www.xk-dg.cn www.helloxkb.com www.helloxkb.cn | | | | | | |