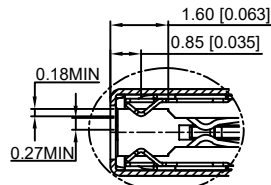
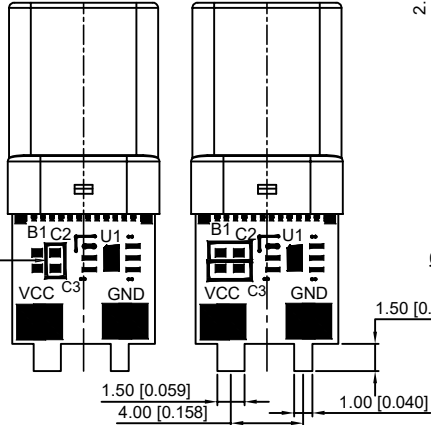
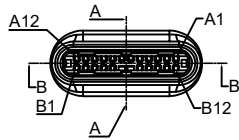
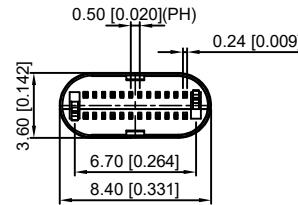
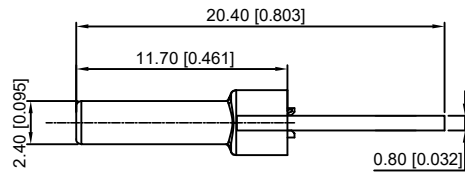
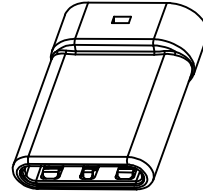
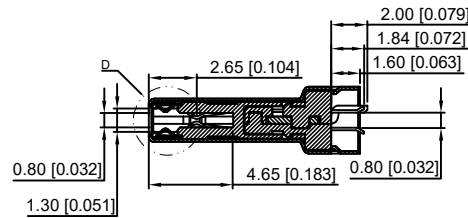


SECT B-B



D  
2:1



SECT A-A

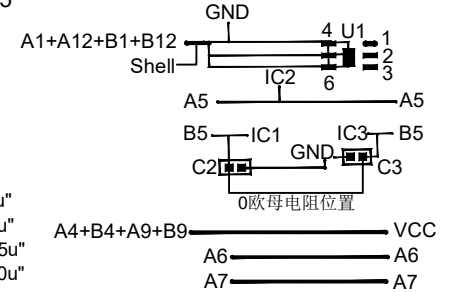
A12	A11	A10	A9	A8	A7	A6	A5	A4	A3	A2	A1
GND	RX2+	RX2-	Vbus	SBU1	D-	D+	CC	Vbus	TX1-	TX1+	GND
GND	TX2+	TX2-	Vbus	Vconn			SBU2	Vbus	RX1-	RX1+	GND
B1	B2	B3	B4	B5	B6	B7	B8	B9	B10	B11	B12

P/N	R/C
U261-24XXN-4B0355	C2, C3(0.1uF X5R 6.3V) IC,HUSB330DN6(DFN-6L)
U261-24XXN-4B0363	在C2与C3靠近IC的位置整着贴一个(0欧姆电阻)

C TYPE PLUG:

PCB:

U261-24XXN-4B0355



- 1: Au  
2: Ni  
1: Au1u"  
2: Au3u"  
4: Au15u"  
5: Au30u"

REMARKS:

- 1.CONTACT INSERTION AND WITHDRAW FORCE:  
1.Insertion force: 5N-20N max.  
2. Withdrawal force: 8N-20N.  
3.Durability : 10000Cycles.
- 2.ELECTRIC PROPERTY:  
1.Contact current rating: 3A.  
2.Dielectric Strength: 100V AC(RMS).  
3.Insulation Resistance: 100 megaohms min.  
4.Contact resistance:  
40m0hms MAX.FOR VBUS,GND AND OTHER CONTACT  
50m0hms MAX.AFTER ENVIRONMENT TEST
- 3.AMBIENT TEMPERATURE:  
1.Operating temperature: -55°C to +85°C.

ITEM	DESCRIPTION	MATERIAL	REMARKS
6	Shrapnel	SUS T=0.10mm	
5	Shell	SUS T=0.15mm	Ovep-plating: Ni
4	Terminal	C7025 T=0.15mm	Ovep-plating: Au Ni/Sn
3	Latch	SUS T=0.4mm	
2	Housing	LCP	UL94-0
1	Housing Stopper	LCP	UL94-0

MARK	DESCRIPTION	DATE	REVISED	APPROVED	UNSPECIFIED TOLERANCES
Δx					ANGLAR ±5°
Δx					L ≤ 4 ±0.2
Δx					4 < L ≤ 16 ±0.3
					16 < L ≤ 63 ±0.4
					L > 63 ±0.5

DSND	DATE	SCALE: N/A	MODEL TYPE:
DWN	DATE	VIEW:	3.1 TYPE C
CHKD	DATE	UNIT: mm/in	PART NO.:
APPD	DATE	SIZE: A4	DWG NO.:
			U261-24XXN-4B0355
XKB INDUSTRIAL PRECISION CO.,LIMITED			WEIGHT
			1.0g
			SHEET
			1/1
			REVISION
			A0