

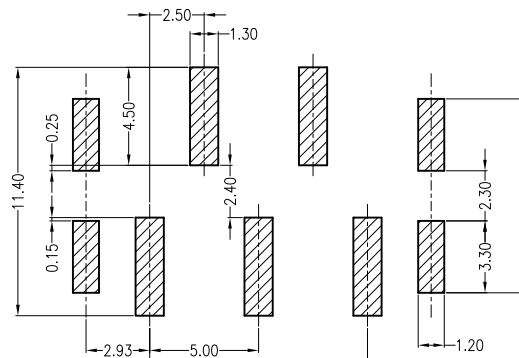
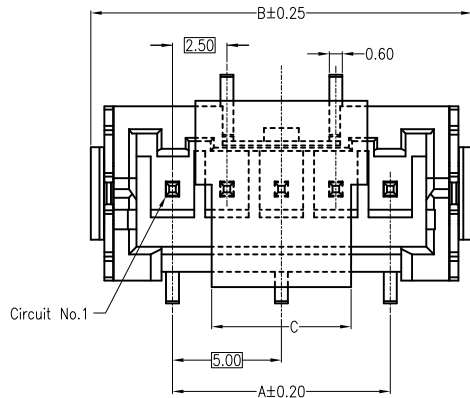
### Specifications :

- Voltage rating: 250V AC / DC
- Current rating: 3A AC / DC
- Withstanding voltage: 1000 V AC/minute
- Temperature range: -25°C~+85°C
- Insulation resistance: ≥1000MΩ
- Contact resistance: ≤10mΩ
- After environmental testing: ≤20mΩ

X2508 W V S-XX X -9T XX XX

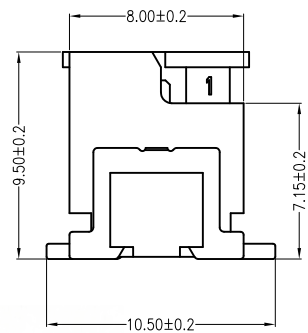
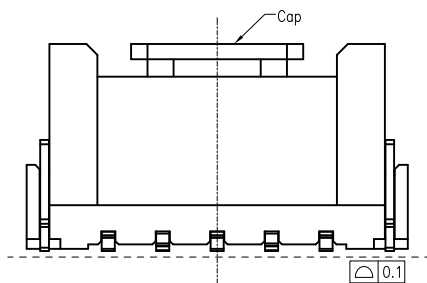
① ② ③ ④ ⑤ ⑥ ⑦ ⑧ ⑨

- ① Series No.
- ② Category: W-WAFER
- ③ Welding Board Angle: V-Straight 180°
- ④ Welding Way: S-SMT
- ⑤ Row No.-Pin No.: XX-02P~15P
- ⑥ Plug the Pin & Special No.
- ⑦ Material: 9T-PA9T 94V-0
- ⑧ Plating Category: SW-Fog Tin plating
- ⑨ Color : Blank-Natural Color



RECOMMENDED PCB LAYOUT

Poles	Dimensions (mm)			Poles	Dimensions (mm)		
	A	B	C		A	B	C
02	2.50	10.00	5.30	10	22.50	30.00	6.40
03	5.00	12.50		11	25.00	32.50	
04	7.50	15.00	12	27.50	35.00		
05	10.00	17.50	13	30.00	37.50		
06	12.50	20.00	14	32.50	40.00		
07	15.00	22.50	15	35.00	42.50		
08	17.50	25.00					
09	20.00	27.50					



X2508WVS-XX-9TSW	PA9T UL 94V-0	Brass	Tin-Plated	Brass	Tin Plating	X2508H
PART NO	Material	Material(Pin)	Finish(Pin)	Material (Solder Tabs)	Finish (Solder Tabs)	Mates With Housing

For and on behalf of  
**XKB INDUSTRIAL PRECISION CO., LIMITED**  
 香港星坤工業精密有限公司

△ X					ANGULAR	±5°
△ X					L ≤ 4	±0.2
△ X					4 < L ≤ 16	±0.3
△ X					16 < L ≤ 63	±0.4
MARK	DESCRIPTION	DATE	REVISED	APPROVED	L > 63	±0.5
					UNSPECIFIED TOLERANCES	

DSND		DATE		SCALE: N/A	MODEL TYPE: X2508WVS-XX-9TSW	
DWN		DATE		VIEW:	PART NO.:	
CHKD		DATE		UNIT: mm	2.5 mm Crimp Style Connector	
APPD		DATE		SIZE: A4	DWG NO.:	
				WEIGHT	SHEET	REVISION
				1.0g	1/1	A0

**XKB INDUSTRIAL PRECISION CO., LIMITED**