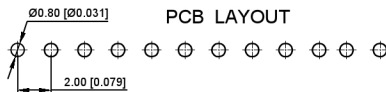
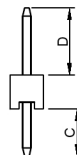
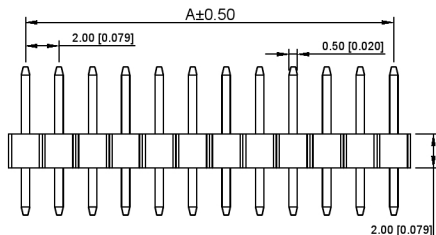
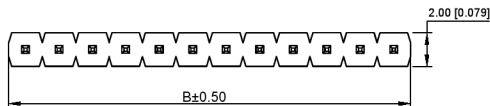


Pin数	尺寸A	尺寸B
1		2
2	2	4
3	4	6
4	6	8
5	8	10
6	10	12
7	12	14
8	14	16
9	16	18
10	18	20
11	20	22
12	22	24
13	24	26
14	26	28
15	28	30
16	30	32
17	32	34
18	34	36
19	36	38
20	38	40
21	40	42
22	42	44
23	44	46
24	46	48
25	48	50
26	50	52
27	52	54
28	54	56
29	56	58
30	58	60
31	60	62
32	62	64
33	64	66
34	66	68
35	68	70
36	70	72
37	72	74
38	74	76
39	76	78
40	78	80



XXB Connectivity

PCB LAYOUT

XXB Connectivity

规格 Specifications:

- 额定电压 Voltage rating:250VAC/DC.
- 额定电流 Current rating:3A AC/DC
- 耐电压 Withstanding voltage:1000V AC/minute
- 温度区间 Temperature range:-40°C to +105°C
- 绝缘电阻 Insulation resistance:≥1000MΩ Min
- 接触电阻 Contact resistance:≤20MΩ Max
- 材料 Material: PA6T 94V-0
- 镀层 Plating Category: 1U"Gold
- 颜色 Color:Blank-Natural color

XXB Connectivity

X4611W V. XX I- C28 D40

① ② ③ ④ ⑤ ⑥ ⑦

- ① Series No.
- ② Category:W-wafer
- ③ Welding Board Angle:R-Stright 180°
- ④ Row No -Pin No:XX-01P-40P
- ⑤ Plastic height: l=2.0mm
- ⑥ Pin length:C=2.8mm
- ⑦ Pin length:D=4.0mm

XXB Connectivity

X4611W-XXI-C28D40	PA6T 94V-0	Brass	1U"Gold	X4611WF
PART NO.	Material	Material(Pin)	Finish(Pin)	Suitable XXB Terminal

广东星坤科技股份有限公司

生
發

日
期

文件工程章

REVISIONS

www.xxkg.cn www.helloxxb.com www.helloxxb.cn

UNSPECIFIED TOLERANCES

ANGULAR	±5°
L ≤ 4	±0.2
4 < L ≤ 16	±0.3
16 < L ≤ 63	±0.4
L > 63	±0.5

DSND	DATE	SCALE: N/A	MODEL TYPE: X4611WV-XXI-C28D40
DWN	DATE	VIEW:	PART NO.:
CHKD	DATE	UNIT: mm/in	2.00mm Crimp Style Connector
APPD	DATE	SIZE: A4	DWG NO.:
XXB INDUSTRIAL PRECISION CO., LIMITED			WEIGHT 1.0g
			SHEET 1/1
			REVISION A0