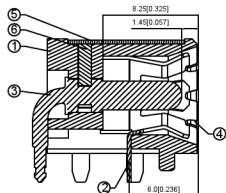
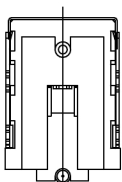
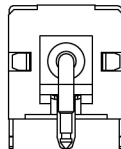
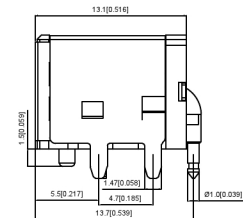
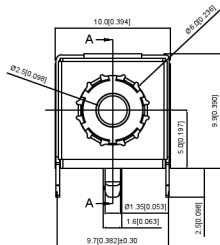
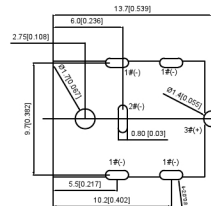
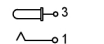


P.C.B LAYOUT



SCHEMATIC



SPECIFICATION

规范

1. Rating : DC 20V 10A;
额定值 : DC 20V 10A;
2. Contact resistance : 0.03Ω;
接触电阻 : 0.03Ω;
3. Insulation resistance : ≥100MΩ (DC250V)
绝缘电阻 : ≥100MΩ (DC250V)
4. Withstand voltage : 500V AC
耐压 : 500V AC
5. Insertion and extraction force : 5-40N
插拔力 : 5-40N
6. life test : 5,000 cycles.
寿命试验 : 5,000次循环。

广东星坤科技股份有限公司

生效	日期
文件工程章	DESIGN
REVISIONS	DATE
REVISED	APPROVED
UNSPECIFIED TOLERANCES	

DSND	DATE	SCALE: N/A	MODEL TYPE: DC POWER JACK
DWN	DATE	VIEW:	PART NO.:
CHKD	DATE	UNIT: mm/in	DWG NO.:
APPD	DATE	SIZE: A4	DC-042C-Z-2.5-A
			WEIGHT 1.0g
			SHEET 1/1
			REVISION A0

ANGLAR	±5°
X.X	±0.2mm
X.XX	±0.1mm
X.XXX	±0.05mm
XKB INDUSTRIAL PRECISION CO., LIMITED	