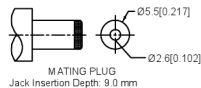
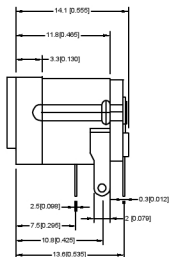
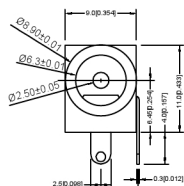


PCB LAYOUT TOP VIEW



SPECIFICATIONS:

规格:

1. ELECTRICAL CHARACTERISTICS:

电气特性:

1-1.RATING:

评级:

1-2. CONTACT RESISTANCE:30mQ MAX.(INITIAL)

接触电阻: 最大30mQ (初始)

1-3. DIELECTRIC WITHSTANDING VOLTAGE:

500V AC FOR ONE MINUTE

介质耐受电压:

500V AC FOR ONE MINUTE

1-4.INSULATION RESISTANCE:

100MΩ MIN. MEASURED BY 500V DC

绝缘电阻:

500V 直流电测得的最小值为100MΩ

2. MECHANICAL CHARACTERISTICS:

机械特性:

2-1. INSERTION FORCE:0.3~3.0 KGF

插入力: 0.3~3.0 KGF

2-2. WITHDRAWAL FORCE:0.3~3.0 KGF

拔出力: 0.3~3.0 KGF

3. LIFE TEST:5,000 CYCLES MIN.

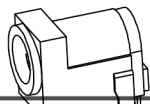
寿命试验: 至少5000次循环。

4.FOR REFLOW SOLDERING LEAD-FREE PROCESS.

用于回流焊无铅工艺。

5.REPRESENT CRITICAL DIMENSIONS.

表示关键尺寸。



广东星坤科技股份有限公司

SCHEMATIC	
Model	DC-005E
Center Pin	Ø2.0 mm
	Ø2.5 mm

	MATERIAL	PLATING
center pin	Brass	tin
terminal 1	Brass	tin
terminal 2	Sus	tin
terminal 3	Brass	tin
plastic	Pbt	

生效日期		
文件工程章	DESCRIPTION	REVISIONS
MARK	DATE	REVISED
	APPROVED	UNSPECIFIED TOLERANCES

DSND	DATE	SCALE: N/A	MODEL TYPE: DC POWER JACK
DWN	DATE	VIEW:	PART NO.:
CHKD	DATE	UNIT: mm/in	DWG NO.:
APPD	DATE	SIZE: A4	DC-005E-2.5A-2.5
XKB INDUSTRIAL PRECISION CO.,LIMITED			WEIGHT 1.0g
			SHEET 1/1
			REVISION A0