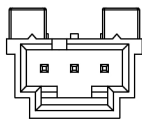
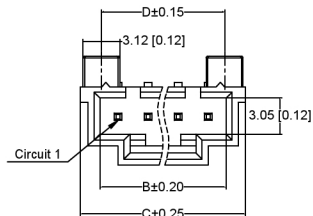
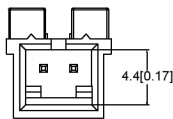


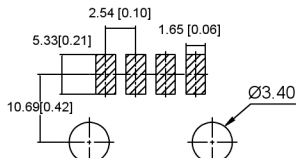
XKB



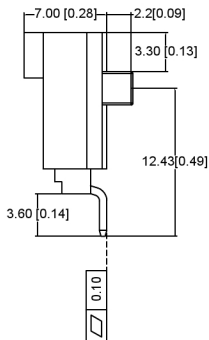
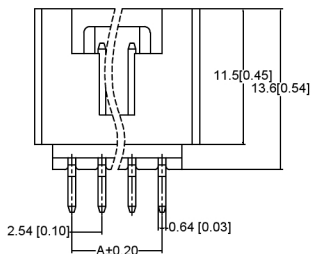
3 CIRCUIT



2 CIRCUIT



P.C.B LAYOUT



Specifications:

规格: XKB  
 Voltage rating: 250V AC/DC  
 额定电压: 250V AC/DC  
 Current rating: 3A AC/DC  
 额定电流: 3A AC/DC  
 Withstanding voltage: 1500V AC/minute xkb  
 耐受电压: 1500V AC/分钟  
 Temperature range: -25°C + 85°C  
 温度范围: -40°C + 105°C  
 Insulation resistance: ≥1000MΩ  
 绝缘电阻: ≥1000MΩ  
 Contact resistance: ≤20mΩ  
 接触电阻: ≤20mΩ XKB  
 After environmental testing: ≤30mΩ  
 环境测试后: ≤30兆欧

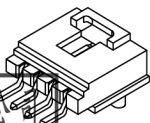
X9556 W R S- XX- 9T XX XX

- ① Series No.
- ② Category: W-wafer
- ③ Welding board Angle: R-90°
- ④ Welding Way: S-SMT
- ⑤ Row No.-Pin No.: XX-Single row
- ⑥ Material: 9T-PA9T 94V-0
- ⑦ Planting Category: V\*\*\*All Gold-Plated \*01-1U
- ⑧ Color: Blank-Natural Color Black

Poles	Dimensions (mm)				Poles	Dimensions (mm)			
	A	B	C	D		A	B	C	D
02	2.54	5.60	8.87	5.33	08	17.78	20.84	24.11	20.57
03	5.08	8.14	11.41	7.87	09	20.32	23.38	26.65	23.11
04	7.62	10.68	13.95	10.41	10	22.86	25.92	29.19	25.65
05	10.16	13.22	16.49	12.95	11	25.40	28.46	31.73	28.19
06	12.70	15.76	19.03	15.49	12	27.94	31.00	34.27	30.73
07	15.24	18.30	21.57	18.03					

X9556WRS-XX-9TV01	PART UL 94V-0	Brass	Gold-Flash	X9556H
PART NO	Material	Material(Pin)	Finish(Pin)	Suitable XKB Terminal

广东星坤科技股份有限公司



生	日期
发	
Δ	
文件工程章	

XKB	ANGLAR	±5°
	L ≤ 4	±0.2
	4 < L ≤ 16	±0.3
	16 < L ≤ 63	±0.4
	L > 63	±0.5
UNSPECIFIED TOLERANCES		

DSND	DATE	SCALE: NA	MODEL TYPE: X9556WRS-XX-9TV01
DWVN	DATE	VIEW: ①	PART NO.: 2.54 mm Crimp Style Connectors
CHKD	DATE	UNIT: mm/in	DWG NO.:
APPD	DATE	SIZE: A4	
XKB INDUSTRIAL PRECISION CO., LIMITED			WEIGHT 1.0g SHEET 1/1 REVISION A0