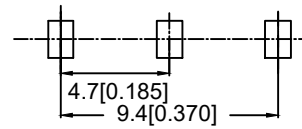
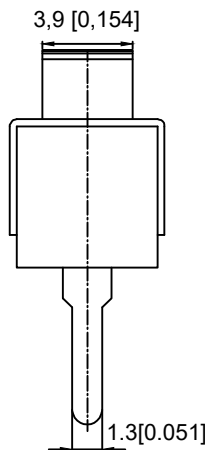
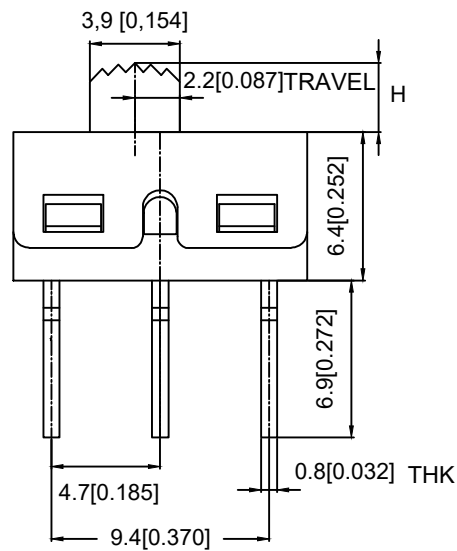
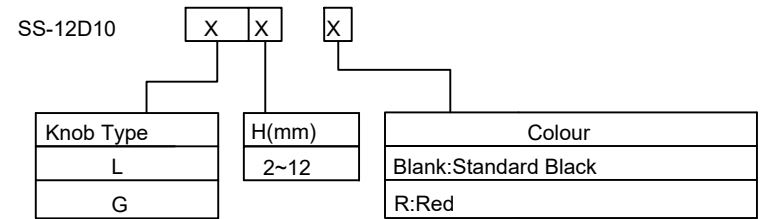
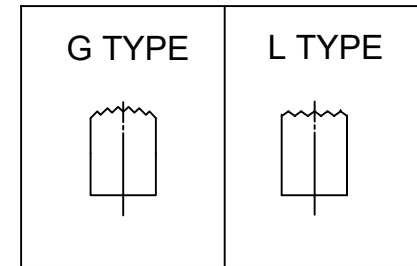


SCHEMATIC (NON-SHORTING)

MODEL CODE



P.C.B LAYOUT
BOTTOM VIEW



Typical Specifications

1. Rating: AC 125V 3A
2. Insulation Resistance: 1,000M min
3. Dielectric strength: 1,500V RMS
4. Operating Life: 10,000 cycles

⑤	Terminal	—	3	Copper Alloy	silver plated	—
④	Contact	—	1	Copper Alloy	silver plated	—
③	Housing	—	1	Stainless Steel		—
②	Slide Handle	—	1	Nylon		—
①	Case	—	1	Diallyl Phthalate (DAP)		—
ITEM	PAPT NAME	TER.NO	QTY	MATERIAL	FINISHING	REMARK

					ANGLAR	±5°	DSND		DATE		SCALE: N/A	MODEL TYPE: SLIDE SWITCH	
Δx					X.X	±0.2mm	DWN		DATE		VIEW:	PART NO.:	
Δx					X.XX	±0.1mm	CHKD		DATE		UNIT: mm/in	DWG NO.:	
Δx					X.XXX	±0.05mm	APPD		DATE		SIZE: A4	SS-12D10XXX	
MARK	DESCRIPTION	DATE	REVISED	APPROVED	UNSPECIFIED TOLERANCES		XKB INDUSTRIAL PRECISION CO., LIMITED				WEIGHT	SHEET	REVISION
	REVISIONS										1.0g	1/1	A0
www.xk-dg.cn www.helloxkb.com www.helloxkb.cn													