

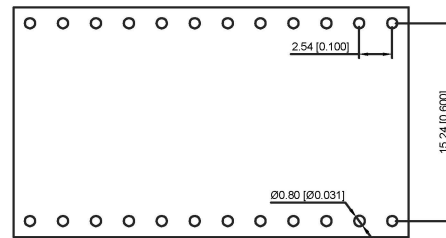
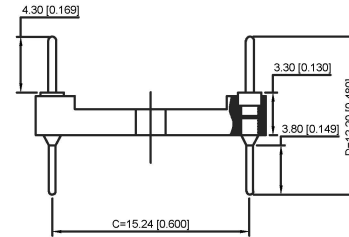
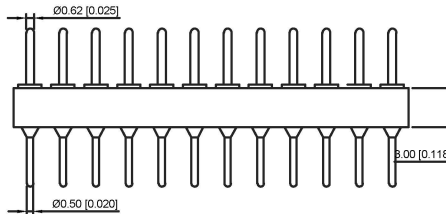
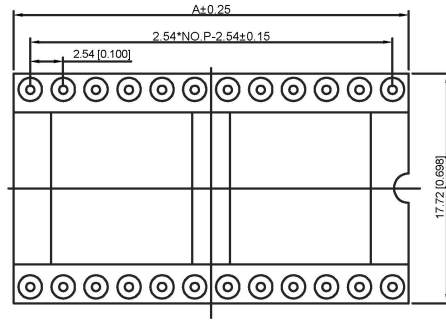
Technical Data
 Pin(outer sleeve):Brass,machined CuZn38Pb2
 Cllp(Contact 4 Finger):Beryllium copper,heat treated
 Insulator:PBT UL94V-0 colour:black
 Tin Plated:2?m/80u"NI,5um/200u"Sn
 Gold Plated:2um"/80u"Ni,GF
 Current rating:3Amps
 Contact resistance:max 10mΩ
 Dielectric strength:min 1000V RMS
 Operating temperature:-40°C to+105°C

X5621W V-2*XX-C1524 D1220

- ① ② ③ ④ ⑤ ⑥

- ① Series.N0.
- ② Category : W-Wafer
- ③ Welding Board Angle : V-Straight 180°
- ④ Row No-Pin No:2*XX-03,04,05,06,07,08,09,10,12,14,16 20,21,24,25
- ⑤ Plastic Height :C=15.24mm
 7.43=7.43mm;92=9.20mm;1020=10.20mm;1120=11.20mm;
 1150=11.50mm;1170=11.70;1390=13.90mm;1340=13.40mm
 1370=13.70mm;1420=14.20mm;1520=15.20mm;1620-16.20mm
 1780=17.80mm;1820=18.20mm
- ⑥ Pin Length :D:1220=12.20mm;42=4.2mm;74=7.40mm;

Poles	Dimensions(mm) A
2*02	5.08
2*03	7.62
2*04	10.16
2*05	12.70
2*06	15.24
2*07	17.78
2*08	20.32
2*09	22.86
2*10	25.40
2*12	30.48
2*14	35.56
2*16	40.64
2*20	50.80
2*21	53.34
2*24	60.96
2*25	63.50



Recommended P.C.B
 Layout(±0.05)

X5621WV-2*XX-C1524D1220	PPS 94V-0	Brass	Tin Gold 1u"	X5621F
PART NO	Material	Material(Terminal)	Finish(Terminal)	Mates With XKB Pin Header

广东星坤科技股份有限公司

生 日期
 日期

文件工程章

REVISIONS

www.xk-ig.cn www.helloxkb.com www.helloxkb.cn

ANGLAR	±5°
L ≤ 4	±0.2
4 < L ≤ 16	±0.3
16 < L ≤ 63	±0.4
L > 63	±0.5

UNSPECIFIED TOLERANCES

DSND	DATE	SCALE: N/A	MODEL TYPE:
DWN	DATE	VIEW:	PART NO.:
CHKD	DATE	UNIT: mm/in	DWG NO.:
APPD	DATE	SIZE: A4	X5621WV-2*XX-C1524D1220
KKB INDUSTRIAL PRECISION CO., LIMITED			WEIGHT
			SHEET
			REVISION
			1.0g
			1/1
			A0