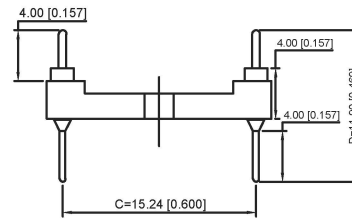
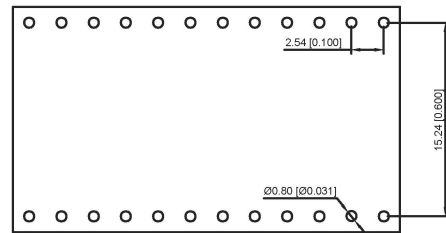
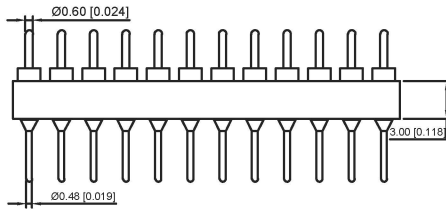
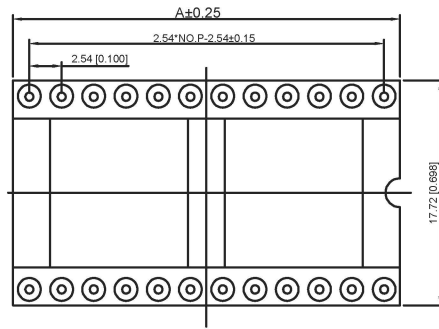


Poles	Dimensions(mm) A
2*02	5.08
2*03	7.62
2*04	10.16
2*05	12.70
2*06	15.24
2*07	17.78
2*08	20.32
2*09	22.86
2*10	25.40
2*12	30.48
2*14	35.56
2*16	40.64
2*20	50.80
2*21	53.34
2*24	60.96
2*25	63.50



Technical Data

Pin(outer sleeve):Brass,machined CuZn38Pb2

Insulator:PPS UL94V-0 colour:black

Current rating:3Amps

Mating pin Ø:0.60/0.48mm

Mechanical life:min 500cycles

Contact resistance:max 10mΩ

Dielectric strength:min 1000V RMS

Operating temperature:-40°C to+105°C

Soldering temperature:+255°C

X5621W V-2*XX-C1524 D1196-1196

- ① ② ③ ④ ⑤ ⑥ ⑦

- ① Series.N0.
- ② Category : W-Wafer
- ③ Welding Board Angle : V-Straight 180°
- ④ Row No-Pin No:2*XX-03,04,05,06,07,08,09,10,12,14,16 20,21,24,25
- ⑤ Plastic Height :C=15.24mm
- ⑥ Pin Length :D:1196=11.96mm;1000=10.0mm;1220=12.20mm;
- ⑦ 1196:Type1196

X5621WV-2*XX-C1524D1196-1196	PPS 94V-0	Brass	Tin Gold 1u"	X5621F
PART NO	Material	Material(Terminal)	Finish(Terminal)	Mates With XKB Pin Header

Recommended P.C.B
Layout(±0.05)

广东星坤科技股份有限公司

生	日期
發	日期
ΔX	
MARK	
文件	工程章

REVISIONS

www.xk-ug.cn www.helloxkb.com www.helloxkb.cn

ANGULAR	±5°
L ≤ 4	±0.2
4 < L ≤ 16	±0.3
16 < L ≤ 63	±0.4
L > 63	±0.5

UNSPECIFIED TOLERANCES

DSND	DATE	SCALE: N/A	MODEL TYPE:
DWN	DATE	VIEW:	PART NO.:
CHKD	DATE	UNIT: mm/in	DWG NO.:
APPD	DATE	SIZE: A4	X5621WV-2*XX-C1524D1196-1196
KKB INDUSTRIAL PRECISION CO.,LIMITED			WEIGHT
			SHEET
			REVISION
			1.0g
			1/1
			A0