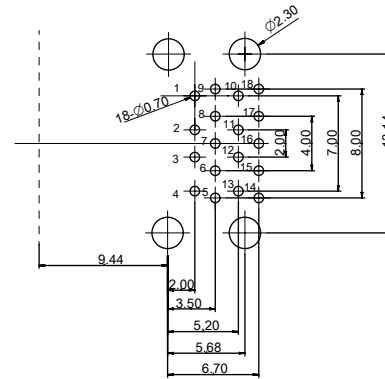
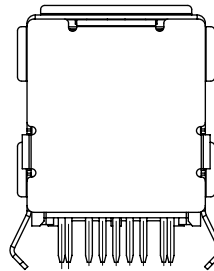
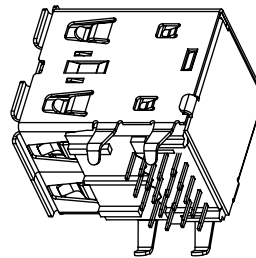
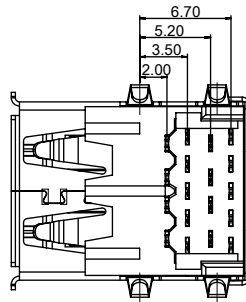
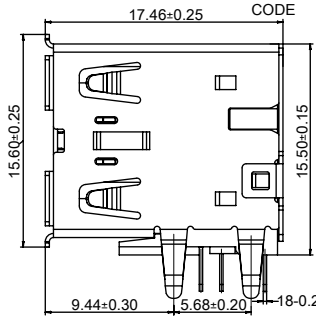
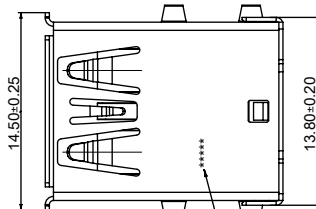
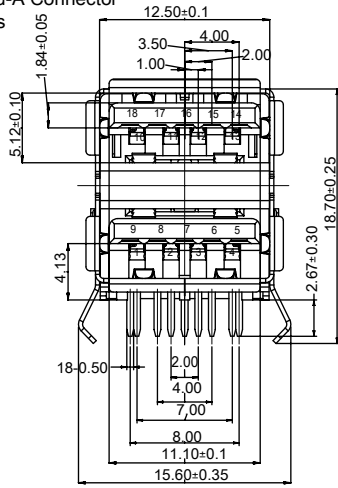


Pin Number	Signal Name	Description
1,10	VBUS	Power
2,11	D-	USB2.0 differential pair
3,12	D+	
4,13	GND	Ground for power return
5,14	StdA_SSRX-	SuperSpeed receiver differential pair
6,15	StdA_SSRX+	
7,16	GND_DRAIN	Ground for signal return
8,17	StdA_SSTX-	SuperSpeed transmitter differential pair
9,18	StdA_SSTX+	
Shell	Shield	Connector metal shell

USB3.0 Standard-A Connector  
Pin Assignments



RECOMMEND P.C.B LAYOUT (THICKNESS=1.2mm)  
(COMPONENT SIDE) TOLERANCE±0.05

NOTES:

- MATERIAL:  
HOUSING: THERMOPLASTIC, GLASS FIBER FILLED, HALOGEN FREE, UL94-HB, COLOR: BLUE.  
COVER: THERMOPLASTIC, GLASS FIBER FILLED, HALOGEN FREE, UL94-HB, COLOR: BLUE.  
USB2.0 CONTACT (SHORT PIN & LONG PIN): COPPER ALLOY.  
USB3.0 CONTACT (SHORT PIN & LONG PIN): COPPER ALLOY.  
MAIN SHELL: STAINLESS STEEL.  
IN CLIP SHELL: STAINLESS STEEL.  
BACK SHELL: STAINLESS STEEL.
- FINISH:  
CONTACT:  
SELECTIVE GOLD (Au) IN CONTACT AREA (SEE TABLE)  
SELECTIVE MATTE TIN (Sn) ALLOY IN SOLDER TAIL AREA  
THICKNESS=120 MICROINCH MINIMUM.  
NICKEL (Ni) OVERALL THICKNESS=80 MICROINCH MINIMUM.  
MAIN SHELL:  
NICKEL (Ni) OVERALL THICKNESS=30 MICROINCH MINIMUM.  
BACK SHELL:  
CLEANING.
- PRODUCT SPECIFICATION REFERS TO PS-48406-001
- PACKAGE SPECIFICATION REFERS TO PK-48406-001
- TEST SUMMARY REFERS TO TS-48406-001
- LEAD FREE AND RoHS COMPLIANT PRODUCT.
- DATE CODE: 

X	X	X	X
YEAR	WEEK	DAY	

TABLE

	PLATING	MOLEX P/N
	30u" Au	48406-0001
	15u" Au	48406-0003
	-	-
	-	-

THIS DRAWING CONTAINS INFORMATION THAT IS PROPRIETARY TO MOLEX ELECTRONIC TECHNOLOGIES, LLC AND SHOULD NOT BE USED WITHOUT WRITTEN PERMISSION

DIMENSION UNITS	SCALE	CURRENT REV DESC: OBSOLETE PART NUMBERS AS PER PCN#508521	
mm	1:1	<div style="text-align: center; font-size: 2em; font-weight: bold;">molex</div> <p>USB3.0 A TYPE, T/H DOUBLE STACK, R/A CONTACT HEIGHT: 4.13</p> <p style="text-align: center;">PRODUCT CUSTOMER DRAWING</p>	
GENERAL TOLERANCES (UNLESS SPECIFIED)			
ANGULAR TOL ± 3.0°			
4 PLACES	±		
3 PLACES	±		
2 PLACES	± 0.2		
1 PLACE	± 0.25	EC NO: 667388	2021/04/20
0 PLACES	±	DRWN: SKANDB	2021/07/05
DRAFT WHERE APPLICABLE MUST REMAIN WITHIN DIMENSIONS		CHK'D: GGA	2021/07/05
FIRST ANGLE PROJECTION		APPR: GGA	2021/07/05
DRAWING		INITIAL REVISION:	
SERIES		DRWN: FYANG05	2013/10/20
MATERIAL NUMBER		APPR: RZHANG	2013/10/31
CUSTOMER		DOCUMENT NUMBER	DOC TYPE
SEE TABLE		SD-48406-001	PSD
GENERAL MARKET		DOC PART	001
SHEET NUMBER		REVISION	B1
1 OF 1			

DOCUMENT STATUS	P1	RELEASE DATE	2021/07/05	08:39:23
-----------------	----	--------------	------------	----------