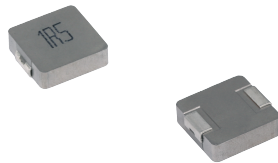


MDE Series
Molding Power Inductors
Size 1250



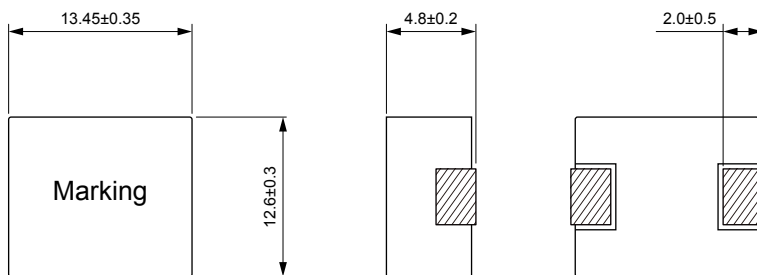
FEATURES

- ROHS, Halogen Free and REACH compliance
- High rated current
- 125 °C maximum total temperature operation
- Low core loss
- Ultra low buzz noise due to molding construction
- 13.8×12.9×5.0mm maximum surface mount package
- Operating temperature range - 55 °C to + 125 °C
- Quantity: 500pcs

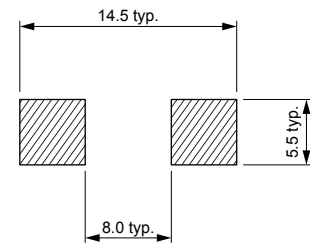
APPLICATION

- Laptops and PCs
- Switch and servers
- Base stations
- DC/DC converters
- Battery powered devices
- SSD modules

Dimensions: [mm]



Land Pattern: [mm]



Electrical Properties:

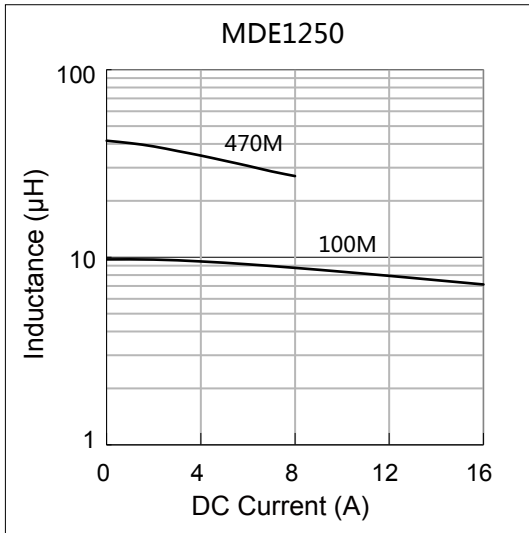
Part No	Inductance @ 100kHz/1V (μH)	Tolerance	DC Resistance Max. (mΩ)	Saturation Current Typ. (A)	Temperature Rise Current Typ. (A)
MDE1250-R22M	0.22	±20%	0.70	75.0	50.0
MDE1250-R36M	0.36	±20%	0.85	50.0	42.0
MDE1250-R50M	0.50	±20%	1.15	48.0	38.0
MDE1250-R68M	0.68	±20%	1.55	46.0	33.0
MDE1250-R82M	0.82	±20%	1.67	39.0	30.0
MDE1250-1R0M	1.00	±20%	2.20	35.0	26.0
MDE1250-1R5M	1.50	±20%	3.20	33.0	23.0
MDE1250-2R2M	2.20	±20%	5.00	24.0	15.0
MDE1250-3R3M	3.30	±20%	7.00	22.0	14.0
MDE1250-4R7M	4.70	±20%	9.00	20.0	13.0
MDE1250-6R8M	6.80	±20%	18.0	16.0	12.0
MDE1250-8R2M	8.20	±20%	20.0	13.0	9.50
MDE1250-100M	10.0	±20%	22.0	12.0	9.00
MDE1250-150M	15.0	±20%	30.0	10.0	8.00
MDE1250-220M	22.0	±20%	58.0	6.50	4.50
MDE1250-330M	33.0	±20%	84.0	6.00	3.50
MDE1250-470M	47.0	±20%	130	5.00	3.00

Saturation Current will cause L to drop approximately 30%

Temperature Rise Current: The actual value of DC current when the temperature rise is ΔT=40°C

Typical Electrical Characteristics:

Inductance vs DC Current Characteristics:



Temperature Rise vs DC Current Characteristics:

