

SMD Power Inductor CDEPI99



Description

- Ferrite core construction.
- Magnetically shielded.
- L × W × H: 10.5 × 9.5 × 10.0 mm Max.
- Product weight: 3.3g(Ref.)
- Moisture Sensitivity Level: 1
- RoHS compliance.

Environmental Data

- Operating temperature range: -40°C ~ +105°C (including coil's self temperature rise)
- Storage temperature range: -40°C ~ +105°C
- Solder reflow temperature: 260 °C peak.

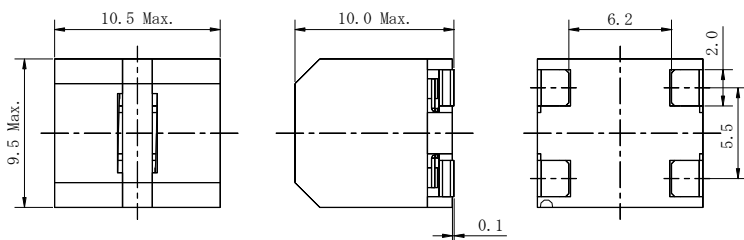
Packaging

- Carrier tape and reel packaging.
- 13.0" diameter reel
- 250pcs per reel

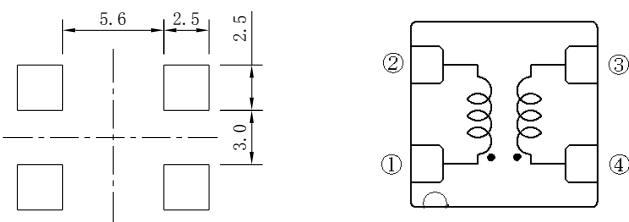
Applications

- Ideally used in D Class Amplifiers.

Dimension - [mm]



Land pattern and Schematics - [mm]



Electrical Characteristics

Part No.	Stamp	Inductance (μH) [Within] ※1	D.C.R. (mΩ) [Max.] (Typ.)	DC Saturation current (A) ※2	Temperature rise current (A) ※3
CDEPI99NP-5R0PC	5R0	5μH ± 25%	13(10)	7.16(8.95)	7.1(8.1)
CDEPI99NP-100MC	100	10μH ± 20%	26(21)	5.24(6.55)	4.2(4.8)
CDEPI99NP-120MC	120	12μH ± 20%	29(23)	4.68(5.85)	4.1(4.7)
CDEPI99NP-150MC	150	15μH ± 20%	29(23)	3.92(4.90)	4.1(4.7)
CDEPI99NP-180MC	180	18μH ± 20%	29(23)	3.31(4.14)	4.1(4.7)
CDEPI99NP-220MC	220	22μH ± 20%	29(23)	2.82(3.52)	4.1(4.7)

※1. Measuring condition: at 100kHz.

※2. Saturation current: The value of D.C. current when the inductance decreases to 75% of it's nominal value.

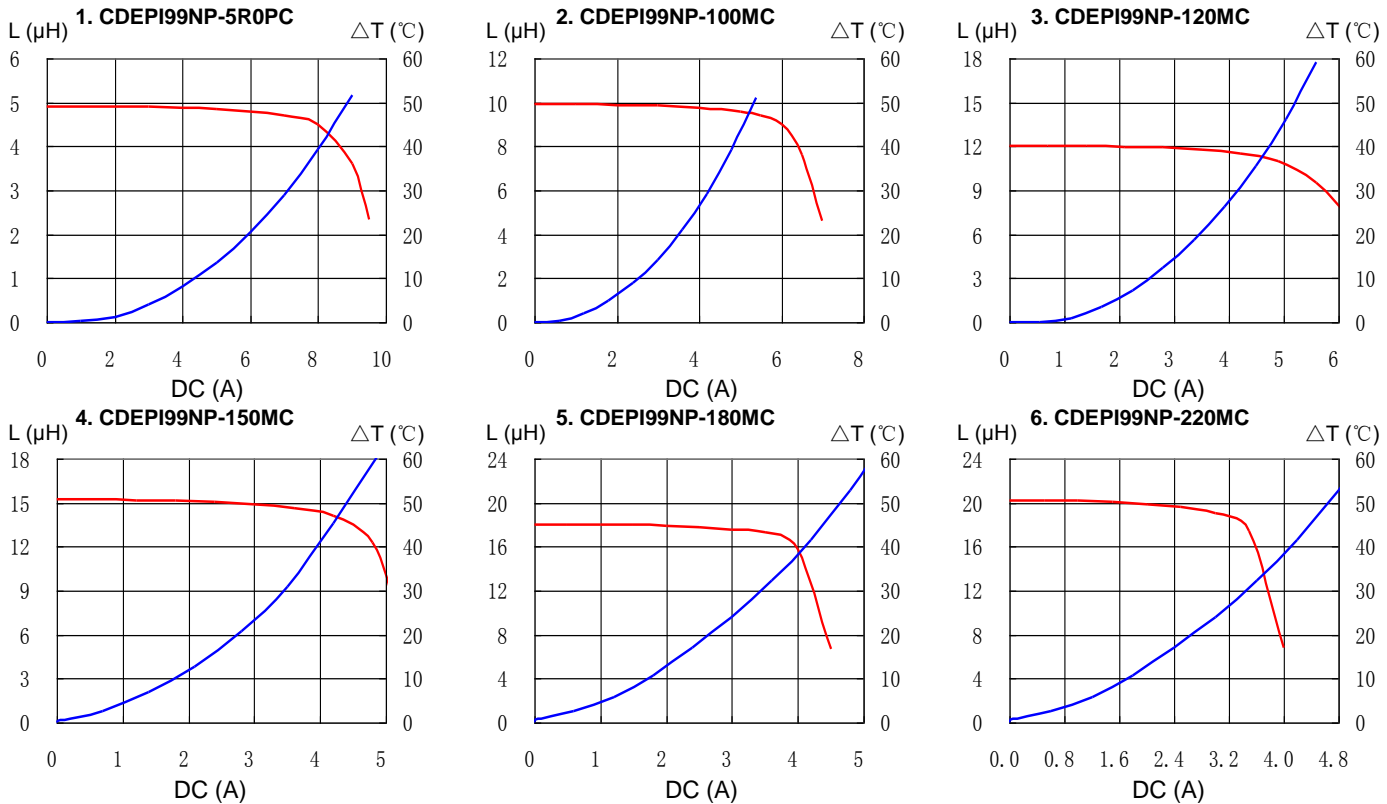
※3. Temperature rise current: The value of D.C. current when the temperature rise is Δt=40°C(Ta=20°C).

SMD Power Inductor CDEPI99



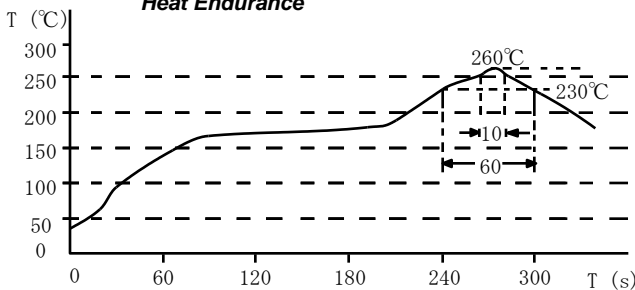
Saturation Current & Temperature Rise Graph

— L (20°C) — ΔT

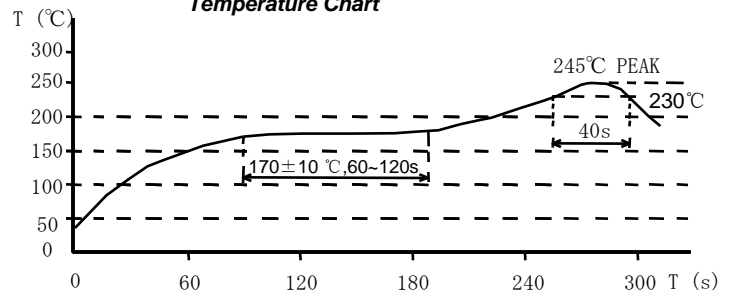


Solder Reflow Condition

Heat Endurance



Temperature Chart



Please refer to the sales offices on our website - <http://www.sumida.com>

Hong Kong

Tel.+852-2880-6781
FAX.+852-2565-9600
sales@hk.sumida.com

Saitama(Japan)

Tel.+81-48-691-7300
FAX.+81-48-691-7340
sales@jp.sumida.com

Chicago

Tel.+1-847-545-6700
FAX. +1-847-545-6720
sales@us.sumida.com

Shanghai

Tel.+86-21-5836-3299
FAX.+86-21-5836-3266
shanghai.sales@cn.sumida.com

Seoul

Tel.+82-2-6237-0777
FAX.+82-2-6237-0778
sales@kr.sumida.com

Obernzell

Tel.+49-8591-937-0
FAX. +49-8591-937-103
contact@eu.sumida.com

Shenzhen

Tel.+86-755-8291-0228
FAX.+86-755-8291-0338
shenzhen.sales@cn.sumida.com

Singapore

Tel.+65-6296-3388
FAX.+65-6841-4426
sales@sg.sumida.com

Neumarkt

Tel.+49-9181-4509-110
FAX. +49-9181-4509-310
infocomp@eu.sumida.com

Taipei

Tel.+886-2-8751-2737
FAX.+886-2-8751-2738
sales@tw.sumida.com

San Jose

Tel.+1-408-321-9660
FAX.+1-408-321-9308
sales@us.sumida.com