

环保物料

TEL: 0769-82001899

Technical Data

Material:

Pin(outer sleeve): Brass, machined CuZn38Pb2

Plating(outer sleeve):

Tin Plated: 2μm/80μm Ni, 5μm/200μm Sn

Gold Plated: 2μm/80μm Ni, 0.8μm gold

Plating(Contact): 2μm/80μm Ni, gold or Tin plated

Insulator: PPS UL94V-0

Clip(Contact 4 Finger): Beryllium copper, heat treated

Electrical:

Current rating: 3Amps/contact max.

Contact resistance: ≤4mΩ/contact

Insulation resistance: ≥1000MΩ at V=100V

Operating voltage: 60VAC/DC

Mechanical:

Average Insertion force with steel pin of ø0.432: <250g

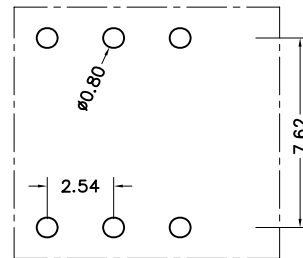
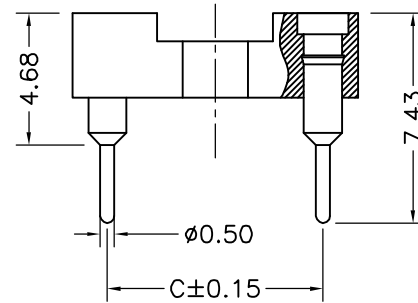
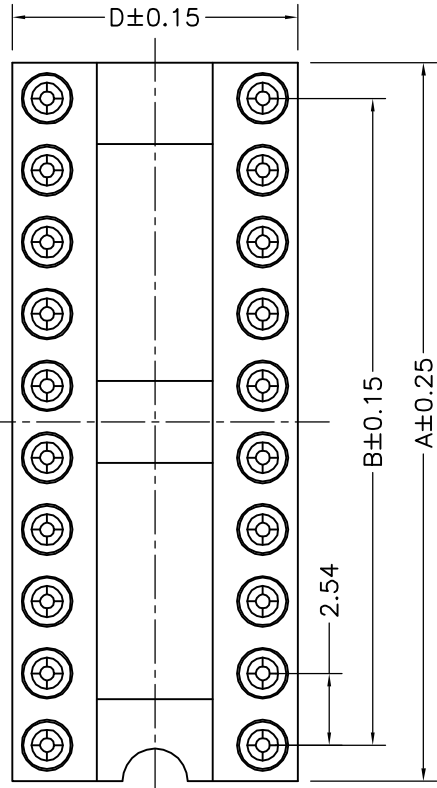
Average withdrawal force with steel pin of ø0.432: >70g

Mechanical life cycle: min 200

Operating temperature: -40°C to +105°C

Soldering temperature: +255°C

Serial number	No. of Positions	PART NO	A	B	C	D
1	6	06	7.62	5.08	7.62	10.10
2	8	08	10.16	7.62	7.62	10.10
3	10	10	12.7	10.16	7.62	10.10
4	12	12	15.24	12.7	7.62	10.10
5	14	14	17.78	15.24	7.62	10.10
6	16	16	20.32	17.78	7.62	10.10
7	18	18	22.86	20.32	7.62	10.10
8	20	20	25.4	22.86	7.62	10.10
9	22	22	27.94	25.4	7.62	10.10
10	24	24	30.48	27.94	7.62	10.10
11	28	28	35.56	33.02	7.62	10.10



PCB LAYOUT

			TOLERANCE UNLESS OTHERWISE		DRAWN	CK tan	XFCN 兴飞连接器有限公司 CONNECTORS XFCN CONNECTORS CO., LTD.		SHEET	1/1
			X. ±0.30	X° ±5°	CHKD				DATE	2010.4.12
			.X ±0.20	.X° ±2°	APPD		PRODUCT NAME	2.54mm IC Socket Connectors	UNITS	mm
			.XX ±0.08	.XX° ±1°	VIEW	⊕	PART. NO.	IC254V-12-XX-0743	SCALE	1:1
A0	MODIFICATION	DRAW	DATE	.XXX ±0.03	.XXX° ±0.5°				DWG NO.	009