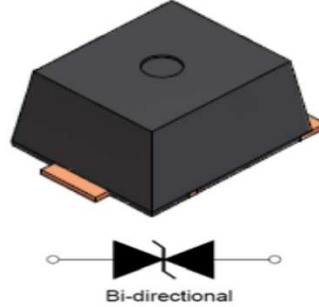


# SMEJ10-\*\*\*C

## 10KA BIDIRECTIONAL SURFACE MOUNT TRANSIENT VOLTAGE SUPPRESSOR

### FEATURES

- \* Plastic package has Underwriters Laboratory Flammability Classification 94V-0
- \* For surface mounted applications in order to optimize board space
- \* Low profile package
- \* Built-in strain relief
- \* Glass passivated junction
- \* Low slope resistance
- \* High power TVS with compact design in surface mount package
- \* High temperature soldering guaranteed:  
260°C/10 seconds,



### MECHANICAL DATA

**Case:** SME molded plastic over glass Die

**Mounting Position:** Any

**Weight:** 5.8g

### 1.DEVICES FOR BIPOLAR APPLICATIONS

For Bidirectional use C:

we declare that the material of product is halogen free (green epoxy compound).

### MAXIMUM RATINGS AND CHARACTERISTICS

Ratings at 25°C ambient temperature unless otherwise specified.

Single phase, half wave, 60Hz, resistive or inductive load.

For capacitive load, derate current by 20%.

RATING	SYMBOL	VALUE	UNITS
Peak current rating per 8/20μs IEC 61000-4-5 at T <sub>A</sub> =25°C, (Note 1)	IPP	10	KA
Operating Temperature Range	T <sub>J</sub>	-55 to +125	°C
Storage Temperature Range	T <sub>STG</sub>	-55 to +150	°C
V(BR) Temperature Coefficient		TYP 0.1	%/°C

NOTES:

1. Non-repetitive current pulse, per Fig. 3 and derated above TA=25°C per Fig. 2.

## SMEJ10-\*\*\*C

BI-DIRECTIONAL PART NUMBER	Device marking code	Standoff Voltage (V <sub>so</sub> ) (V)	BREAKDOWN VOLTAGE VBR (V) MIN. @I <sub>r</sub>	REAKDOW VOLTAGE VBR (V) MAX. @I <sub>r</sub>	TEST CURRENT I <sub>T</sub> (mA)	MAXIMUM CLAMPING VOLTAGE @IPP VC (V)	Peak Pulse Current (8/20) I <sub>pp1</sub> (A)	Peak Pulse Current (10/350) I <sub>pp2</sub> (A)	Max. Reverse Leakage (IR) @V <sub>so</sub> (μA)	TYP Capacitance 0 Bias 10kHz (nF)
SMEJ10-36C	10 36C	36	39	46	10	98	10000	800	10	10
SMEJ10-56C	10 56C	56	62	68	10	108	10000	1400	10	8.5
SMEJ10-58C	10 58C	58	64	70	10	110	10000	800	10	8.5
SMEJ10-66C	10 66C	66	72	80	10	120	10000	800	10	7.5
SMEJ10-76C	10 76C	76	85	95	10	140	10000	800	10	6.5
SMEJ10-80C	10 80C	80	89	100	10	150	10000	800	10	6.5
SMEJ10-86C	10 86C	86	95	105	10	157	10000	800	10	6.5

# SMEJ10-\*\*\*C

## 2. Ratings and Characteristic Curves ( TA = 25°C unless otherwise noted )

Fig. 1-V Curve Characteristics

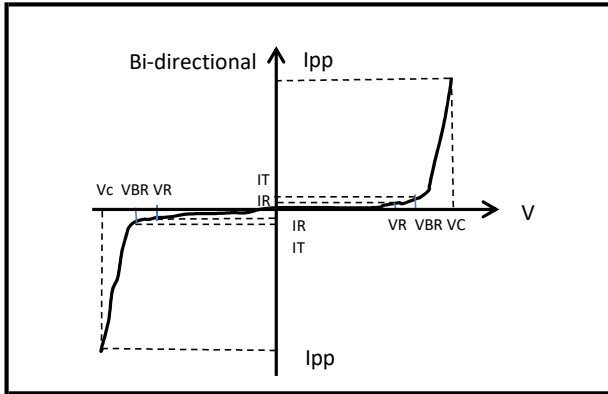


Fig. 2-Pulse Derating Curve

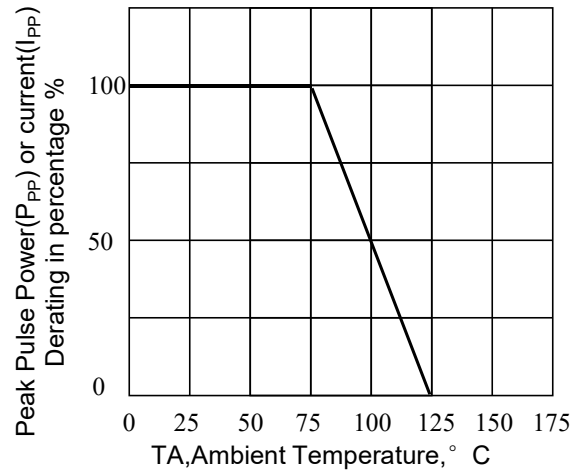


Fig. 3-Pulse Waveform (8/20)

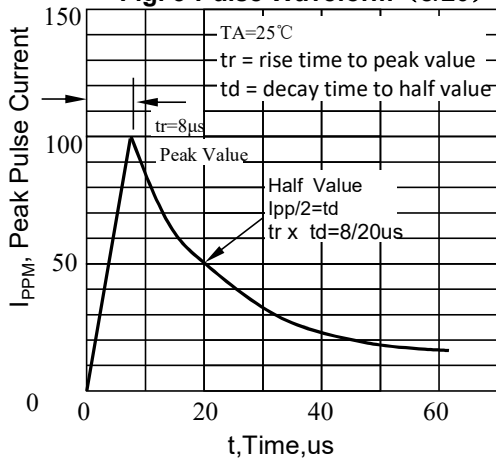
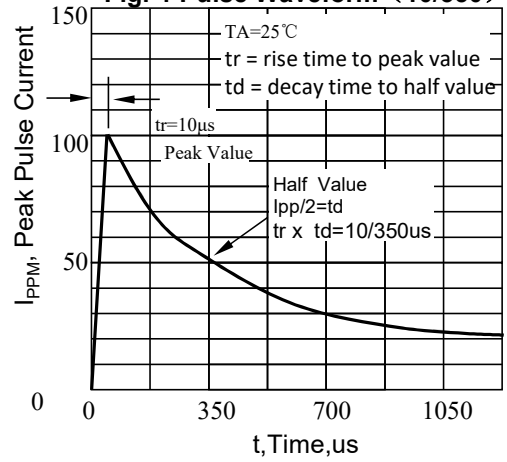
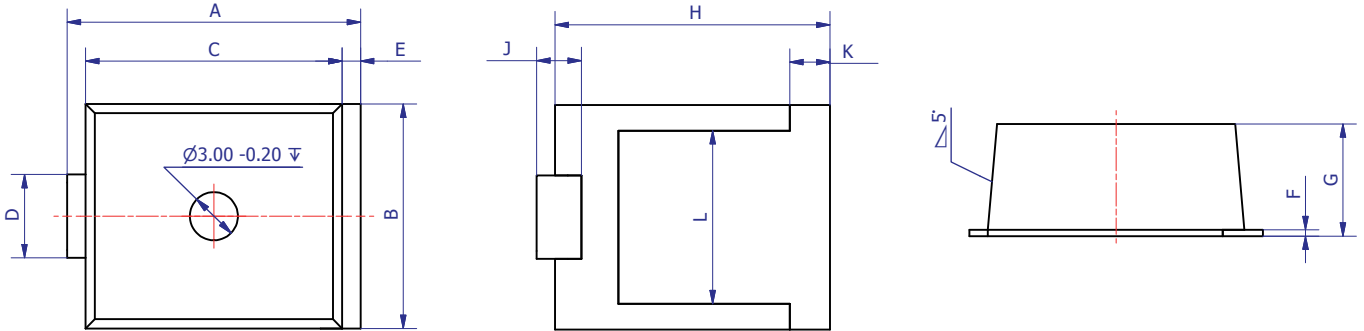


Fig. 4-Pulse Waveform (10/350)



## SMEJ10-\*\*\*C

### 3. dimension:



DIM	MILLIMETERS	
	MIN	MAX
A	17.82	18.72
B	13.43	15.09
C	15.50	16.05
D	4.89	5.65
E	0.85	1.45
F	0.37	0.45
G	6.94	7.24
H	16.65	17.20
J	2.20	3.20
K	1.85	2.85
L	10.17	11.17

## SMEJ10-\*\*\*C

### 4. Update Record

版次	更新记录	更新作者	更新日期
1	试用版	周杰	2018.04.06
2	正式版	谭志伟	2018.10.30
3	增加10/350uS IPP浪涌要求	谭志伟	2019.02.20
4	增加SMEJ10-56C	谭志伟	2019.11.07