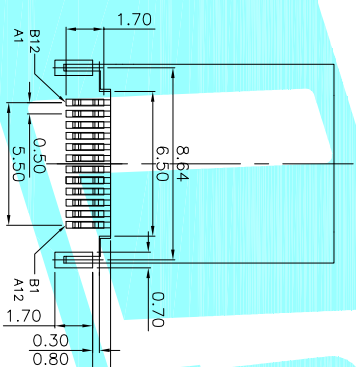
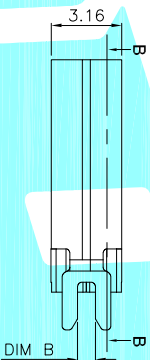
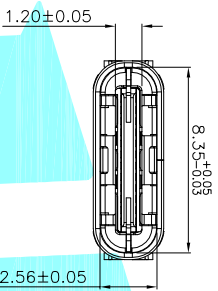
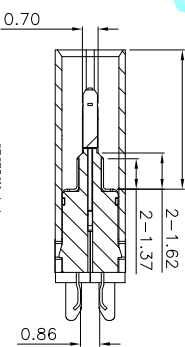
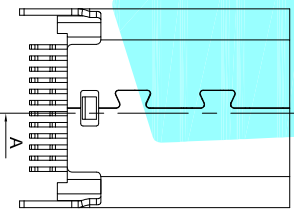


SECTION B-B  
SCALE 1:1



RECOMMENDED P.C.B. LAYOUT (T:1.00mm)  
TOLERANCE UNSPECIFIED ±0.05mm



SECTION A-A  
SCALE 1:1


A	B
1 GND	12 GND
2 TX1+	11 RX1+
3 TX1-	10 RX1-
4 VBUS	9 VBUS
5 CC1	8 SBU2
6 D+	7 D-
7 D-	6 D+
8 SBU1	5 CC2
9 VBUS	4 VBUS
10 RX2-	3 TX2-
11 RX2+	2 TX2+
12 GND	1 GND

PART NO	DIM A	DIM B	DIM C	DIM D
TYPE-C-31-M-21	10.5	0.8	6.25	12.15
	10.5	1.0	6.25	12.15
	10.5	1.2	6.25	12.15
	9.3	0.8	5.10	11.05
TYPE-C-31-M-20	9.3	1.0	5.10	11.05
	9.3	1.2	5.10	11.05

- 备注:
- 1.材料:
    - 1-1. 胶料: LCP+30%GF; UL94V-0; 颜色: 黑色.
    - 1-2. 端子: C7025-TM02,T=0.12mm; 镀层:50u"MIN. 接触区镀金+u"MIN; 焊接区镀金 1u"MIN.
    - 1-3. 中铜片: SUS301-1/2H,T=0.20mm 清洗.
    - 1-4. EMI: SUS301-H T=0.1 清洗.
    - 1-5. 外壳: SUS304-1/2H T=0.30 镀镍.
  - 2.电气特性:
    - 2-1. 电压及额定电流: DC 30V MAX.&3A
    - 2-2. 接触阻抗: 40mΩ MAX.
    - 2-3. 绝缘阻抗: 100MΩ MIN.
    - 2-4. 耐电压: 100V AC FOR 1 MINUTE.
    - 2-5. 操作温度: -30C~+80C
  - 3.机械特性:
    - 3-1. 插入力: 5-20N.
    - 3-2. 拔出力: 8-20N.
    - 3-3. 耐久: 10000次

③	Shell	—	1	SUS	Ni Plated
②	Contact	—	24	COPPER ALLOY	Au Plated
①	Housing	—	1	LCP	Black
ITEM	PART NAME	TER'NO.	QTY.	MATERIAL	FINISHING

APPROVALS  
DRAWN: JIANKUN.LIU 2018.08.01  
DATE: 2018.08.01  
TITLE: USB CONNECTOR  
ELECTRONICS CO.,LTD

ECN NO.	REV.	DATE.	DESCRIPTION.	CHANGE.	CHECK.	APPRO.
	A		NEW			
APPROVALS CHECKED: _____ TOLERANCES ARE: 30~以上 ±0.30, 10~30 ±0.25, 5~10 ±0.20, ~5 ±0.15, ANGLE ±2°, UNIT: mm, SCALE: 1:1, PROJ:  , SHEET 1 OF 1						