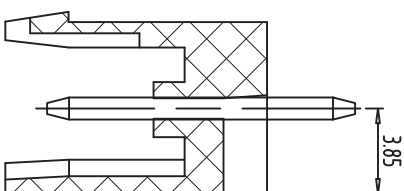
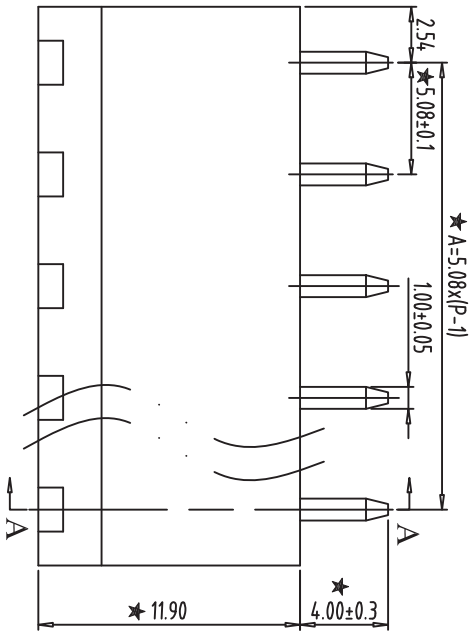
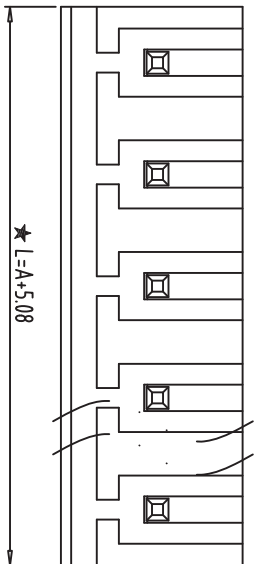
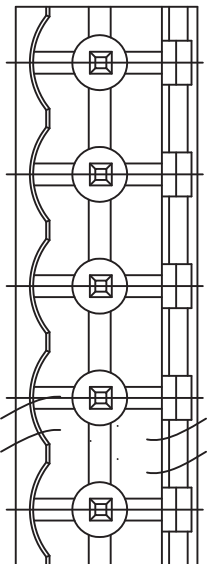


PCB LAYOUT
S=2:1



SECTION:A-A



- NOTES:
1. Rating:300V 15A ;
 2. Insulation Withstands Voltage: AC2000V/MIN
 3. Insulation Resistance: 500MΩ or more at DC500V
 4. Using Temperature Range: -40°C~+105°C
 5. "★" is the important dimension
 6. RoHS compliance

REV	CONTENT	CHK	DATE
V0.0	CONTENT	SK	2014/08/19

Total Pitch Tolerances		Nominal dimension range																																														
In mm		In mm																																														
0	to	0	to	0	to	0	to	0	to	0	to	0	to	0	to	0	to	0	to	0	to																											
30	to	53	to	70	to	90	to	115	to	150	to	250	to	350	to	500	to	700	to	900	to	1150	to	2000	to	2500	to	3200	to	100	to	150	to	100	to	150	to	100	to	150								
±0.18	to	±0.20	to	±0.25	to	±0.3	to	±0.35	to	±0.44	to	±0.60	to	±0.70	to	±0.85	to	±0.20	to	±0.25	to	±0.30	to	±0.35	to	±0.44	to	±0.55	to	±0.70	to	±0.80	to	±0.90	to	0.2	to	0.3	to	0.3	to	0.2	to	0.3	to	0.3	to	0.5

ITEM	NAME OF PART	NO. OF PART	Q'TY	MATERIAL	NOTE
DWG	SK	DATE	2014/08/19	SIZE	A4
CHK	DATE	SCALE	3:1	UNITS	mm
APP.	DATE	SCALE	3:1	UNITS	mm

深圳市金航标电子有限公司

WWW. BDS666. COM

KH-F400V-4P-5. 08G

0755-83044319