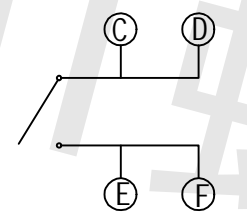
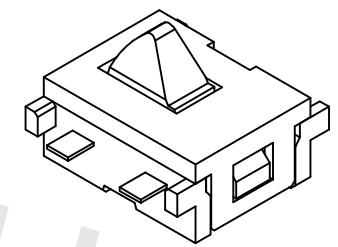
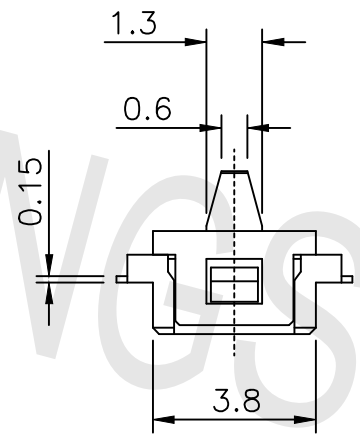
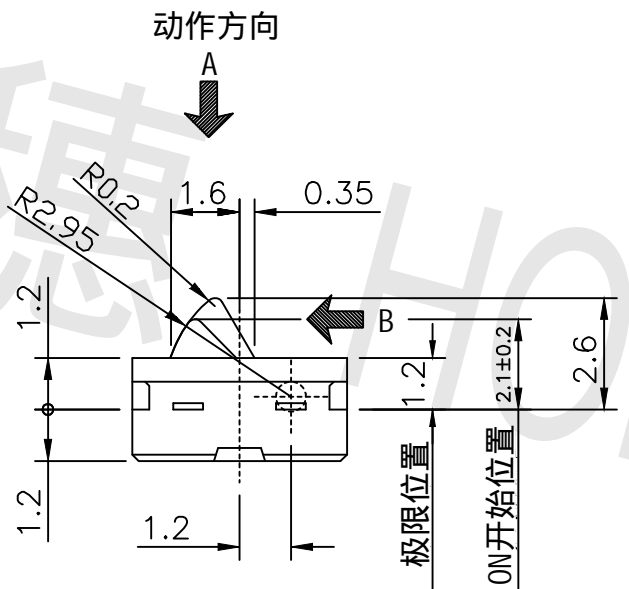
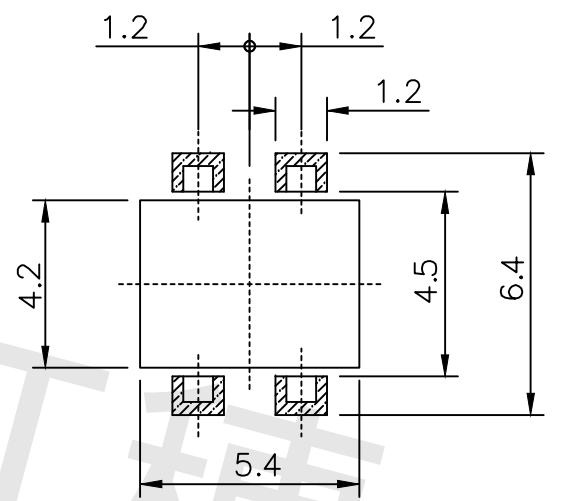


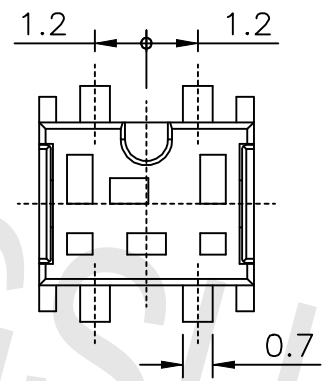
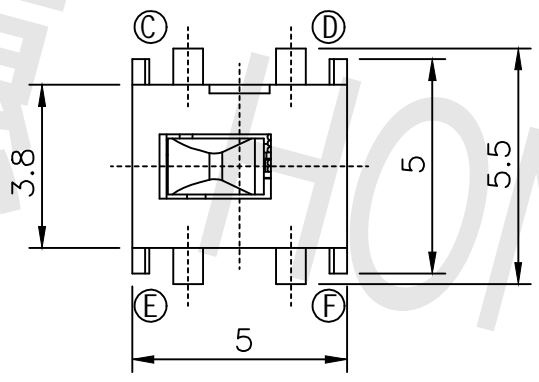
Version	ECM	Amendments	Modifier	Date Modified
A/0				



Circuit Diagram



P.C.B. Layout



- Remarks:
1. Rated current、Voltage: DC 5V 0.1~1.0mA
  2. Contact resistance:  $\leq 500m\Omega$
  3. Insulation resistance:  $\geq 100M\Omega$
  4. The intensity of operations:  $30 \pm 20gf$
  5. Contact stroke:  $0.50 \pm 0.20$
  6. Life requirements: 100000 times
  7. Withstand voltage: AC 100V 1 minute
  8. All materials comply with RoHS2.0 standards

NO.	PART NAME	MATERIAL	QTY	FINISHING	General Tolerance	DRAWN	Product Name			Detector Switch	
5	Cover	PPA	1	Black	$X \leq 1$	郑杰铭	Model Number			DS04C012-01	
4	Button	PA46	1	Black	$1 \leq X \leq 5$	徐丹丹	DATE			2019-08-31	
3	Spring	Beryllium bronze	1	Au Plating	$5 \leq X \leq 10$	杨书胜	SHEET	1:1	UNIT	mm	
2	Housing	PPA	1	Black	$X > 10$						
1	Terminal	Phosphor copper	4	Au Plating	ANGLE						
						ZHEJIANG HONGSUI PRECISION ELECTRONIC CO., LTD					