

### 1. 適用範圍 / SCOPE

此份規格書涵蓋 MSH 金屬板電流感測電阻元件相關規格。

This specification covers MSH, which are Metal Strap Current Sensing Resistor.

### 2. 產品型號/TYPE NUMBER

<b>MSH</b>	<b>2512</b>	<b>F</b>	<b>2W0</b>	<b>R010</b>	<b>F</b>	<b>*</b>
(1)	(2)	(3)	(4)	(5)	(6)	(6)

- (1) 產品系列號 / SERIES NUMBER : Ex.MSH2512 = 短電極/ Short electrode ; 兩端子 / two terminal ; 有側導 / side electrode / size “0.25x0.12”
- (2) 產品材質 / Material :M = 錳銅複合銅合金 / Complex alloy(MnCu,Cu)  
F = 鐵鉻鋁複合銅合金 / Complex alloy(FeCrAl,Cu)
- (3) 產品瓦特數 / Power Rating : Ex. 2W0=2.0 Watt ; 3W0=3.0Watt
- (4) 產品阻值 / Nominal Resistance Value : Ex. 10mΩ →R010
- (5) 元件電阻偏差值 / Resistance Tolerance : Ex. F=±1% ; D=±0.5%
- (6) 產品碼/Product code:Ex. I→ Electrode code ; blank→Original design

### 3. 產品尺寸 / PRODUCT DIMENSIONS

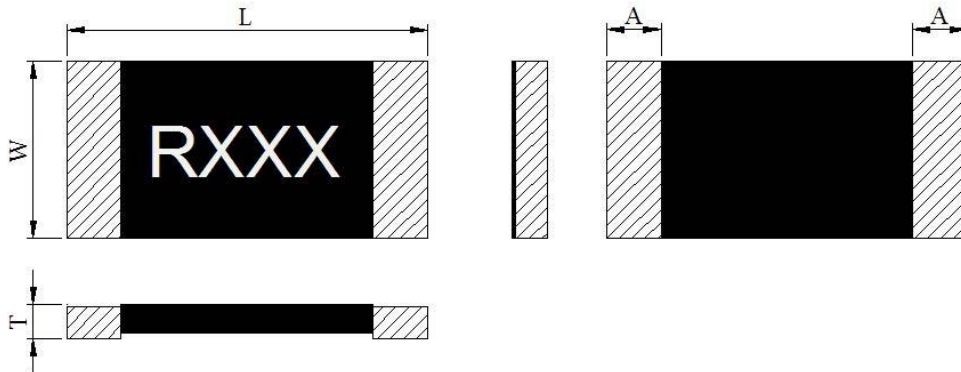


圖 1 / Fig.1

Unit(mm)

Part Number	W	L	T	A
MSH2512M2W0-series R001*I	3.20±0.30	6.40±0.30	0.90±0.30	1.90±0.35
MSH2512*2W0-series R002*~R050*	3.20±0.30	6.40±0.30	0.90±0.30	0.80±0.35
MSH2512*3W0-series R001*~R004*	3.20±0.30	6.40±0.30	1.10±0.30	0.80±0.35
MSH2512F3W0-series R005*U~R050*U	3.20±0.30	6.40±0.30	0.90±0.30	0.80±0.35

#### 4. 產品結構及使用材料說明(參考圖 2) / STRUCTURE & MATERIAL (Ref to Fig.2)

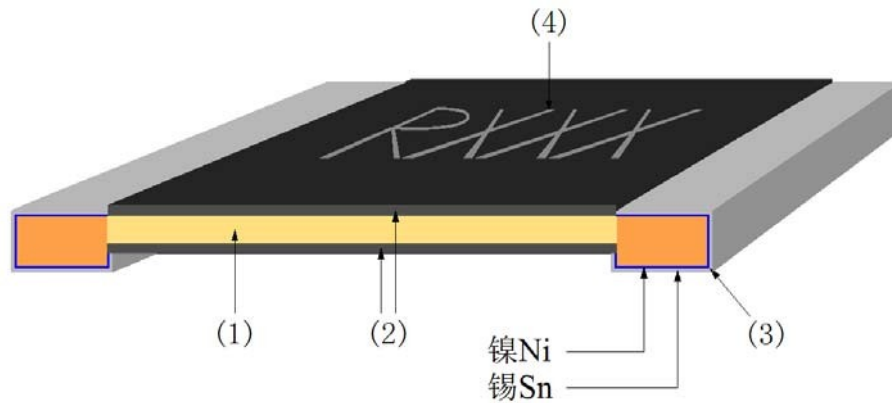


圖 2 / Fig.2

4.1 電阻本體 / Resistive element(1) : M = 錳銅複合銅合金 / Complex alloy(MnCu,Cu)

F = 鐵鉻鋁複合銅合金 / Complex alloy(FeCrAl,Cu)

4.2 保護防焊層 / Protective coating(2) : 防火級環氧樹脂,符合 UL- 94-V0 要求 (黑色) /  
Flame-retardant epoxy, meets UL- 94-V0 requirements (Black)

4.3 電鍍層 / Plating layer(3) : 錫、鎳 / Sn、Ni

4.4 文字標記 / Marking (4) : 鐳射打標 / Laser marking

#### 5. 電氣特性 / ELECTRICAL CHARACTERISTICS

Part Number	Resistance Value (mΩ)	Power Rating (Watt)	Resistance Tolerance (%)	TCR (ppm)	Material
MSH2512M2W0-series R001*I	1	2.0	±1%(F)	±100	R001:MnCu
MSH2512*2W0-series R002*~R029*	2~29	2.0	±1%(F)	±50	R002~R004:MnCu R005~R029:FeCrAl
MSH2512F2W0-series R030*~R050*	30~50	2.0	±1%(F)	±50	R030~R050:FeCrAl
MSH2512M3W0-series R001*	1	3.0	±1%(F)	±100	R001:MnCu
MSH2512*3W0-series R002*~R004*	2~4	3.0	±1%(F)	±50	R002~R003:MnCu R004:FeCrAl
MSH2512F3W0-series R005*U~R050*U	5~50	3.0	±1%(F)	±50	R005~R050:FeCrAl

規格外阻值可依客戶需求提供 / We can provide other resistance value per request

6. 產品特性及信賴性測試規範 / PRODUCT CHARACTERISTICS AND RELIABILITY TEST STANDARD

測試方法 Parameter	條件 Conditions	允收標準 Requirements
瞬間過載測試 / Short Time Over Load	$P = 5.0P_r$ ; $T = 25 \pm 2^\circ\text{C}$ , $t = 5\text{sec}$ .	$\pm(1.0\% + 0.5\text{m}\Omega)$ IEC60115-1 4.13
高溫測試 / High Temp. Exposure	$T = +170 \pm 2^\circ\text{C}$ ; $t = 1000\text{h}$	$\pm(1.0\% + 0.5\text{m}\Omega)$ IEC60115-1 4.25
低溫測試 / Low Temp. Storage	$T = -55 \pm 2^\circ\text{C}$ ; $t = 1000\text{h}$	$\pm(1.0\% + 0.5\text{m}\Omega)$ IEC60115-1 4.25
濕度負載壽命測試 / Moisture Load Life (60°C、95%RH)	$V_{\text{test}} = V_{\text{max}}$ ; $T = 60 \pm 2^\circ\text{C}$ ; $\text{RH} = 95\%$ ; $t = 90\text{min ON}$ , $30\text{min OFF}$ , $1000\text{h}$	$\pm(2.0\% + 0.5\text{m}\Omega)$ IEC60115-1 4.25
冷熱衝擊測試 / Thermal Shock	$[-55^\circ\text{C } 30\text{min.} \rightarrow \text{R.T. } 3\text{min.} \rightarrow +155^\circ\text{C } 30\text{min.}$ $\rightarrow \text{R.T. } 3\text{min.}]$ , 100 個連續循環 / 100Cycles	$\pm(1.0\% + 0.5\text{m}\Omega)$ IEC60115-1 4.19
在 70°C 下負載壽命測試 / Load Life at 70°C	$V_{\text{test}} = V_{\text{max}}$ ; $T = 70 \pm 2^\circ\text{C}$ ; $t = 90\text{min ON}$ , $30\text{min OFF}$ , $1000\text{h}$	$\pm(2.0\% + 0.5\text{m}\Omega)$ IEC60115-1 4.25
可焊性測試 / Solderability	浸入錫爐 / Dip into solder at $T = 245 \pm 5^\circ\text{C}$ , $t = 3 \pm 0.5\text{sec}$ .	錫涵蓋面積 / The covered area $> 95\%$ IEC60115-1 4.17
抗焊熱性測試 / Resistance to Solder Heat	經熱風式迴焊爐 / Through Reflow $T = 275 \pm 5^\circ\text{C}$ , $t = 20 \pm 1\text{sec}$ .	$\pm(1.0\% + 0.5\text{m}\Omega)$ IEC60115-1 4.18
機械衝擊測試 / Mechanical Shock	加速度 $a = 100\text{G}$ , 振幅時間 $t = 11\text{ms}$ , 5 個衝擊 $a = 100\text{G}$ , $t = 11\text{ms}$ , 5 times shock	$\pm(1.0\% + 0.5\text{m}\Omega)$ IEC60115-1 4.21
基板彎曲測試 / Substrate Bending	兩支撐點間距 / Span between fulcrums : $90\text{mm}$ ; 振幅 / Bend Width: $2\text{mm}$ ; 測試板 / Testboard: 玻璃纖維板 / Glass Epoxy Board ; 厚度 / Thickness = $1.6\text{mm}$	$\pm(1.0\% + 0.5\text{m}\Omega)$ IEC60115-1 4.33

7. 環境特性 / ENVIRONMENTAL CHARACTERISTIC

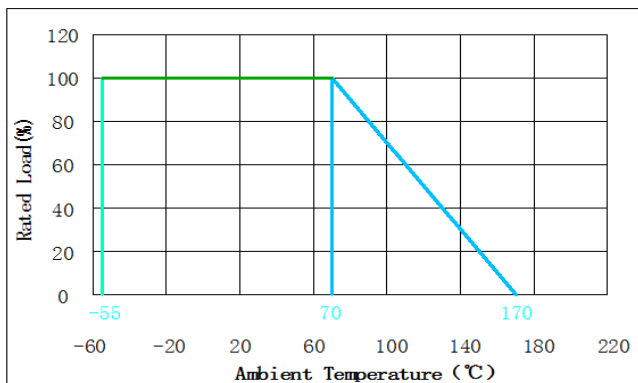
7-1 操作溫度範圍:  $-55^\circ\text{C} \sim 170^\circ\text{C}$  / Operating Temperature:  $-55^\circ\text{C} \sim 170^\circ\text{C}$

額定功率溫度衰變曲線 / Typical Thermal Derating Curve

額定功率乃指於  $70^\circ\text{C}$  以內可連續滿額功率使用的術語。

下圖為當操作溫度高於  $70^\circ\text{C}$  時的可使用功率衰減曲線。

Power rating is based on continuous full load operation at rated ambient temperature of  $70^\circ\text{C}$ . For resistors operated at ambient temp. in excess of  $70^\circ\text{C}$ , the max. load shall be derated in accordance with the following curve.



## 7-2 存儲條件 / STORAGE CONDITIONS

在溫度+10°C~40°C、相對濕度 $\leq 75\%$ 的密閉條件下可存放2年。 /

Under airtight in temperature+10°C~40°C、relative humidity  $\leq 75\%$  can store 2 years.

在溫度+10°C~60°C、相對濕度為95%的非露天下最多可存放30天。 /

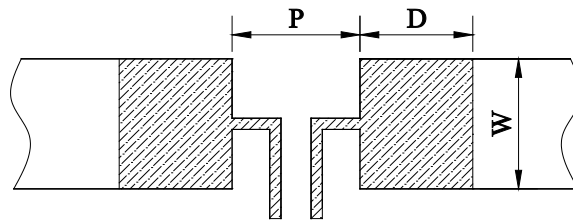
Without dew in temperature+10°C~60°C、relative humidity be 95% maximum value for 30days.

## 8. 焊錫墊尺寸及焊接條件 / SOLDER PAD SIZE AND WELDING CONDITIONS

8-1 建議如下圖焊接方式焊接，並滿足所要求的尺寸。 / Propose that the following picture installation way is installed, and satisfied the required size.

Part Number	P	W	D	Loading
MSH2512M2W0-series R001*1	1.50mm	3.57mm	2.95mm	2.0w
MSH2512*2W0-series R002~R050	3.18mm	3.57mm	2.11mm	2.0w
MSH2512*3W0-series R001~R050	3.18mm	3.57mm	2.11mm	3.0w

loading : 適用於本司建議焊墊設計並使用於限定穩定電流下 /  
suit for specific pad layout and specific steady current



## 8-2 建議客戶焊接參數 / Recommended Customer Soldering Parameters

### 8-2-1 波峰焊溫度曲線 / Wave solder Temperature condition (圖3 / Fig.3)

預熱段/ Preheating : 100°C~130°C, max.100 sec.

焊錫段/ Soldering: 250°C~265°Cmax. 10 sec.

允許最高溫度/ Maximum temperature : 260 $\pm$ 5°C, max. 10sec.

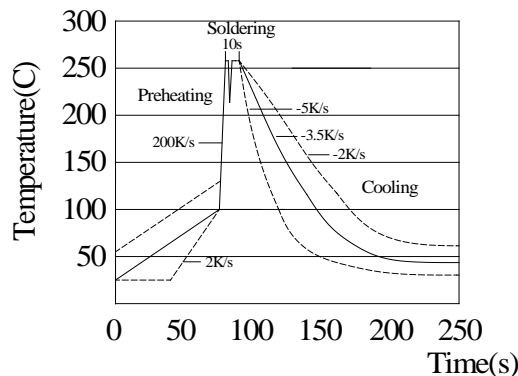


圖 3 / Fig.3

### 8-2-2 回流焊溫度曲線 / Solder reflow Temperature condition (圖 4 / Fig.4)

預熱段 / Preheating :  $145 \pm 15^{\circ}\text{C}$ , max.120 sec.

焊錫段 / Soldering : min.  $220^{\circ}\text{C}$ , max. 60 sec.

允許最高溫度 / Maximum temperature :  $260 \pm 5^{\circ}\text{C}$ , max. 10sec.

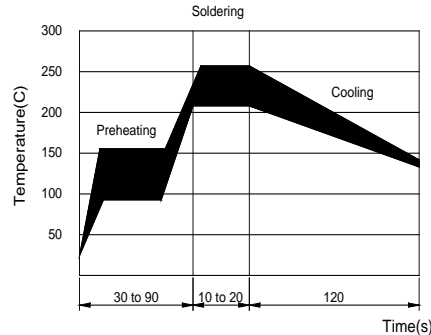


圖 4 / Fig.4

### 8-2-3 允許烙鐵焊接條件(熱風設備) / Rework temperature (hot air equipment) : $350^{\circ}\text{C}$ , 3~5seconds

### 8-2-4 焊接方法建議 / Recommended reflow methods

焊接熱源方式可用紅外線, 熱蒸氣, 熱風. / IR, vapor phase oven, hot air oven

如果焊錫溫度超過允許最高溫度, 則產品本身會有功能損壞的疑慮. / If reflow temperatures exceed the recommended profile, devices may not meet the performance requirements.

## 9. 批量生產後出貨測試項目 / Lot ACCEPTANCE TEST REQUIREMENTS

每一批生產均須作入庫檢驗, 每一批生產單量不可超過500Kpcs. /

Qualification shall consist of passing a program of following tests. Parts shall be pulled from each lot and maximum lot quantity shall be within 500Kpcs.

### 9-1 外觀 / Visual

方法 / Procedure : 利用放大鏡進行檢查 / Visual

標準 / Acceptance Criteria : 不能有髒污、不潔、文印錯誤、破損等 / No parts are outstandingly stained

### 9-2 尺寸 / Dimensions

方法 / Procedure : 使用合適且經校正的尺規 / As appropriate, calipers, micrometers, optical comparator, or approved gages

標準 / Acceptance Criteria : 尺寸均在規定標準範圍內 / No parts outside specific dimensions

### 9-3 單體元件電阻(Ro) / Resistance (Ro)

方法 / Procedure : 在  $25^{\circ}\text{C}$  下利用四線量測技術量測之 / Resistance shall be measured with  $25^{\circ}\text{C}$  in the 4-wire resistance test

標準 / Acceptance Criteria : 電阻值均在規定標準範圍內 / The resistance of the test device shall be within the limits specified

#### 9-4 電阻溫度係數 / TCR

方法 / Procedure : 利用四線法量測出元件分別在 25°C 及 125°C 下的電阻值, 並將其帶入下面公式中即可得出 TCR 值 / Getting the sampling device resistance values measured in 25°C and 125°C and put them in to the following equation to calculate the TCR

標準 / Acceptance Criteria : 溫度係數值均在規定標準範圍內 / All parts must within the specific  
 $TCR = (R_b - R_a) / R_a \times 1 / (T_b - T_a) \times 10^6$

#### 9-5 絕緣電阻 / Insulation resistance (Ri)

方法 / Procedure : 利用絕緣測試儀量測 / Resistance between protective layer and resistive shall be measured by high ohm meter

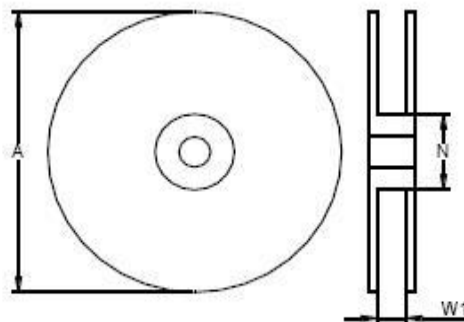
標準 / Acceptance Criteria : 防焊層與電阻本體絕緣電阻至少高於 100MΩ / The resistance of the test device shall over 100MΩ

### 10. 包裝訊息 / PACKAGING INFORMATION

#### 10-1 包裝數量、重量 / QUANTITY & WEIGHT

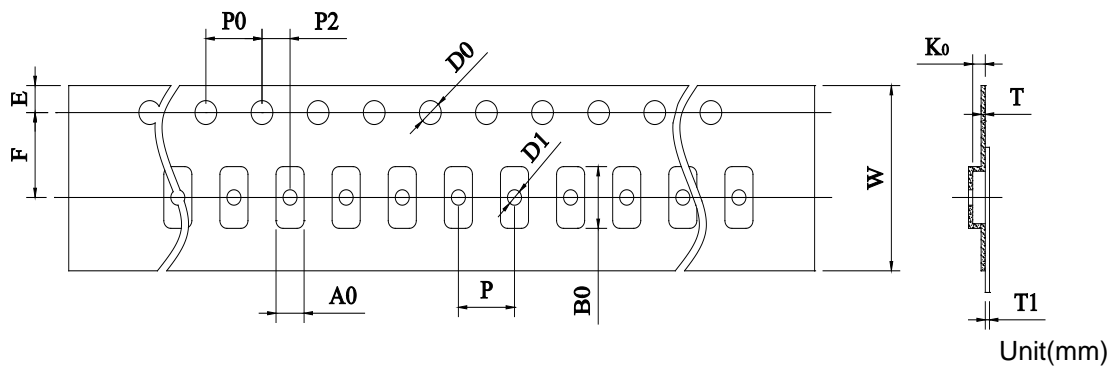
型號 / Type Number	數量 / Quantity (pcs)
MSH2512*2W0-series R001*I~R050*	4,000
MSH2512*3W0-series R001*~R004*	3,000
MSH2512F3W0-series R005*U~R050*U	4,000

#### 10-2 捲輪規格 / Reel & Tape specifications



型號 / Type Number	A±5 (mm)	N±2 (mm)	W1±1 (mm)
MSH2512	178	60	13





MSH2512*2W0-series R001*I~R050*							
W	12.00 ± 0.30	P0	4.00 ± 0.10	P	4.00 ± 0.10	P2	2.00 ± 0.10
A0	3.40 ± 0.20	B0	6.75 ± 0.20	D0	1.55 ± 0.10	F	5.50 ± 0.10
E	1.75 ± 0.10	T	0.20 ± 0.10	T1	Max. 0.1	K0	1.00 ± 0.20

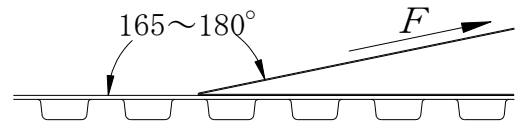
MSH2512*3W0-series R001*~R004*							
W	12.00 ± 0.30	P0	4.00 ± 0.10	P	4.00 ± 0.10	P2	2.00 ± 0.10
A0	3.40 ± 0.20	B0	6.75 ± 0.20	D0	1.55 ± 0.10	F	5.50 ± 0.10
E	1.75 ± 0.10	T	0.20 ± 0.10	T1	Max. 0.1	K0	1.30 ± 0.20

MSH2512F3W0-series R005*U~R050*U							
W	12.00 ± 0.30	P0	4.00 ± 0.10	P	4.00 ± 0.10	P2	2.00 ± 0.10
A0	3.40 ± 0.20	B0	6.75 ± 0.20	D0	1.55 ± 0.10	F	5.50 ± 0.10
E	1.75 ± 0.10	T	0.20 ± 0.10	T1	Max. 0.1	K0	1.00 ± 0.20

### 10-3 密封膠膜剝離強度要求 / Peeling Strength of Seal Tape

F = 剝離強度 : 0.1 – 1.0N ( 10 - 100gf )

F = Peeling Strength: 0.1 – 1.0N (10 - 100gf)



## 11. 其他 / OTHERS

11-1 如果在使用中有超出本規格書的要求，必須經由雙方協商確認。 / In the event that an impropriety is found beyond this specification , it shall be fixed by mutual agreement between the parties.

11-2 如果本規格書有不適當的情況，必須通過雙方協商並由本公司修改。 / In the event that an impropriety is found in this specification , Juneway Electronic Technology Co., Ltd. shall amend it by mutual agreement between the parties.