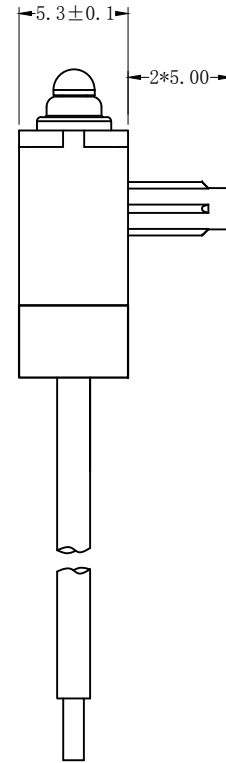
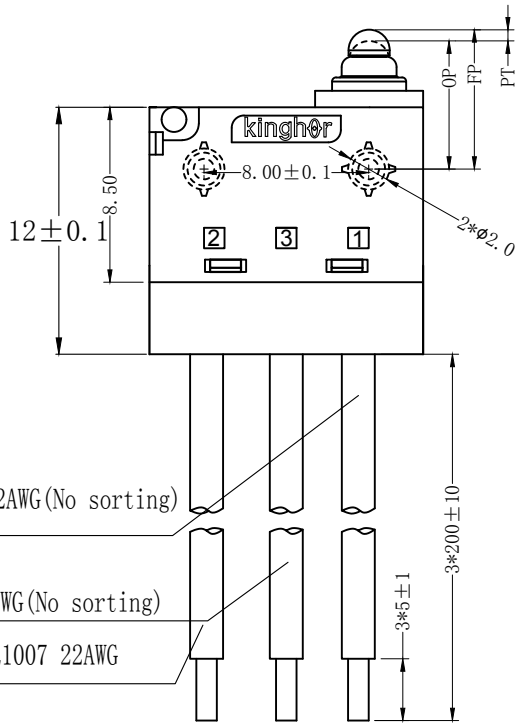
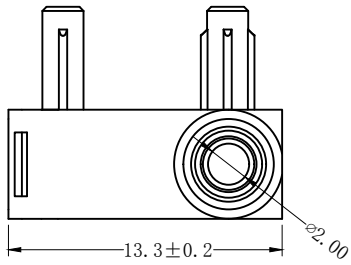


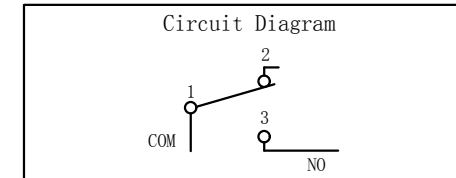
REV	MARK	DESCRIPTION	DRAFTED. BY	DATE



COM: Black UL1007 22AWG(No sorting)

NO: Blue UL1007 22AWG(No sorting)

NC: Grey UL1007 22AWG



CHARACTERISTICS	
OPERATING FORCE (OF):	150gf Max.
RELEASE FORCE (RF):	30gf Min.
OPERATING POSITION:	6.4 ± 0.3mm.
PRE TRAVEL:	1.30mm Max.
DIFFERENTIAL TRAVEL:	0.25mm Max.
FREE POSITION:	7.20mm Max.

ELECTRICAL DATA	
RATING	OPERATING LIFE
3A 12VDC	100,000 CYCLES
0.1A 48VDC 125/250VAC	100,000 CYCLES

MECHANICAL LIFE	500,000 CYCLES
GAP TYPE	MICRO
OPERATING TEMP	-25°C ~ +85°C
WATERPROOF	IP67

OUTLINE DRAWING			
TITLE	H3 SERIES MICRO SWITCH		
MODEL	H3-D2		
PART NO.	H3-D2-1D00W1-2-200		
DRAFTED BY	Bing Wang	DATE	2020-12-9
CHECKED BY	Hua Bai	DATE	2020-12-9
APPROVED BY	Hong Chen	DATE	2020-12-9

TOLERANCE UNLESS OTHERWISE SPECIFIED						
≤3	1~3	3~10	10~30	30~100	100~200	ANGLE
±0.2	±0.3	±0.4	±0.6	±1.0	±1.5	±3.0°
					SCALE	
					UNIT	mm
					VERSION REV	
					A1	

KINGHOR
SWITCHES AND CONTROL EXPERT