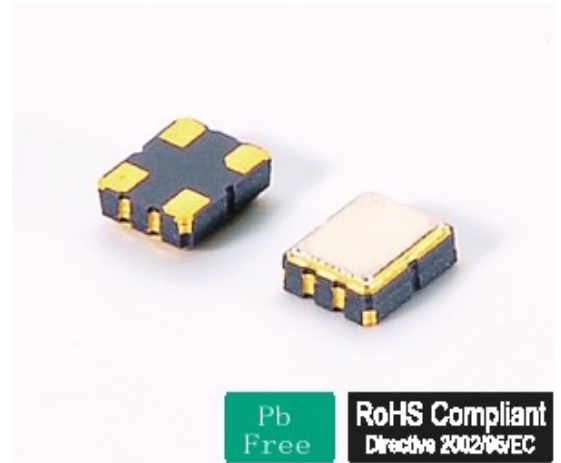


● Feature 特性

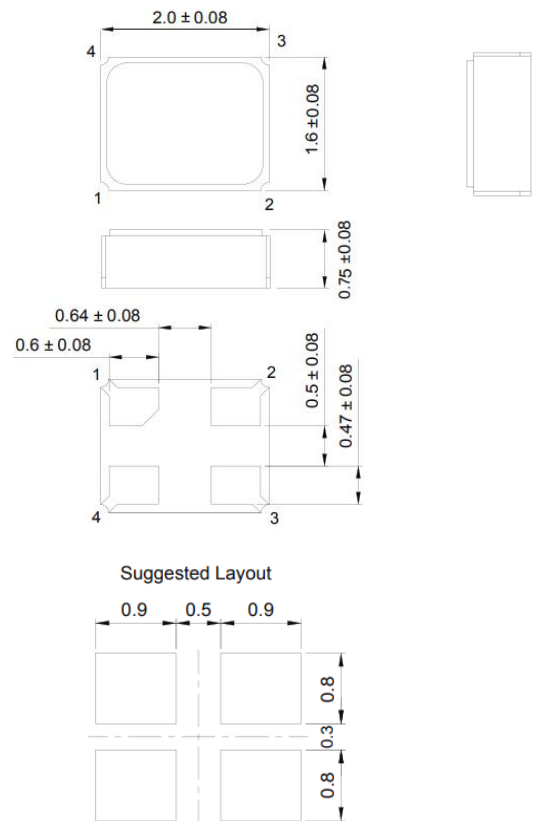
- ◆ 高频率、高可靠性 High frequency, Reliability
- ◆ 表面装贴回流焊 IR Re-flow
- ◆ 三态输出 Tri-state Function
- ◆ 频率范围宽 Wide frequency range
- ◆ TTL/HCMOS兼容 TTL/HCMOS compatible

● Electrical specifications 电气参数

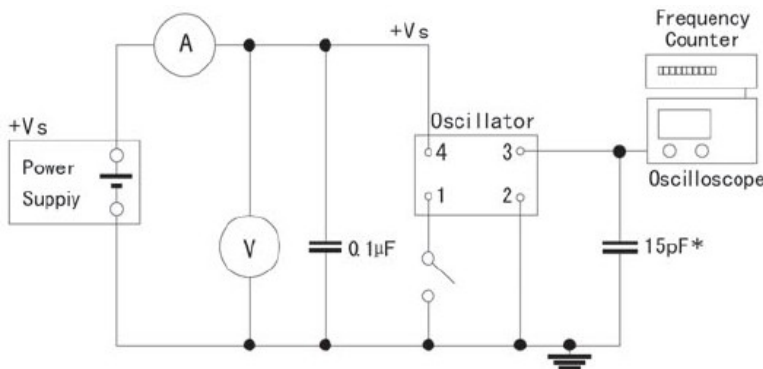
型号	Holder Type	T021	2016
频率范围	Frequency Range	2.000MHz~54.000MHz	
频率偏差	Frequency Toleranc ( $\Delta F$ ) at25°C	$\pm 25\text{ppm} \sim \pm 50\text{ppm}$	
输入电压	Supply Voltage	2.0V~5.0V $\pm 10\%$	
工作温度范围	Operating Temperature Range	$-20^\circ\text{C} \sim +70^\circ\text{C}$ to $-40^\circ\text{C} \sim +85^\circ\text{C}$	
储存温度范围	Storage Temperature Range	$-20^\circ\text{C} \sim +60^\circ\text{C}$ to $-55^\circ\text{C} \sim +125^\circ\text{C}$	
占空比	Symmetry	40/60 Standard	
输出	Output Load 5.0V	10 TTL or 15pF HCMOS	
	Output Load 2.0V	10 TTL or 15pF HCMOS	
消耗电流	Current Consumption 5.0V	1-36MHz=15mA Max	
		36-50MHz=20mA Max	
	Current Consumption 2.0V	1-36MHz=10mA Max	
		36-50MHz=15mA Max	
上升/下降时间	Rise/fall Time	10nS Max	



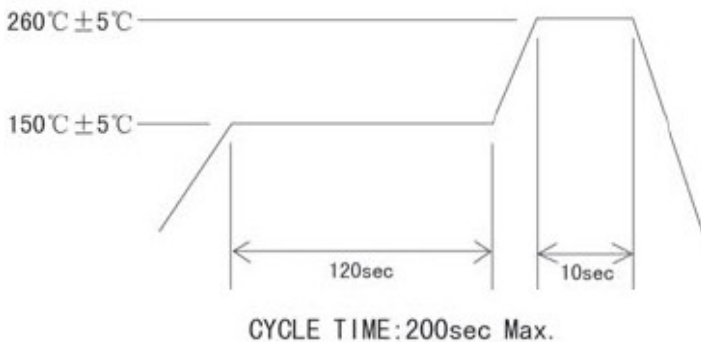
● Mechanical Dimensions 外型尺寸



● Test Circuit 测试电路



● Reflow condition 回流焊条件



PAD FUNCTION:

- 1: ENABLE CONTROL
- 2: GND
- 3: OUT
- 4: VDD