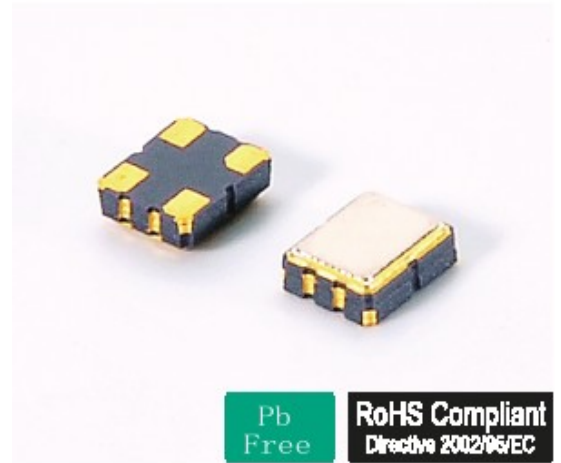


● Feature 特性

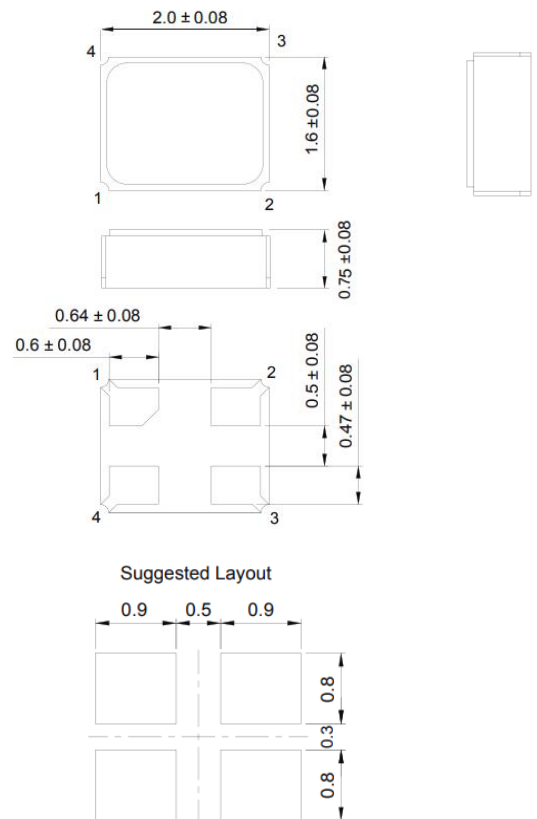
- ◆ 高频率、高可靠性 High frequency, Reliability
- ◆ 表面装贴回流焊 IR Re-flow
- ◆ 三态输出 Tri-state Function
- ◆ 频率范围宽 Wide frequency range
- ◆ TTL/HCMOS兼容 TTL/HCMOS compatible

● Electrical specifications 电气参数

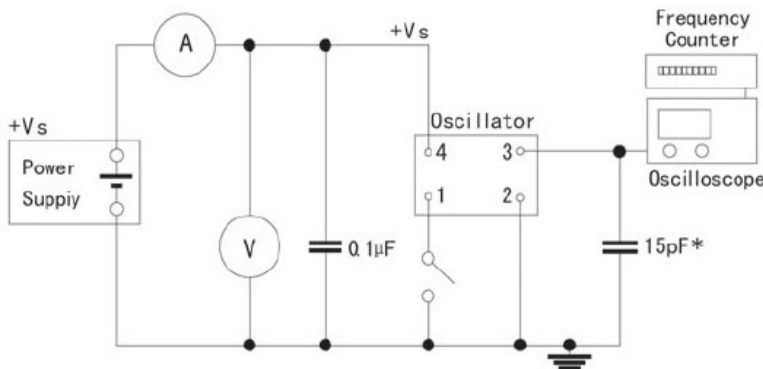
型号	Holder Type	T021	2016
频率范围	Frequency Range	2.000MHz~54.000MHz	
频率偏差	Frequency Toleranc (ΔF) at25°C	±25ppm~±50ppm	
输入电压	Supply Voltage	2.0V~5.0V ±10%	
工作温度范围	Operating Temperature Range	-20°C~+70°C to -40°C~+85°C	
储存温度范围	Storage Temperature Range	-20°C~+60°C to -55°C~+125°C	
占空比	Symmetry	40/60 Standard	
输出	Output Load 5.0V	10 TTL or 15pF HCMOS	
	Output Load 2.0V	10 TTL or 15pF HCMOS	
消耗电流	Current Consumption 5.0V	1-36MHz=15mA Max	
		36-50MHz=20mA Max	
	Current Consumption 2.0V	1-36MHz=10mA Max	
		36-50MHz=15mA Max	
上升/下降时间	Rise/fall Time	10nS Max	



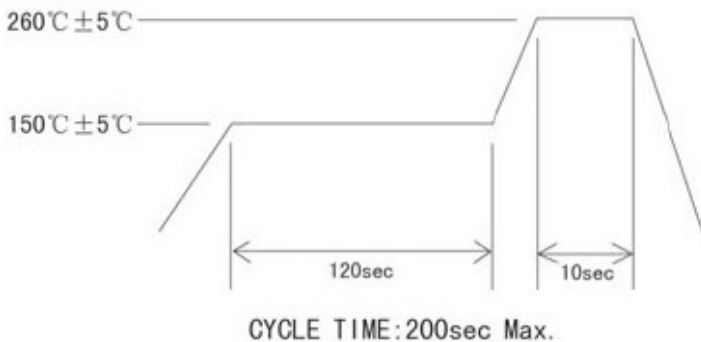
● Mechanical Dimensions 外型尺寸



● Test Circuit 测试电路



● Reflow condition 回流焊条件



PAD FUNCTION:
1: ENABLE CONTROL
2: GND
3: OUT
4: VDD