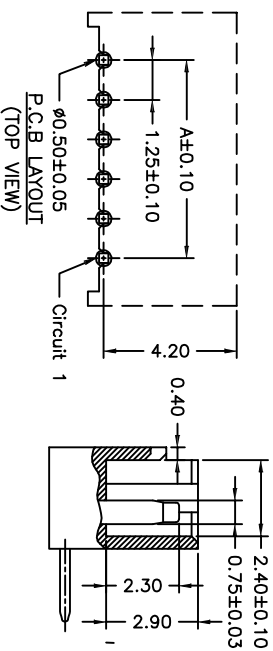
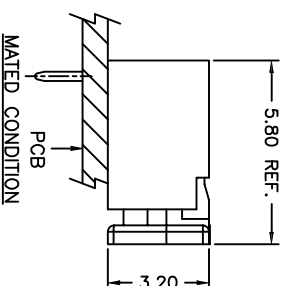
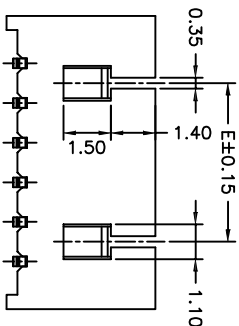
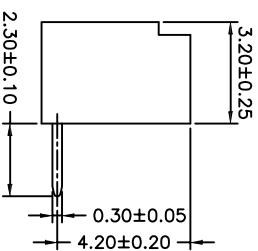
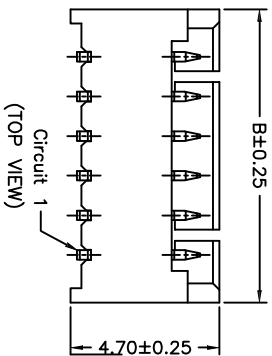
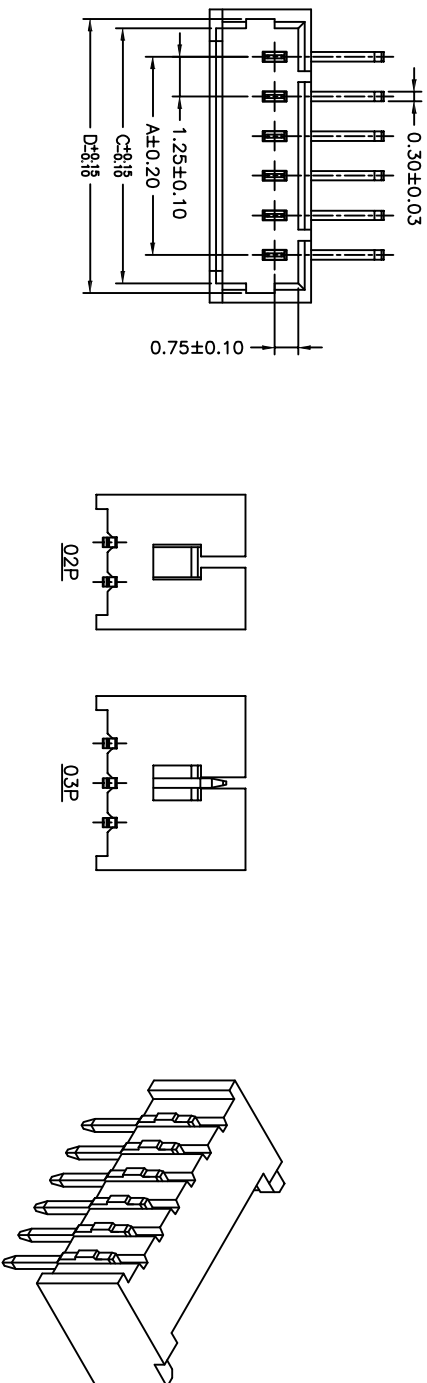


SPECIFICATIONS
 Current Rating: 1A AC,DC
 Voltage Rating: 125V AC,DC
 Temperature Range: -25°C ~ +85°C
 Contact Resistance: 20mΩ Max.
 Insulation Resistance: 100MΩ Min.
 Withstanding Voltage: 500V AC/minute
 Pin Mat'l: Phosphor Bronze/Tin-plated



Circuit No.	Dimensions				
	A	B	C	D	E
02P	---	4.25	3.05	3.65	---
03P	2.50	5.50	4.30	4.90	---
04P	3.75	6.75	5.55	6.15	2.50
05P	5.00	8.00	6.80	7.40	3.75
06P	6.25	9.25	8.05	8.65	5.00
07P	7.50	10.50	9.30	9.90	6.25
08P	8.75	11.75	10.55	11.15	7.50
09P	10.00	13.00	11.80	12.40	8.75
10P	11.25	14.25	13.05	13.65	10.00
11P	12.50	15.50	14.30	14.90	11.25
12P	13.75	16.75	15.55	16.15	12.50
13P	15.00	18.00	16.80	17.40	13.75
14P	16.25	19.25	18.05	18.65	15.00
15P	17.50	20.50	19.30	19.90	16.25
16P	18.75	21.75	20.55	21.15	17.50
17P	20.00	23.00	21.80	22.40	18.75
18P	21.25	24.25	23.05	23.65	20.00

APPROVALS		DATE	TITLE: 1.25mm Crimp Style Connector	
DRAWN	ZHIWEI, CHEN	2015.07.07	PART NO. GP01-1250WR-NP	
CHECKED			SCALE: 1:1	
APPROVALS			UNIT: mm	
TOLERANCES ARE			DRAWING NO.	
30~ØL	±0.30	ANGLE	PROJ.	
10~30	±0.20		SHEET 1 OF 1	
5~10	±0.15	±2°		
~5	±0.10			
ECN NO.	REV.	DATE.	DESCRIPTION.	
	A		NEW	
			CHANGE.	
			CHECK.	
			APPRO.	

GEPU 歌普