

Pin數	2P	3P	4P	5P	6P	7P	8P	9P	10P	11P	12P	13P	14P	15P
尺寸 A	1.50	3.00	4.50	6.00	7.50	9.00	10.50	12.00	13.50	15.00	16.50	18.00	19.50	21.00
尺寸 B	4.50	6.00	7.50	9.00	10.50	12.00	13.50	15.00	16.50	18.00	19.50	21.00	22.50	24.00

技術參數 SPECIFICATIONS

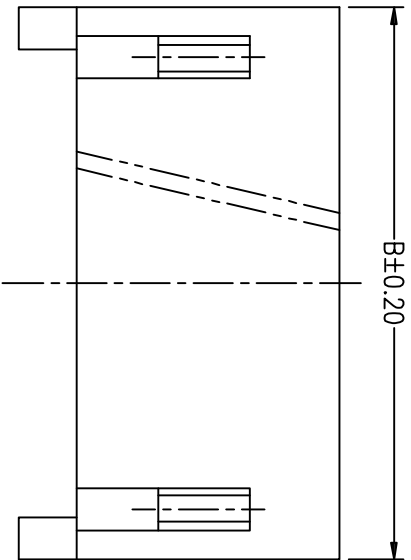
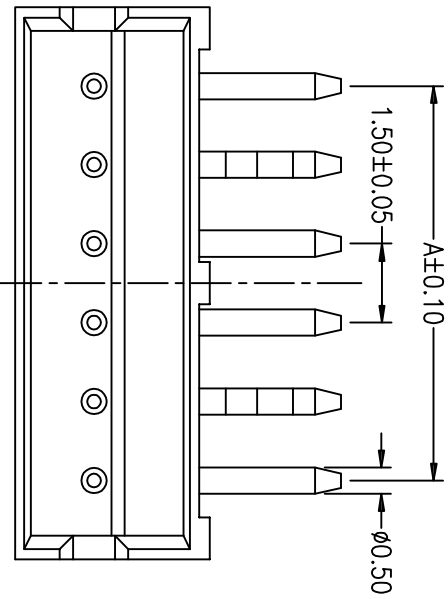
- ◆ 接腳數: 2-15 Poles: 2-15
- ◆ 適用線規: AWG#28-#22  
Applicable: AWG#28-#22
- ◆ 額定電壓: AC/DC, 150V (有效值)  
Voltage rating: AC/DC, 150V (rms)
- ◆ 額定電流: 1.0A, AC/DC  
Current rating: 1.0A, AC/DC
- ◆ 耐壓值: 500V AC/minute  
Withstand voltage: 500V AC/minute
- ◆ 工作溫度: -25°C ~ +85°C  
Working Temperature: -25°C ~ +85°C
- ◆ 絕緣電阻: > 1000 MΩ  
Insulation resistance: > 1000 MΩ
- ◆ 接觸電阻: ≤ 0.02 Ω  
Contact resistance: ≤ 0.02 Ω

材料 MATERIAL

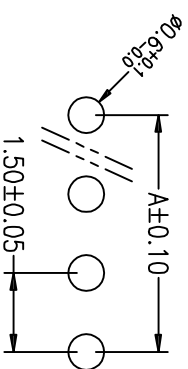
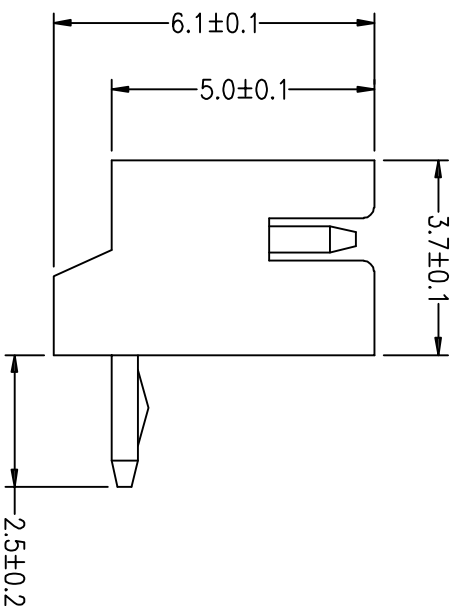
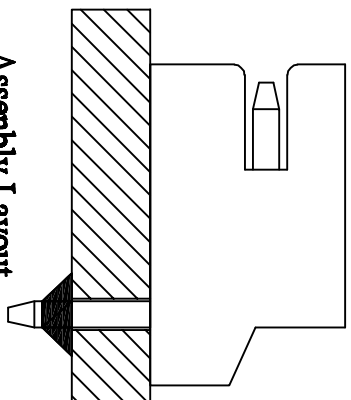
- ◆ 插針: 黃銅 (PIN: Bronze)
- ◆ A殼: Nylon (Wafer: Nylon)

包裝方式: PACKAGE

- ◆ 管裝 Pipe Package
- ◆ 袋裝 Bag Package



Assembly Layout



P.C.B Layout

APPROVALS		DATE	
DRAWN	ZHIWEI, CHEN	2015.07.07	
CHECKED			
TOLERANCES ARE			
30~80L	±0.30	ANGLE	
10~30	±0.20	UNIT: mm	
5~10	±0.15	SCALE: 1:1	
~5	±0.10	DRAWING NO.	
APPROVALS		TITLE:	
NEW		GP01-1500WR-NP	
ECN NO.	REV.	DATE.	DESCRIPTION.
	A		

**GEPU 歌普**