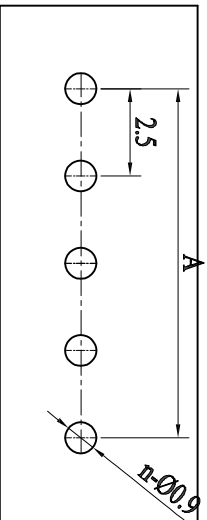
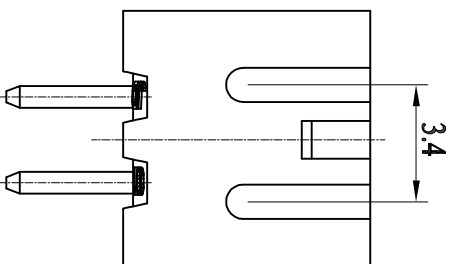
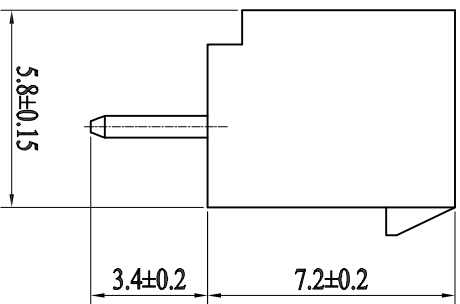
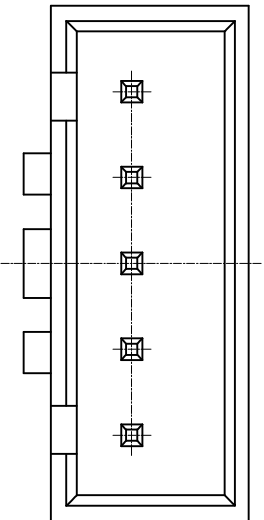
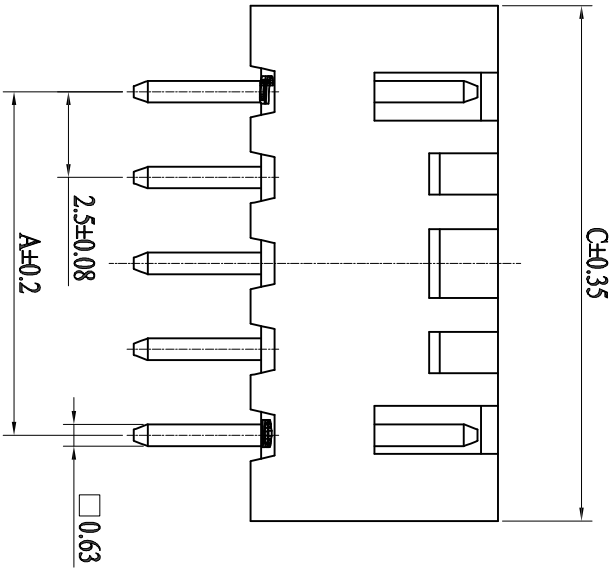


■ 技术参数 (SPECIFICATIONS)

- ◆ 额定电压: 250V AC/DC
- ◆ Voltage rating: 250V AC/DC
- ◆ 额定电流: 3.0A AC/DC MAX
- ◆ Current rating: 3.0A AC/DC MAX
- ◆ 耐压值: 1000V AC/minute
- ◆ Withstand voltage: 1000V AC/minute
- ◆ 绝缘电阻: 1000MΩ MIN
- ◆ Insulation resistance: 1000MΩ MIN
- ◆ 接触电阻: 0.02Ω MAX
- ◆ Contact resistance: 0.02Ω MAX
- ◆ 工作温度: -25°C ~ +85°C
- ◆ Working Temperature: -25°C ~ +85°C
- ◆ 间距: 2.5 mm
- ◆ Pitch: 2.5 mm

■ 材料 (MATERIAL)

- ◆ 外壳: 尼龙66
- ◆ Housing: PA66
- ◆ 插针: 黄铜
- ◆ Pin: Brass



POLES	PART NO	DIMENSIONS(mm)	
		A	B
2	2	2.5	7.5
3	3	5.0	10.0
4	4	7.5	12.5
5	5	10.0	15.0
6	6	12.5	17.5
7	7	15.0	20.0
8	8	17.5	22.5
9	9	20.0	25.0
10	10	22.5	27.5
11	11	25.0	30.0
12	12	27.5	32.5
13	13	30.0	35.0
14	14	32.5	37.5
15	15	35.0	40.0
16	16	37.5	42.5

PCB LAYOUT

APPROVALS		DATE	TITLE:	
DRAWN	ZHIWEI, CHEN	2015.07.07	GP01-2503W-NP	
CHECKED				
APPROVALS			PART NO.	
TOLERANCES ARE			UNIT: mm	SCALE: 1:1
30~0.1	±0.30	ANGLE	PROJ.	
10~0.30	±0.20		SHEET 1 OF 1	
5~10	±0.15			
~5	±0.10	±2'		
ECN NO.	REV.	DATE.	DESCRIPTION.	
	A		NEW	

GEPU 歌普