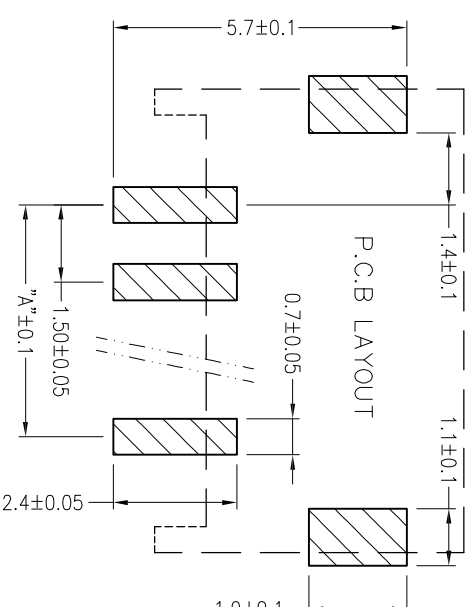
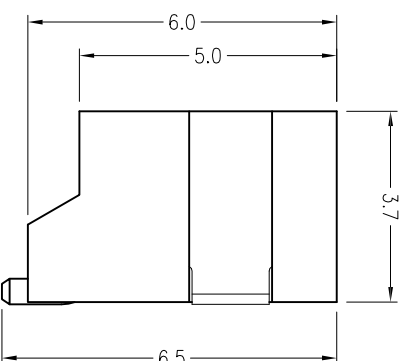
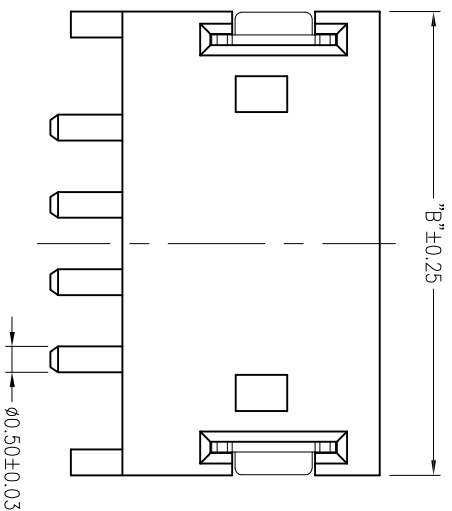
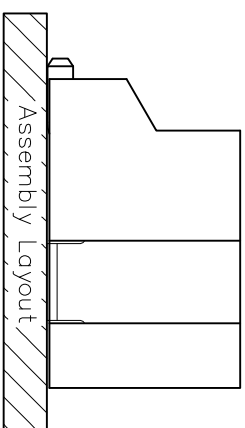
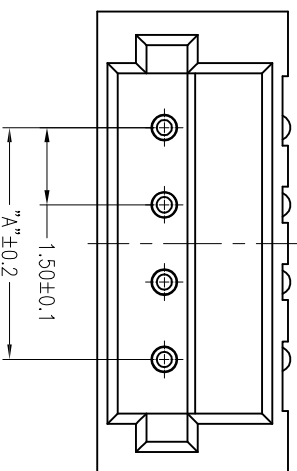


Poles	DIM. A	DIM. B
2	1.5	6.0
3	3.0	7.5
4	4.5	9.0
5	6.0	10.5
6	7.5	12.0
7	9.0	13.5
8	10.5	15.0
9	12.0	16.5
10	13.5	18.0
11	15.0	19.5
12	16.5	21.0
13	18.0	22.5
14	19.5	24.0
15	21.0	25.5
16	22.5	27.0



■ 技术参数 SPECIFICATIONS

- ◆ 适用线规: AWG#32~#26
- ◆ Applicable Wire: AWG#32~#26
- ◆ 额定电压: 50V DC, AC(rms)
- ◆ Rated voltage: 50V DC, AC(rms)
- ◆ 额定电流: 1A (AWG #26)
- ◆ Rated Current: 1A (AWG #26)
- ◆ 耐压值: 500V AC/minute
- ◆ Withstand voltage: 500V AC/min.
- ◆ 工作温度: -25°C ~ +85°C
- ◆ Working Temp: -25°C ~ +85°C
- ◆ 绝缘电阻: $\geq 500 \text{ M}\Omega$
- ◆ Insulation resistance: $\geq 500 \text{ M}\Omega$
- ◆ 接触电阻: $\leq 20 \text{ m}\Omega$
- ◆ Contact resistance: $\leq 20 \text{ m}\Omega$

■ 材料 MATERIAL

- ◆ 绝缘体: 尼龙9T, UL94-V0
- ◆ Insulator: Nylon9T, UL94-V0
- ◆ 接触针: 黄铜
- ◆ Contact PIN: Brass
- ◆ 焊片: 磷铜
- ◆ Solder tab: Phosphor bronze

APPROVALS		DATE	TITLE:			
DRAWN	ZHIWEI, CHEN	2015.07.07	GP01-1500WR-S-NP			
CHECKED						
APPROVALS			PART NO.			
TOLERANCES ARE		30~0.15 10~0.30 5~0.10 ~5	±0.30 ±0.20 ±0.15 ±0.10	ANGLE	±2°	
ECN NO.	REV.	DATE.	DESCRIPTION.	CHANGE.	CHECK.	APPRO.
	A		NEW			

GEPU 歌普