

REV	ECO	DESCRIPTION	DRFT	CHKD

NOTES:

ELECTRICAL:

- | | |
|--------------------------|-------------------------------|
| 1. VOLTAGE RATING | : 125 VAC RMS. |
| 2. CURRENT RATING | : 1.5 AMP. |
| 3. CONTACT RESISTANCE | : 30 MILLIOHMS MAX. |
| 4. INSULATION RESISTANCE | : 500 MEGOHMS MIN @ 500V DC . |
| 5. DIELECTRIC STRENGTH | : 1000V AC RMS 50Hz. 1MIN. |

MECHANICAL:

- | | |
|-----------------------------|-----------------------------------|
| 1. HOUSING MATERIAL | : GLASS FILLED POLYESTER UL94V-0. |
| 2. CONTACT MATERIAL | : PHOSPHOR BRONZE ϕ 0.46mm. |
| 3. PLATING | : GOLD PLATING OVER NICKEL. |
| 4. OPERATING | : 750 CYCLES MIN. |
| 5. PCB RETENTION PRE-SOLDER | : 1 LB MIN. |

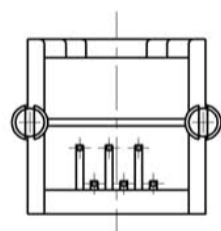
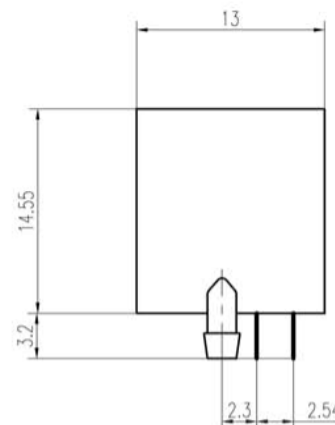
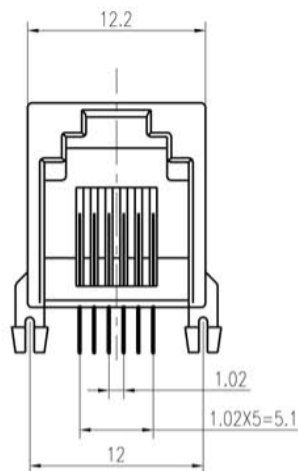
ENVIRONMENTAL:

- Temperature Range : $-45^{\circ}\text{C} \sim +85^{\circ}\text{C}$
- Relative Humidity : $90 \sim 95\%$ ($40 \pm 2^{\circ}\text{C}$)

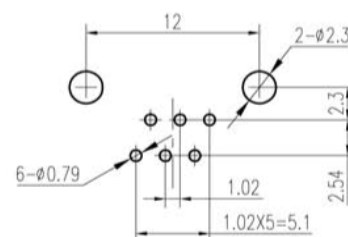
PART NUMBER:

DY 124 -

3u" 6u" 15u" 30u" 50u" PD20u"
 B (Black color) G (Gray color)
 6P2C 6P4C 6P6C
 Part No.



PCB LAYOUT



DETACHED LISTS	mm (inch)		DFTO:	DATE:	深圳市金航标电子有限公司		
	Tolerance Except as Noted		CHKD:	DATE:	WWW.BDS666.COM		
	0 \pm 0.2	\pm	MFO:	DATE:	型号: KH-PCB-6P6C		
	00 \pm 0.15	\pm	APPVL:	DATE:	0755-83044319		
	000 \pm 0.075	\pm	MATERIAL:		DRAWING NO.		SIZE
	ANGLES \pm 0.5		QTY:		/PART NO.		REV
			FINISH:		DO NOT SCALE DRAWING		06/05/02
	SCALE: 2:1		SCALE:		SHEET		0
					OF		