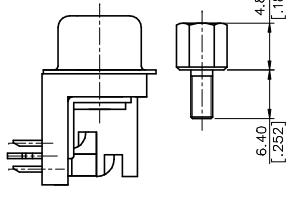
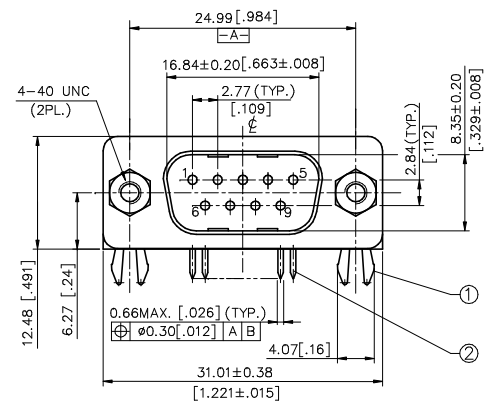


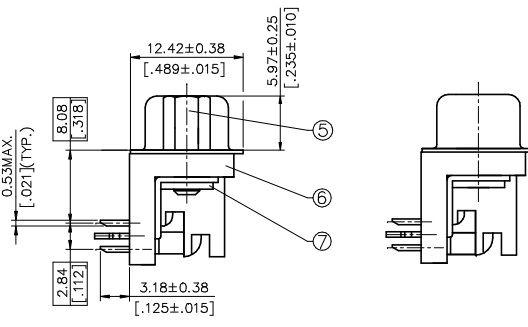
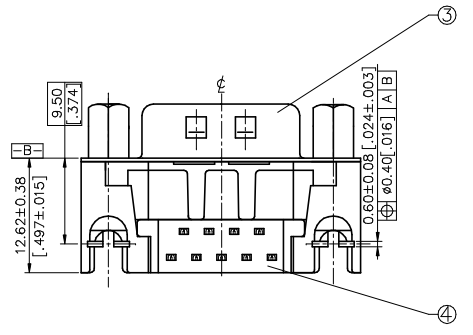
REV.	ECN. NO.	APPD
A	BC-10-0046609	Corel
B	BC-11-0000626	Corel
C	BC-11-0076124	Corel
D	BC-12-0009968	Adward

NOTES:

- HOOK ACCEPT P.C.B. THICKNESS 1.57 ± 0.08 [0.062 ± 0.003]
- SPECIFICATION:
 - ELECTRICAL CHARACTERISTICS:
 - CONTACT CURRENT RATING: 2 AMPERES .
 - CONTACT RESISTANCE: 30 milliohms(MAX.).
 - INSULATION RESISTANCE: 5000 Megohms (MIN).
 - DIELECTRIC WITHSTANDING VOLTAGE: 500 VAC (MIN). AT SEA LEVEL.
 - MECHANICAL CHARACTERISTICS
 - CONNECTOR MATING FORCE: 3.06Kgf MAX.
 - CONNECTOR UNMATING FORCE: 0.20 Kgf MIN.
 - OPERATING TEMPERATURE: -20 °C TO +85 °C
 - DURABILITY: 500 CYCLES.
- "RoHS" COMPLIANT.

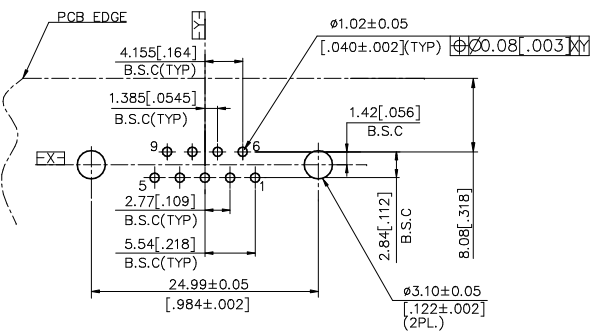


TYPE: III

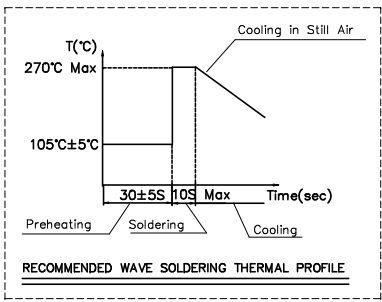
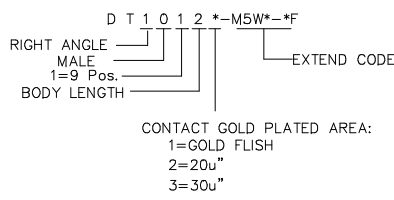


TYPE: I

TYPE: II



LAYOUT(Component Side View)



PART NO.	TYPE	NOTES		
DT1012*-M5W2-PF	TYPE III	F.S.L UNLOCKED ON THE PRODUCT,BUT PACKED TOGETHER		
DT1012*-M5W2-4F	TYPE II	THE PRODUCT WITHOUT F.S.L		
DT1012*-M5W3-4F	TYPE I	F.S.L LOCKED WITH PRODUCT		
ITEM	DESC.	Q'TY	MATERIAL	TREATMENT
7	CLINCH NUT	2	ZINC ALLOY	ZINC PLATED
6	HOUSING	1	THERMOPLASTIC UL 94V-0	MOLDED TEAL 322C
5	FEMALE SCREW LOCK	2	METAL	NICKEL PLATED
4	SPACER	1	THERMOPLASTIC UL 94V-0	MOLDED TEAL 322C
3	SHELL	1	STEEL	TIN PLATED
2	CONTACT	9	COPPER ALLOY	GOLD FLASH PLATING AT CONTACT AREA, TIN ALLOY (LEAD FREE)PLATED AT TAIL NICKEL OVERALL UNDER PLATED.
1	BOARD LOCK	2	STEEL	TIN PLATED
X. ±	X°. ± 5°	UNITS mm [INCH]	NAME (INTENDED USE)	
.X ±	.X°. ±	MAT'L	CUSTOMER	
.XX ± [0.10]	.XX°. ±	N/A	PART NO.(INTENDED USE)	TITLE: DYNASTY "D" MALE P/M R/A .318
.XXX ±	.XXX°. ±	FINISH	APPD: Dean Zhang 02/13'12	DWG NO.: 301-0000-2197
		Q'TY	CHKD: Radar Sun 02/13'12	SCALE SHEET REV.
		N/A	DR: D.J Zheng 02/13'12	1:1 1/1 D

THESE DRAWINGS AND SPECIFICATIONS ARE THE PROPERTY OF HON HAI PRECISION IND. CO., LTD. AND SHALL NOT BE REPRODUCED, COPIED OR USED IN ANY MANNER WITHOUT THE PRIOR WRITTEN CONSENT OF HON HAI PRECISION IND. CO., LTD.