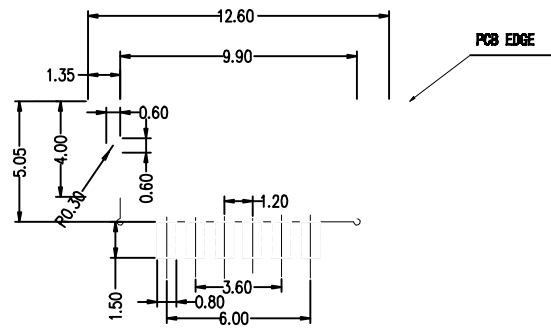
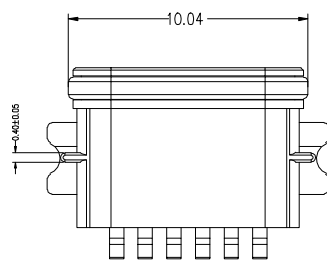
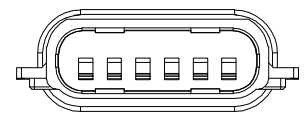
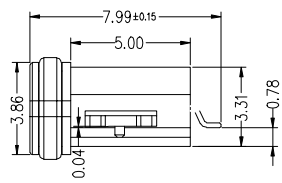
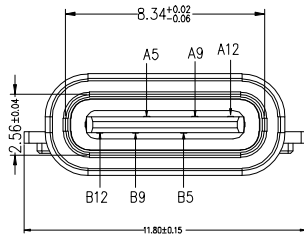
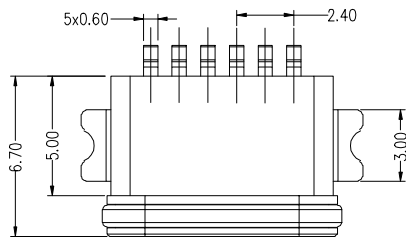


7	8	9	10
MAPX	MODIFICATION		DATE



PCB LAYOUT 图仅供参考

Note:  
 1.Material:  
 1.1 Housing: LCP  
 1.2 Contact: C5191,t=0.20mm  
 1.3 Shell: Zinc Alloy.  
 2.ELECTRICAL:  
 2-1:CURUENT RATAING:  
 VBUS AND GND CONTACTS RATED AT 1.25A  
 PARALLELED FOR A TOTAL OF 5A;  
 2-2:INITIAL CONTACT RESISTANCE :40 MEGOHMS  
 2-3:DIELECTRIC WITHSTANDING VOLTAGE:  
 100V AC MIN;  
 3:MECHANICAL CHARACTERISTICS:  
 3-1: MATING FORCE: 5~20N  
 3-2:UNMATING FORCE: 8~20N(INITIAL),  
 6~20N(AFTER 10000 CYCLES)  
 3-3:FREQUENCE: 200±50 CYCLES /HOUR,10000 CYCLES  
 3-4: OPERATING TEMPERATURE ; -40~80°  
 4: WATERPROOF: IP-X7.

TABLE B

PIN	SIGNAL NAME	PIN	SIGNAL NAME
A5	CC1	B12	GND
A9	VBUS	B9	VBUS
A12	GND	B5	CC2

产品图 PRODUCT CHART DWG		深圳市精拓金电子有限公司							
公差一览表 TOLERANCE UNLESS OTHERWISE		单位 UNITS	MM	制图 DRAWING	YANG	制图料号 PRODUCT PART NO.	918-416K2028840080		
.X	±0.30 X	±5.°	比例 SCALE	1:1	审核 CHKD	郭志富	产品名称 PRODUCT NO.	TYPE-C3.150MM.820水母型6.7P插板板 端子间距/间距/间距	
.XX	±0.15 .XX	±1.°	日期 DATE	2019.11.23	核准 APPD	黄国荣	角法 VIEW	版本 VER	A0
.XXX	±0.10 .XXX	±0.5'							