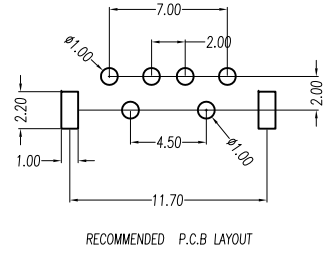
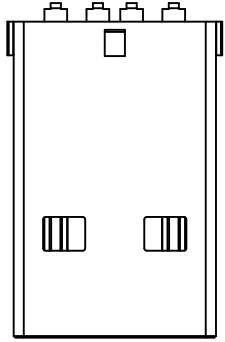


MAPX	MODIFICATION	DATE



规格型号: Specifications:

电气特性: Electrical:

- 额定电流: Current Rating  
1.5A/contact terminal
- 额定电压: Voltage Rating  
30V DC
- 接触电阻: Contact Resistance  
30 milliohms MAX
- 耐压: Dielectric Withstanding Voltage:  
500 V AC AT Sea Level
- 绝缘电阻: Insulation Resistance:  
1000MEGA ohms MIN

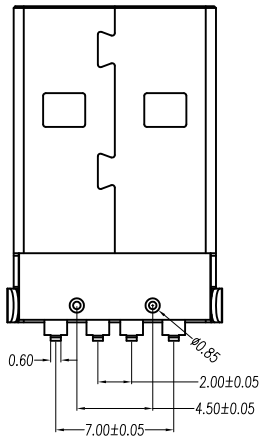
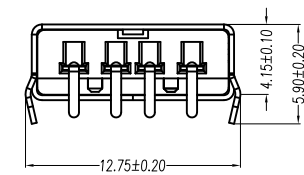
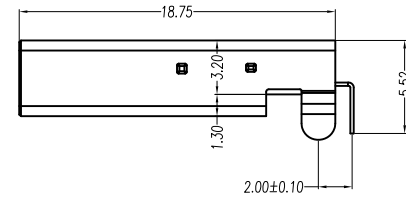
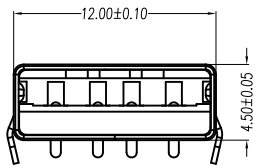
物理性能: Mechanical:

- 插拔力: Connector Mate and Unmate Force  
Mate force: 3.57kgf(MAX)  
Unmate force: 1.02kgf(MIN)
- 端子保持力: Terminal Retention  
1.0kgf(MIN)

原材料: Material:

- 塑膠: Housing:  
Hing Temperature Ternmaplastics,  
PBT\LCP White/Black
- 端子: Contact: Copper Alloy C2680
- 外圍: Shell: Copper Alloy C2680/SPCC

- 端子: Contact: Plated Gold in Mating Area;  
Tin On Solder Tails
- 端子四角鍍50U”(MIN)鍍,鍍金区域鍍100-200U”鍍金1U”  
鍍金四角鍍80U”(MIN)鍍  
Nickel Plating



产品图 PRODUCT CHART DWG			
公差一览表 TOLERANCE UNLESS OTHERWISE			
X.	±0.30	X.	±5.°
.X	±0.25	.X	±2.°
.XX	±0.15	.XX	±1.°
.XXX	±0.10	.XXX	±0.5°

# 深圳市精拓金电子有限公司

单位 UNITS	MM	制图 DRAWING	尹先华	制图料号 PRODUCT PART NO.	917-181A101ED60200
比例 SCALE	1:1	审核 CHKD	郭治富	产品名称 PRODUCT NO.	AM90度弯脚铁壳带柱白胶24H
日期 DATE	2021-04-15	核准 APPD	黄国荣	角法 VIEW	版本 VER
					AO