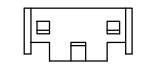
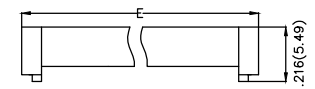
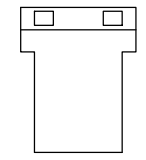
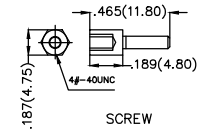
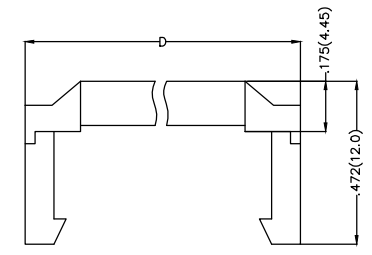
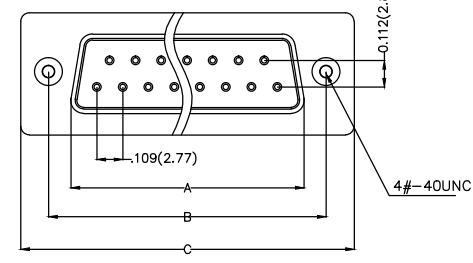
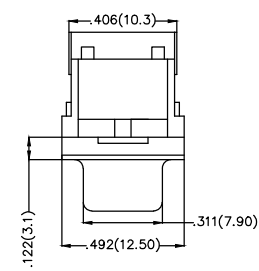
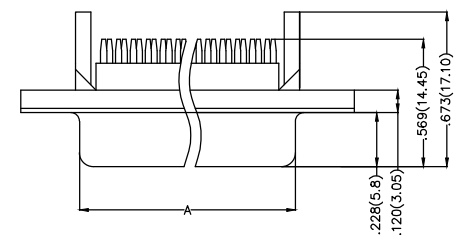


REV	LOCATIONS	DESCRIPTION	DATE	REVISER	APPD



Pin	Dimensions(in./mm)				
	A	B	C	D	E
9	0.643(16.33)	0.984(25.00)	1.216(30.80)	0.727(18.42)	0.591(15.01)
15	0.971(24.66)	1.311(33.31)	1.540(39.11)	1.029(26.14)	0.918(23.32)
25	1.511(38.38)	1.852(47.04)	2.088(53.04)	1.588(40.34)	1.475(37.47)
37	2.158(54.80)	2.500(63.50)	2.738(69.55)	2.226(56.54)	2.105(53.47)



### Ordering Information

FDB B 02 - XX F0 S X XX XX K  
 1 2 3 4 5 6 7 8 9 10

### SPECIFICATIONS

#### Electrical

- Current Rating: 3A AC(rms)/DC
- Voltage Rating: 250V AC(rms)/DC
- Contact Resistance: 25 mΩ Max
- Insulation Resistance: 1000 MΩ MIN
- Withstanding Voltage: 500V AC r.m.s
- Temperature Range—Operating: -55°C~+105°C

#### Material and Finish

- Housing: PBT UL 94V-0
- Contact: Copper Alloy/Gold Flash Plated On Contact Area Tin Plated On Solder tails, Nickel Under Plated Over All/Gold Plated Options
- Shell: Spcc/Nickel Plated Over All
- Screws: Copper Alloy/Nickel Plated Over All

1	Series Name FDB- D-SUB	2	Assembly Layout B-Bump	3	Distinction No. 02	4	No. of pins 09-37	5	Type Female-F0
6	Entry Type S-Straight	7	Plating 3-Half Gold/Tin	8	Thickness of Plating Gold Plating-00 3u"-03..... Custom Plate Available	9	Plastic Colour K6-Black U1-Blue	10	Packaging K-PE Tray

 <b>THIRD ANGLE PROJECTION</b>	GENERAL TOLERANCES (UNLESS SPECIFIED)		APPROVE BY FRANK	DATE 28/JUN/13	PART NO. FDBB02-XXF0SXXXXXX	ITEM NO. FDBB02	 <b>TXGA</b> Leader Of Industry	
	X.±.012(0.30)	X.'±5'	CHECKED BY JACOB	DATE 28/JUN/13	TITLE D-SUB FEMALE BUMP TYPE CONN			REV 0
	DESIGN UNITS Inch (metric)	X.X±.008(0.20)	X'±2'	DRAWN BY CHERRY	DATE 28/JUN/13	THIS DRAWING CONTAINS INFORMATION THAT IS PROPRIETARY TO TXGA INDUSTRIAL ELECTRONICS(S.Z)CO.,LTD AND SHOULD NOT BE USED WITHOUT WRITTEN PERMISSION		
	SCALE 5:1	SIZE A4	X.XX±.006(0.15)	X.X'±1'				