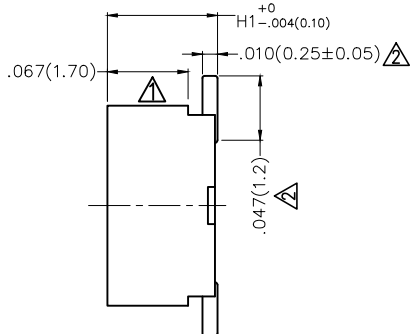
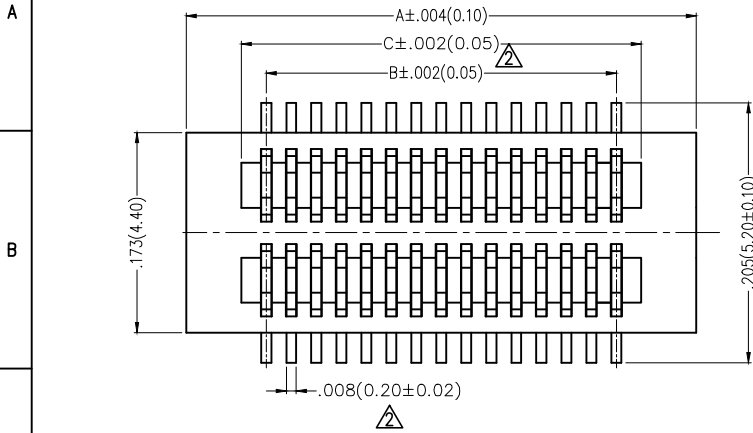
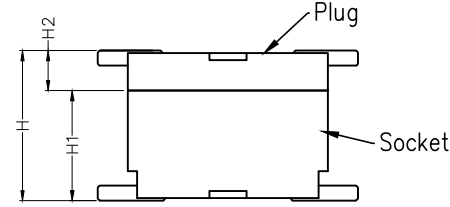
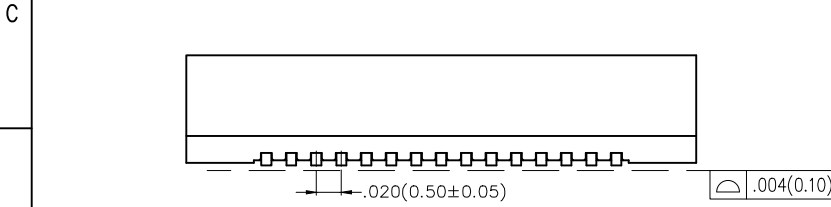


REV	LOCATIONS	DESCRIPTION	DATE	REVISER	APPD
1			12/JUN/17	JACOB	CHERRY
2		1. Size changes 2.Material-Resin change	12/MAY/21	KATE	CHERRY



Electrical
 Current Rating: 0.5A AC(rms)/DC
 Voltage Rating: 50V AC(rms)/DC
 Contact Resistance: 40 mΩ Max
 Insulation Resistance: 100 MΩ MIN
 Withstanding Voltage: 250V AC r.m.s
 Temperature Range-Operating: -25°C ~ +85°C

Material and Plating
 Housing: PA9T (UL 94V-0)
 Contact Pin: Phosphor Bronze
 Plating: Gold Plated



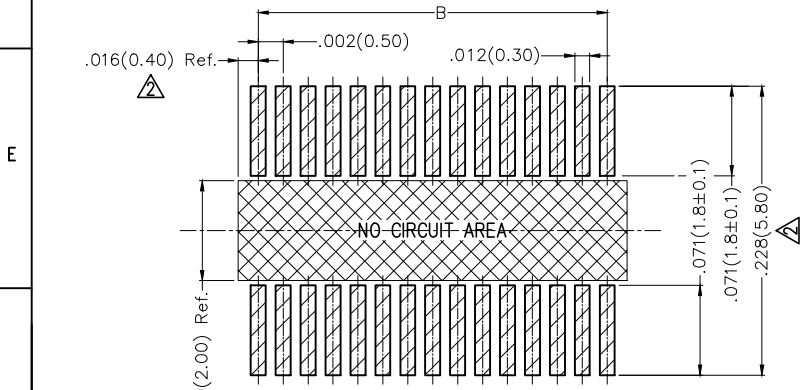
Height H(in/mm)	Female H1(in/mm)	Male H2(in/mm)
.118(3.00)	.087(2.20)	.031(0.80)
.138(3.50)	.087(2.20)	.051(1.30)
.157(4.00)	.118(3.00)	.039(1.00)
.177(4.50)	.138(3.50)	.039(1.00)
.197(5.00)	.157(4.00)	.039(1.00)
.217(5.50)	.177(4.50)	.039(1.00)
.236(6.00)	.157(4.00)	.079(2.00)
.256(6.50)	.177(4.50)	.079(2.00)

Mating Section

Ordering Information

FBB 050 03 - F XX S 1 XX 3 K6 M HXX
 1 2 3 4 5 6 7 8 9 10 11 12



1 Category FBB-Board To Board	2 Series Number 050-Pitch 0.5mm	3 Distinction No. 03	4 Type F-Female	5 Circuits XX	6 Entry Angle S-180° Vertical
7 Plating 1-Gold Plated	8 Thickness of Plating 00-Gold Flash 03-3μ"	9 Material-Resin 3-PA9T	10 Color-Resin K6-Black	11 Packaging M-Reel	12 Female Height H22-2.2mm H30-3.0mm



Recommended P.C.Board Layout
 General tolerances: ±.020(0.50)

THIRD ANGLE PROJECTION	GENERAL TOLERANCES (UNLESS SPECIFIED)		APPROVE BY FRANK	DATE 26/SEPT/13	PART NO. FBB05003-FXXS1XX3K6MHXX	TEM NO. FBB05003-F	 Leader Of Industry	
	DESIGN UNITS Inch (metric)	X.±.012(0.30) X.X±.008(0.20) X.XX±.006(0.15) X.XXX±.004(0.10)	X'.±5" .X'±2" .XX'±1" .XXX'±0.5"	CHECKED BY CHERRY	DATE 26/SEPT/13	TITLE Board to Board Pitch 0.5mm 180° Vertical (SMT)		REV 2
SCALE 5:1	SIZE A4	DRAWN BY JACOB		DATE 26/SEPT/13	THIS DRAWING CONTAINS INFORMATION THAT IS PROPRIETARY TO TXGA INDUSTRIAL ELECTRONICS(S.Z)CO.,LTD AND SHOULD NOT BE USED WITHOUT WRITTEN PERMISSION			

Circuits (n)	Part No.	Dimensions(in/mm)			Circuits (n)	Part No.	Dimensions(in/mm)		
		A	B	C \triangle			A	B	C \triangle
8	FBB05003-F08S1XX3K6MHXX	.185(4.70)	.059(1.50)	.101(2.56)	36	FBB05003-F36S1XX3K6MHXX	.461(11.70)	.335(8.50)	.376(9.56)
10	FBB05003-F10S1XX3K6MHXX	.205(5.20)	.079(2.00)	.120(3.06)	38	FBB05003-F38S1XX3K6MHXX	.480(12.20)	.354(9.00)	.396(10.06)
12	FBB05003-F12S1XX3K6MHXX	.224(5.70)	.098(2.50)	.140(3.56)	40	FBB05003-F40S1XX3K6MHXX	.500(12.70)	.374(9.50)	.416(10.56)
14	FBB05003-F14S1XX3K6MHXX	.244(6.20)	.118(3.00)	.160(4.06)	42	FBB05003-F42S1XX3K6MHXX	.520(13.20)	.394(10.00)	.435(11.06)
16	FBB05003-F16S1XX3K6MHXX	.264(6.70)	.138(3.50)	.180(4.56)	44	FBB05003-F44S1XX3K6MHXX	.539(13.70)	.413(10.50)	.455(11.56)
18	FBB05003-F18S1XX3K6MHXX	.283(7.20)	.157(4.00)	.199(5.06)	46	FBB05003-F46S1XX3K6MHXX	.559(14.20)	.433(11.00)	.475(12.06)
20	FBB05003-F20S1XX3K6MHXX	.303(7.70)	.177(4.50)	.219(5.56)	48	FBB05003-F48S1XX3K6MHXX	.579(14.70)	.453(11.50)	.494(12.56)
22	FBB05003-F22S1XX3K6MHXX	.323(8.20)	.197(5.00)	.239(6.06)	50	FBB05003-F50S1XX3K6MHXX	.598(15.20)	.472(12.00)	.514(13.06)
24	FBB05003-F24S1XX3K6MHXX	.343(8.70)	.217(5.50)	.258(6.56)	60	FBB05003-F60S1XX3K6MHXX	.697(17.70)	.571(14.50)	.613(15.56)
26	FBB05003-F26S1XX3K6MHXX	.362(9.20)	.236(6.00)	.278(7.06)	70	FBB05003-F70S1XX3K6MHXX	.795(20.20)	.669(17.00)	.711(18.06)
28	FBB05003-F28S1XX3K6MHXX	.382(9.70)	.256(6.50)	.298(7.56)	80	FBB05003-F80S1XX3K6MHXX	.894(22.70)	.768(19.50)	.809(20.56)
30	FBB05003-F30S1XX3K6MHXX	.402(10.20)	.276(7.00)	.317(8.06)	90	FBB05003-F90S1XX3K6MHXX	.992(25.20)	.866(22.00)	.908(23.06)
32	FBB05003-F32S1XX3K6MHXX	.421(10.70)	.295(7.50)	.337(8.56)	100	FBB05003-F100S1XX3K6MHXX	1.091(27.70)	.965(24.50)	1.006(25.56)
34	FBB05003-F34S1XX3K6MHXX	.441(11.20)	.315(8.00)	.357(9.06)					

 THIRD ANGLE PROJECTION	GENERAL TOLERANCES (UNLESS SPECIFIED)		APPROVE BY FRANK	DATE 26/SEPT/13	PART NO. FBB05003-FXXS1XX3K6MHXX	TEM NO. FBB05003-F	 Leader Of Industry	
	X.±.012(0.30)	X.±5'	CHECKED BY CHERRY	DATE 26/SEPT/13	TITLE Board to Board Pitch 0.5mm 180° Vertical (SMT)			REV 2
	DESIGN UNITS Inch (metric)	X.X±.008(0.20)	.X'±2'	DRAWN BY JACOB	DATE 26/SEPT/13	THIS DRAWING CONTAINS INFORMATION THAT IS PROPRIETARY TO TXGA INDUSTRIAL ELECTRONICS(S.Z)CO.,LTD AND SHOULD NOT BE USED WITHOUT WRITTEN PERMISSION		
	SCALE 5:1	SIZE A4	X.XX±.006(0.15)	.XX'±1'	X.XXX±.004(0.10)	.XXX'±0.5'		