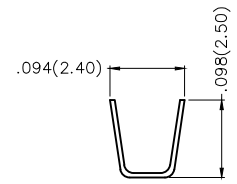
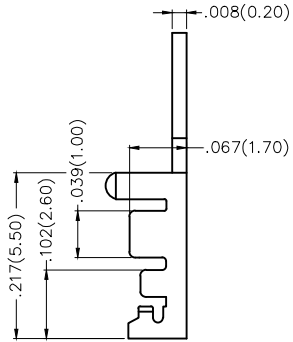
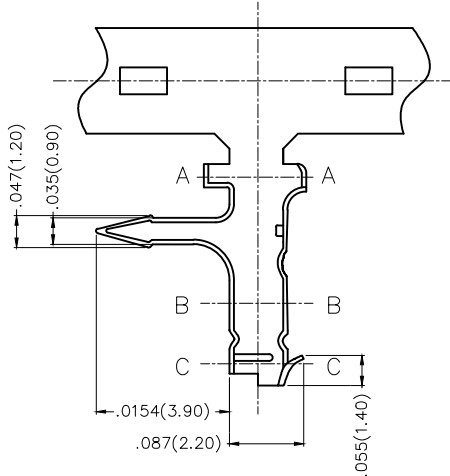
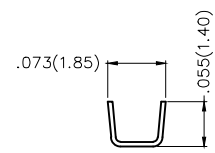


REV	LOCATIONS	DESCRIPTION	DATE	REVISER	APPD

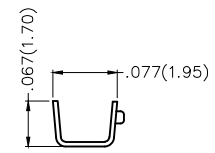
Electrical
Material: Phosphor Bronze
Plating: Tin-Plated
Wire Range: 28AWG~24AWG
Applicable Housing: FHG25008 Series
Minimum Order Quantity : 11,000 PCS



SEC A-A



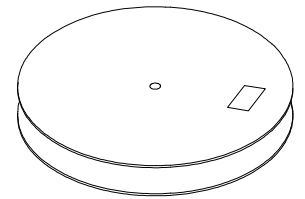
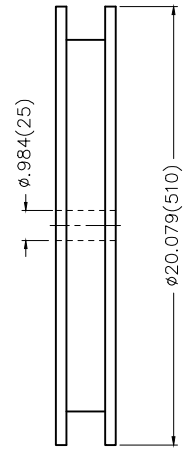
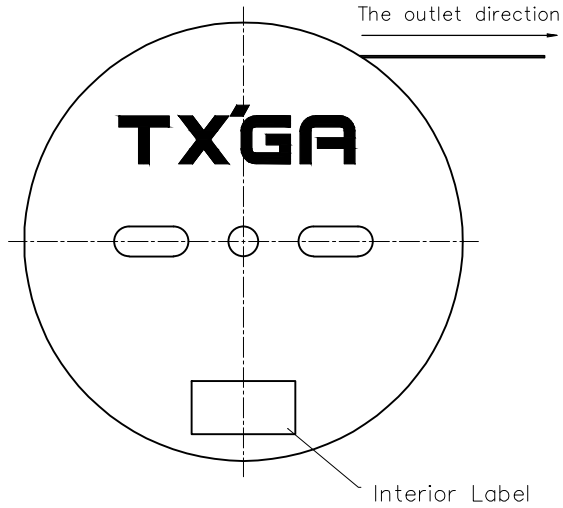
SEC B-B



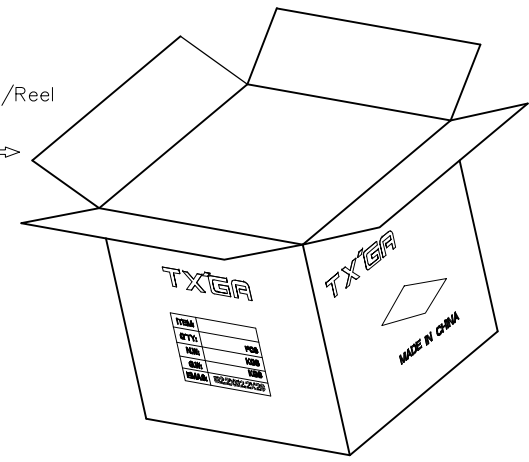
SEC C-C

 THIRD ANGLE PROJECTION	GENERAL TOLERANCES (UNLESS SPECIFIED)		APPROVE BY FRANK	DATE 11/JUL/13	PART NO. FT25007-M2H	ITEM NO. FT25007	 Leader Of Industry	
	DESIGN UNITS Inch (metric)	X.±.012(0.30) X.X±.008(0.20)	X.±5° .X±2°	CHECKED BY FAN	DATE 11/JUL/13	TITLE Wire to Board Pitch 2.50mm(Terminal)		REV 0
SCALE 5:1	SIZE A4	X.XX±.006(0.15) X.XXX±.004(0.10)	.XX±1° .XXX±0.5°	DRAWN BY CHERRY	DATE 11/JUL/13	THIS DRAWING CONTAINS INFORMATION THAT IS PROPRIETARY TO TXGA INDUSTRIAL ELECTRONICS(S.Z)CO.,LTD AND SHOULD NOT BE USED WITHOUT WRITTEN PERMISSION		

REV	LOCATIONS	DESCRIPTION	DATE	REVISER	APPD



11,000 Pcs/Reel



 THIRD ANGLE PROJECTION	GENERAL TOLERANCES (UNLESS SPECIFIED)		APPROVE BY FRANK	DATE 11/JUL/13	PART NO. FT25007-M2H	ITEM NO. FT25007	 Leader Of Industry	
	DESIGN UNITS Inch (metric)	X.X±.012(0.30)	.X'±5'	CHECKED BY FAN	DATE 11/JUL/13	TITLE Wire to Board Pitch 2.50mm(Terminal)		REV 0
SCALE 5:1	SIZE A4	X.XX±.006(0.15)	.XX±1"	DRAWN BY CHERRY	DATE 11/JUL/13	THIS DRAWING CONTAINS INFORMATION THAT IS PROPRIETARY TO TXGA INDUSTRIAL ELECTRONICS(S.Z)CO.,LTD AND SHOULD NOT BE USED WITHOUT WRITTEN PERMISSION		