

REV	LOCATIONS	DESCRIPTION	DATE	REVISER	APPD

SPECIFICATIONS

Electrical

Current Rating:1.0A AC(rms)/DC

Contact Resistance: 20 mΩ Max

Insulation Resistance: 500 MΩ Min

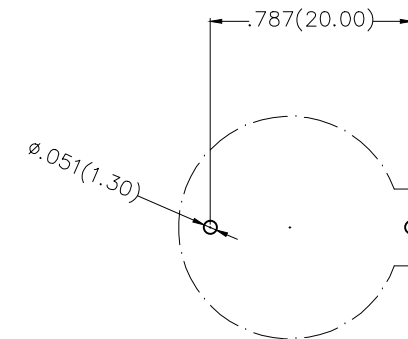
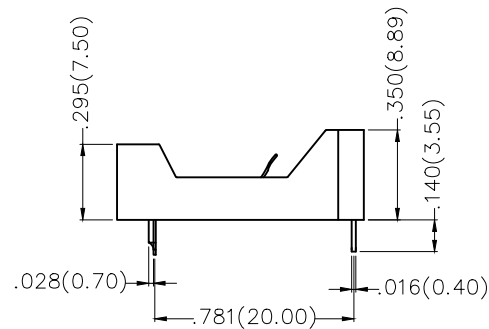
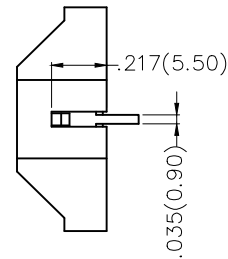
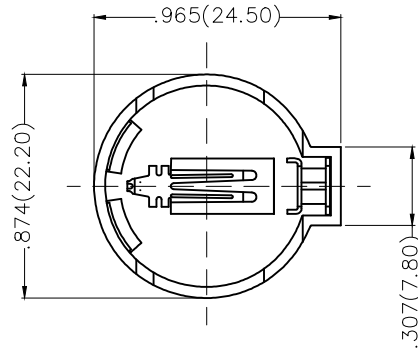
Withstanding Voltage: 500V AC r.m.s

Temperature Range—Operating: −40°C~+85°C

Material and Plating

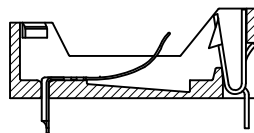
Housing: PBT (UL 94V-0), Black



Pin: Brass/ Tin Plated



Recommended P.C.Board Layout

General Tolerances: ±0.05mm



 THIRD ANGLE PROJECTION		GENERAL TOLERANCES (UNLESS SPECIFIED)		APPROVE BY FRANK	DATE 11/SEP/13	PART NO. FBA25014-S02B2004K	ITEM NO. FBA25014	 Leader Of Industry	
		X.±.012(0.30)	X.'±5'	CHECKED BY CHERRY	DATE 11/SEP/13	TITLE Battery Connector 180° Vertical(DIP)			
DESIGN UNITS Inch (metric)		X.X±.008(0.20)	X.'±2'	DRAWN BY JACOB	DATE 11/SEP/13	THIS DRAWING CONTAINS INFORMATION THAT IS PROPRIETARY TO TXGA INDUSTRIAL ELECTRONICS(S.Z)CO.,LTD AND SHOULD NOT BE USED WITHOUT WRITTEN PERMISSION		REV 0	SHEET NO. 1/1
SCALE 5:1	SIZE A4	X.XX±.006(0.15)	.XX'±1'						
		X.XXX±.004(0.10)	.XXX'±0.5'						