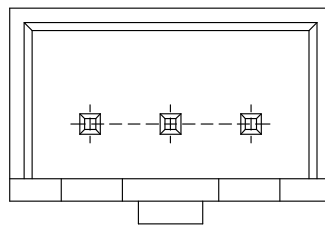
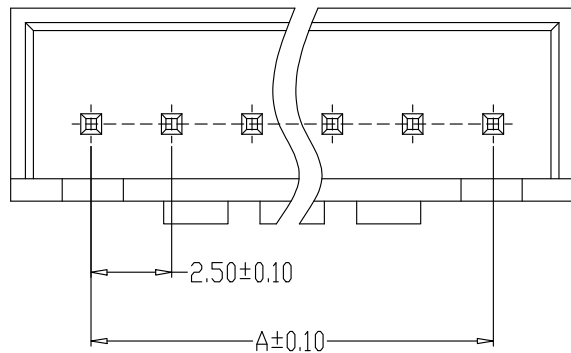
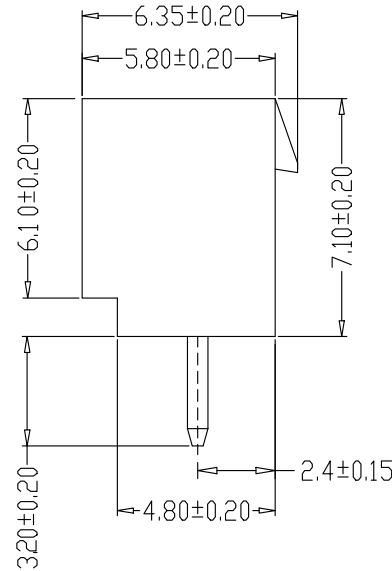
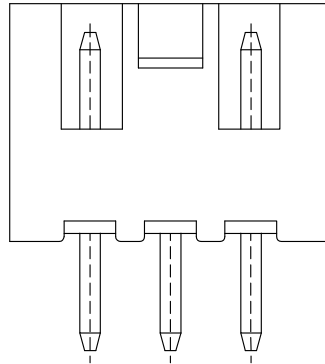
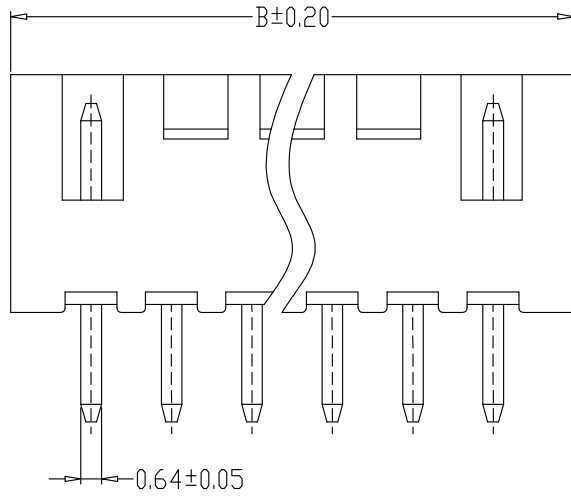
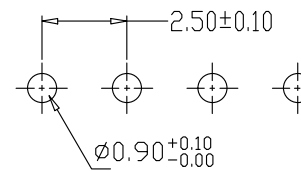


**SPECIFICATIONS**

- 1、Current Rating: 3A AC, DC
- 2、Voltage Rating: 250V AC, DC
- 3、Temperatuer Range: -25°C~+85°C
- 4、Contact Resistance: 10mΩ Max
- 5、Insulation Resistance: 1000MΩ Min
- 6、Withstanding Voltang: 1000V AC/minute
- 7、Material: Wafer Nylon66, UL94V-0  
PIN Brass Tin-plated



2-6A



PCB LAYOUT

编号	尺寸 (mm)	
	A	B
XHB- 2A	2.50	7.50
XHB- 3A	5.00	10.00
XHB- 4A	7.50	12.50
XHB- 5A	10.00	15.00
XHB- 6A	12.50	17.50
XHB- 7A	15.00	20.00
XHB- 8A	17.50	22.50
XHB- 9A	20.00	25.00
XHB-10A	22.50	27.50
XHB-11A	25.00	30.00
XHB-12A	27.50	32.50
XHB-13A	30.00	35.00
XHB-14A	32.50	37.50
XHB-15A	35.00	40.00
XHB-16A	37.50	42.50

GENRL TOLERANCE		制图	林月旺	料号	XHB-NA		版本	A
X.±0.25	X.*±2'	审核	李攀进	PART NO.	带扣直针座		页次	1/1
.X±0.20	.X*±1'			TITLE			SHEET	
.XX±0.15	.XX*±0.5'	核准	罗观彬	客户料号				
.XXX±0.10	.XXX*±0.5'			CUTM. NO.				
		单位	MM	比例	SCALE	1:1	富 港 电 子	